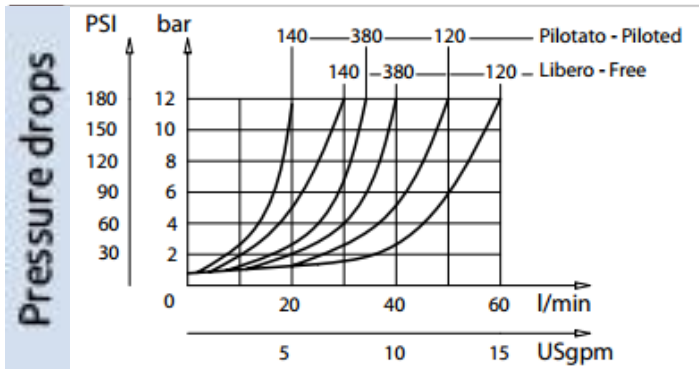
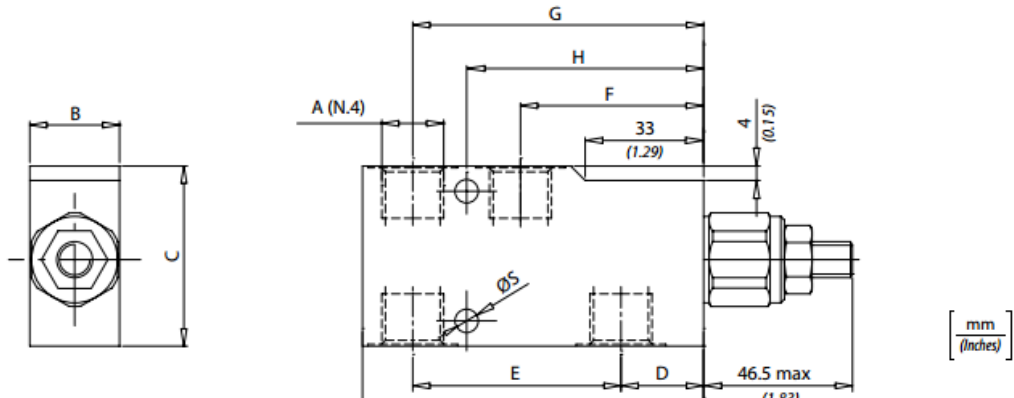
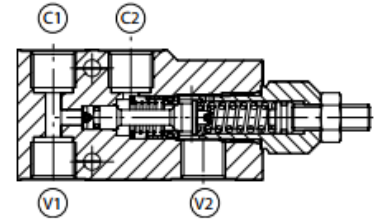




## VBCL Open Single Counter Balance Valve



Technical Data	
<b>Fluid viscosity</b>	10-500 mm <sup>2</sup> /s 45 to 2000 ssu (6 to 420 cSt)
<b>Filtration</b>	ISO code 16/13 SAE class 4 or better
<b>Fluid temperature</b>	0°C +80°C -4°F + 176°F
<b>Ambient temperature</b>	20°C +50°C -4°F +122°F



Technical Performances														
Code	A	L/Min	Max Pressure BAR/PSI	B	C	D	E	F	G	H	L	S	Approx Weight (kg)	Pilot Ratio
VBCL140	BSPP1/4	30 (8)	350 (5000)	25 (0.98)	50 (1.97)	23 (0.90)	58 (2.28)	51(2)	81 (3.19)	66 (2.60)	93 (3.74)	6.5 (0.26)	0.85	1:4.25
VBCL380	BSPP3/8	40 (10.5)												
VBCL120	BSPP1/2	60 (16)		30 (1.18)	60 (2.36)	21 (0.83)	63 (2.48)		84 (3.30)	67.5 (2.66)	100 (3.94)			