



# HYDRAULIC MEGASTORE

Serving the Hydraulics Industry Worldwide

## AIR BREATHER FILLER CAPS



The complete series of oil filter and breather filler caps makes it possible to meet all market demands.

Metal and plastic styles suitable for use on mobile equipment are available.

Filler caps perform a dual function, air filtration at the tank inlet and prefiltration of the fluid by means of the basket, in order to prevent the ingress of foreign material into the tank during filling and top-up operations.

Correct operation of breather filters makes for longer life of the filter cartridges installed in the hydraulic circuit, and in applications where high level of contamination are present.

### Temperature

- from -25°C to +100°C

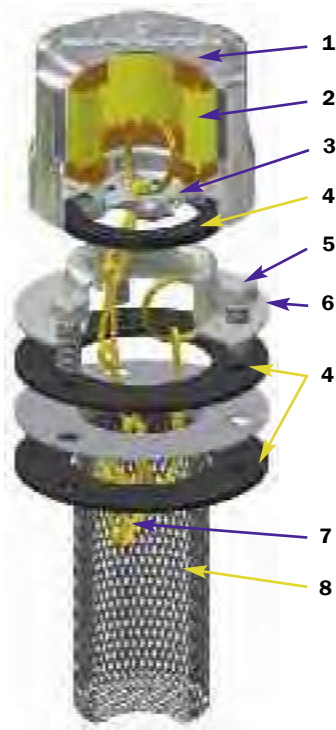
### Compatibility

- NBR seals and Cork Gasket, compatible with:  
Mineral oils to ISO 2943 - aqueous emulsions  
Synthetic fluids, glycol water.
- FPM seals, compatible with:  
Synthetic fluids type HS-HFDR-HFDS-HFDU

**Metal oil filler and air breather filler caps**

**Series TA 46**

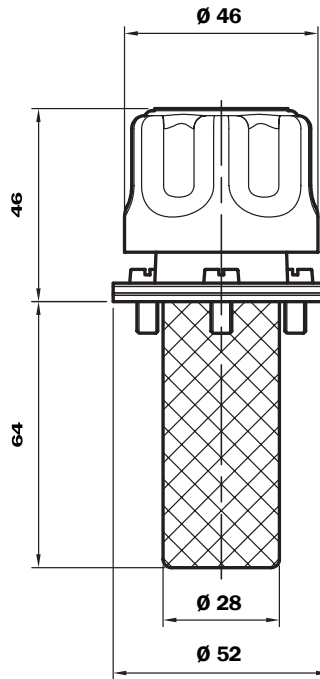
**Dimensions**



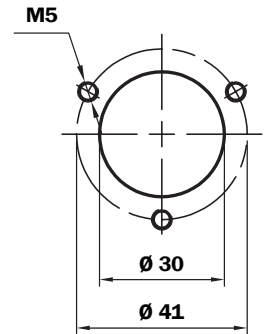
**TA46 B (Materials)**

- 1 - Cover: Chrome Plated Steel
- 2 - Filter element: Resin impregnated cellulose
- 3 - 6 - Flange: Galvanised Steel
- 4 - Seals: NBR  
Cork Gasket
- 5 - Screws: Galvanised Steel
- 7 - Chain, ring: Brass
- 8 - Basket: Galvanised Steel

**Bayonet connection**



**Reservoir holes**



**Flow rates with Δp: 0,02 bar**

Filtration	l/min
3 μm	150
10 μm	200

**Weight**

TA 46: 0,100 kg

**Ordering information**

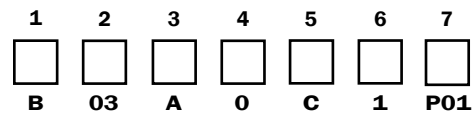
**TA 46 B**

Bayonet connection  
Non-removable strainer



**Filler cap  
TA46**

Example: TA46



**1 - Connection to reservoir**

**B** Flange with bayonet connection

**2 - Filter element**

**03** 3 μm  
**10** 10 μm

**3 - Seal**

**A** NBR  
**B** Cork gasket

**4 - Valves**

**0** Without valves

**5 - Variants**

**0** Standard  
**C** With chain

**6 - Basket**

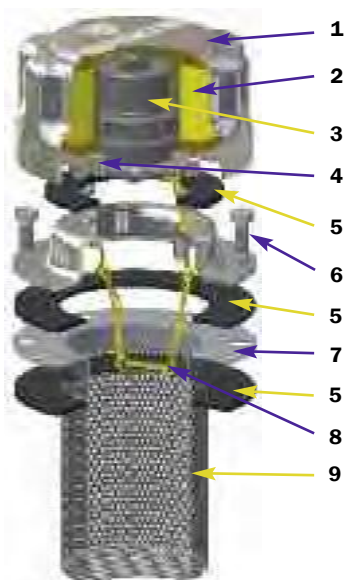
**0** Without  
**1** L= 65 mm

**7 - Options**

**P01** standard

# Series TA 80

## Metal oil filler and air breather filler caps



### TA80 B/D (Materials)

- 1 - Cover: Chrome Plated Steel
- 2 - Filter element: Resin impregnated cellulose
- 3 - Pressurisation valve: Bodies: Nylon  
End cap-disk: Galvanised Steel
- 4 - Flange and anti-splash feature: Galvanised Steel
- 5 - Seals: Cork Gasket  
NBR
- 6 - Screws: Galvanised Steel
- 7 - Flange: Galvanised Steel
- 8 - Chain, ring: Brass
- 9 - Basket TA80B: Galvanised Steel

### Flow rates with $\Delta p$ : 0,02 bar

Filtration	l/min
3 $\mu m$	450
10 $\mu m$	550

### Weight

Strainer L 80 mm:	0,330 Kg
Strainer L 150 mm:	0,350 Kg

### TA 80 B

Bayonet connection  
Non-removable basket



### TA 80 B

Bayonet connection  
With Padlock tab



### TA 80 D

Bayonet connection  
Removable basket



### TA80B00....P01

Bayonet connection  
Closed filler cap without  
filter element



### TA80B10....P01

Bayonet connection  
Filler cap with filter  
element



### TA80B03.9..P01

Bayonet connection  
Filler cap with anti-splash  
feature and filter element



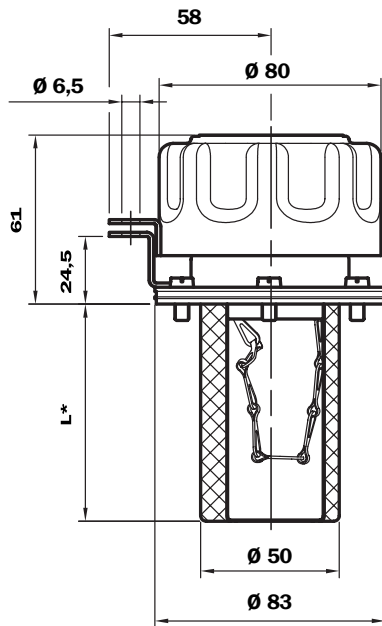
### TA80B10.1..P01

Bayonet connection  
Filler cap with  
pressurisation valve  
and filter element

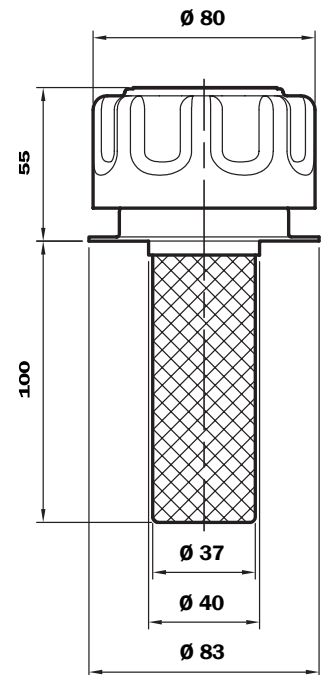


# Dimensions

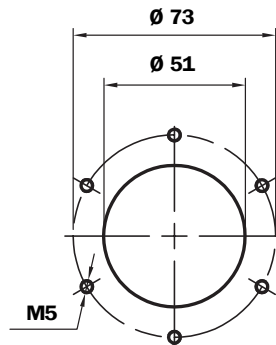
## Bayonet connection



## Weld flange



## Reservoir holes

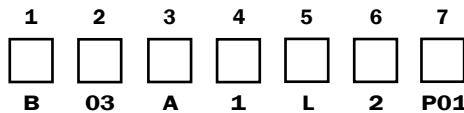


# Ordering information

### Filler cap

**TA80**

Example: TA80



### 1 - Connection to reservoir

- B** Flange with bayonet connection
- D** Weld flange

### 2 - Filter element

- 00** Without filter (Blank filler cap)
- 03** 3 µm
- 10** 10 µm

### 3 - Seal

- A** NBR
- B** Cork gasket

### 4 - Valves

- 0** Without
- 1** 0,3 bar pressurisation valve (only with seals NBR)
- 2** 0,7 bar pressurisation valve (only with seals NBR)
- 9** Anti-splash feature (only with filter element 3 µm)

### 5 - Variants

- 0** Standard
- L** With Padlock tab (B versions only)

### 6 - Basket

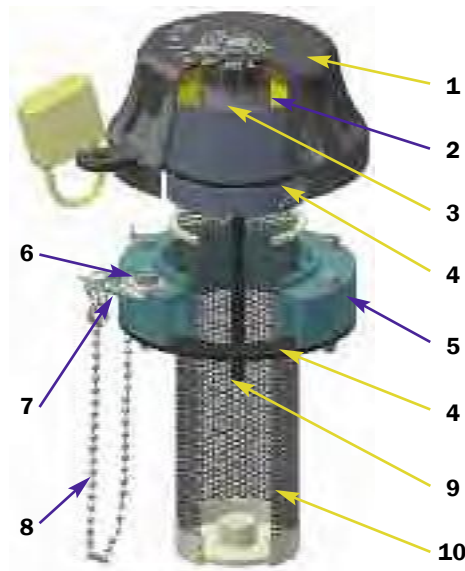
- 0** Without
- 1** \*L= 80 mm (B versions only)
- 2** \*L= 150 mm (B versions only)
- 3** \*L= 100 mm (D versions only)

### 7 - Options

- P01** standard

# Series TAP 90

## Nylon oil filler and air breather filler caps



### TAP90 (Materials)

- 1 - Cover/ringnut: Nylon
- 2 - Filter element: Resin impregnated cellulose  
Polyurethane
- 3 - Pressurisation valve: Nylon  
Galvanised Steel  
NBR
- 4 - Seal: NBR
- 5 - Flange B: Nylon
- 6 - Screws: Galvanised Steel
- 7 - Padlock tab: Galvanised Steel
- 8 - Chain, ring: Brass
- 9 - Dipstick: Phosphated Steel
- 10 - Basket: Galvanised Steel/Nylon

### Flow rate with $\Delta p$ : 0,02 bar

Filtration	l/min
3 $\mu$ m	450
10 $\mu$ m	550

### Weight

Basket L 120 mm:	0,250 Kg
Basket L 250 mm:	0,310 Kg

**TAP90 B.....**  
Flange with  
bayonet connection



External chain

**TAP90 R.....**  
Flange with  
M52x2 connection



Internal chain

**TAP90 F.....**  
Flange with spigot  
DIN 24557 Connection  
M52x2



Internal chain

**TAP90 C.....**  
Weld riser  
Connection M52x2



Weld riser in  
Galvanised Steel,  
internal chain

**TAP90 B-C-R-F**  
With dipstick



**TAP90 B-C-R-F**  
Closed filler cap without  
filter element



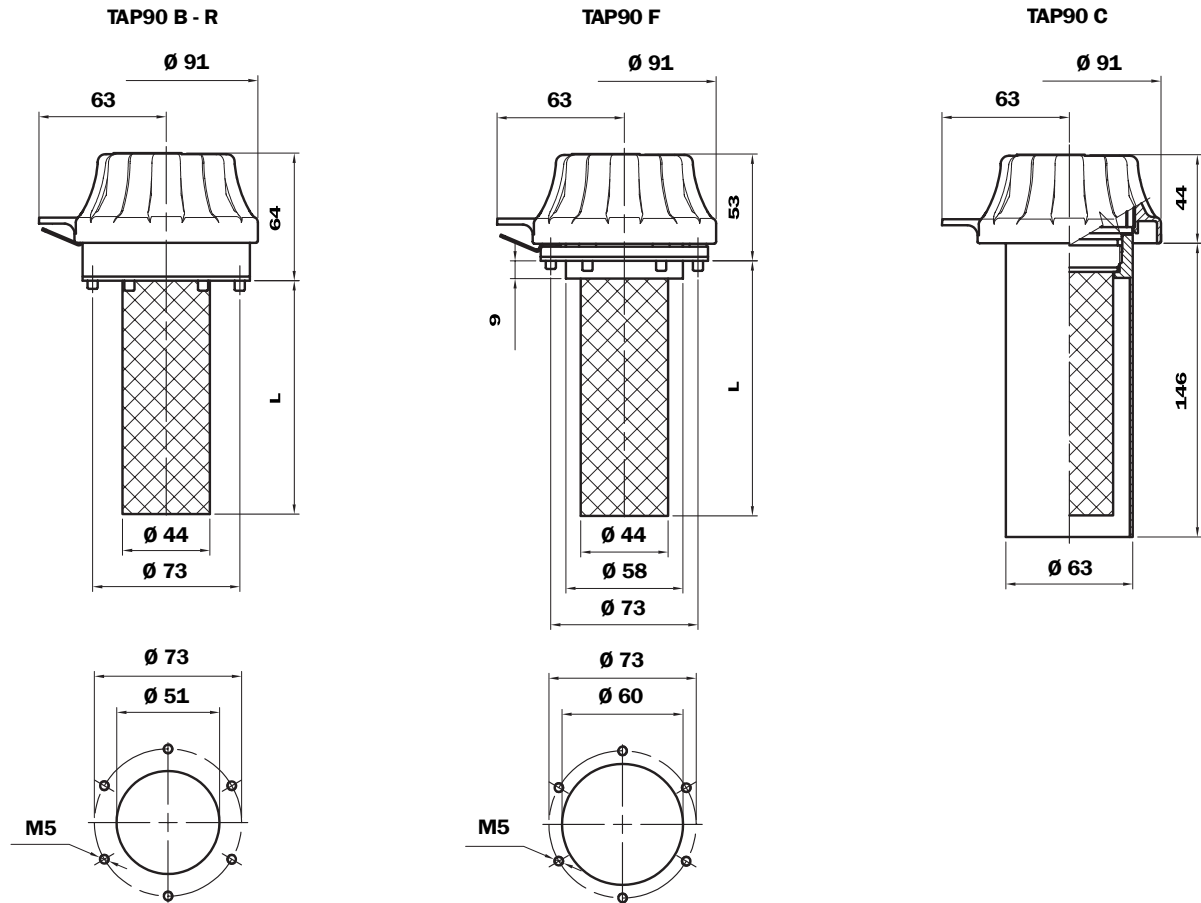
**TAP90 B-C-R-F**  
Filler cap with filter  
element



**TAP90 B-C-R-F**  
Filler cap with  
pressurisation valve



# Dimensions



## Ordering information

**Filler cap**  
**TAP90**

1	2	3	4	5	6	7
<input type="checkbox"/>	<input type="checkbox"/>	<input type="checkbox"/>	<input type="checkbox"/>	<input type="checkbox"/>	<input type="checkbox"/>	<input type="checkbox"/>
<b>B</b>	<b>03</b>	<b>A</b>	<b>1</b>	<b>0</b>	<b>5</b>	<b>P01</b>

**Example: TAP90**

### 1 - Connection to reservoir

<b>B</b>	Flange with bayonet connection
<b>C</b>	Weld riser (M52X2 version only)
<b>F</b>	Flange with threaded M52x2 connection Spigot Ø 60 (DIN 24557)
<b>R</b>	Flange with M52X2 threaded connection

### 2 - Filter element

<b>00</b>	Without filter (Blank filler cap)
<b>03</b>	3 µm
<b>10</b>	10 µm

### 3 - Seal

<b>A</b>	NBR
----------	-----

### 4 - Valves

<b>0</b>	Without
<b>1</b>	0.3 bar pressurisation valve
<b>2</b>	0.7 bar pressurisation valve

### 5 - Variantes

<b>0</b>	Standard
<b>L</b>	With Padlock tab
<b>A</b>	With Dipstick
<b>C</b>	With Chain external for connection <b>B</b> With Chain internal for connection <b>C-F-R</b> (with basket only)
<b>D</b>	With Padlock tab and chain external for connection <b>B</b> With Padlock tab and chain internal for connection <b>C-F-R</b> (with basket only)
<b>E</b>	Dipstick and chain external (only connection <b>B</b> )
<b>F</b>	Dipstick and Padlock tab
<b>G</b>	Dipstick, Padlock tab and chain external (only connection <b>B</b> )

### 6 - Basket (Stainless steel basket on request)

<b>0</b>	Without
<b>1</b>	L= 120 mm
<b>3</b>	L= 250 mm

In the version with chain the L= 120 basket features a press fitting.

### 7 - Options

<b>P01</b>	standard
------------	----------

