

# GG90 SERIES

## 90 degree rotary couplings

### INTRODUCTION

Holmbury's GG90 Series 90 degree rotary couplings are designed for use on hydraulics lines that may be subject to torsional stress to allow rotation of hydraulic pipes and hoses. Using a rotary coupling in the hydraulic line stops the hose twisting, limiting stress and increasing hose lifespan.

### CONSTRUCTION

- Carbon steel with trivalent plating
- Fitted with Nitrile seals
- Also available in AISI 316 stainless steel (See SR90 Series)

### FEATURES

- Reduces torsional forces
- Spindle is carried on a roller bearing and has a low friction shaft seal that can rotate at maximum pressure with low torque

### SPECIFICATIONS

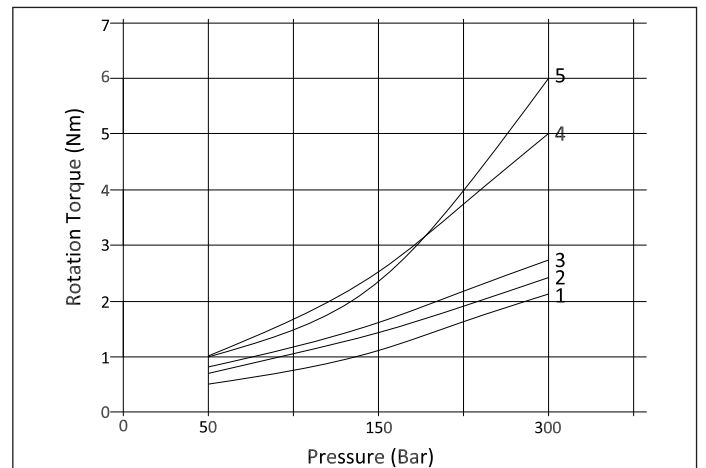
- Operating temperatures (with Nitrile seals): -40°C (-40°F) to 106°C (223°F)

### APPLICATIONS

- Designed for usage in general hydraulic systems, machine tools, test equipment, agricultural, and mobile hydraulics



### ROTATIONAL TORQUE



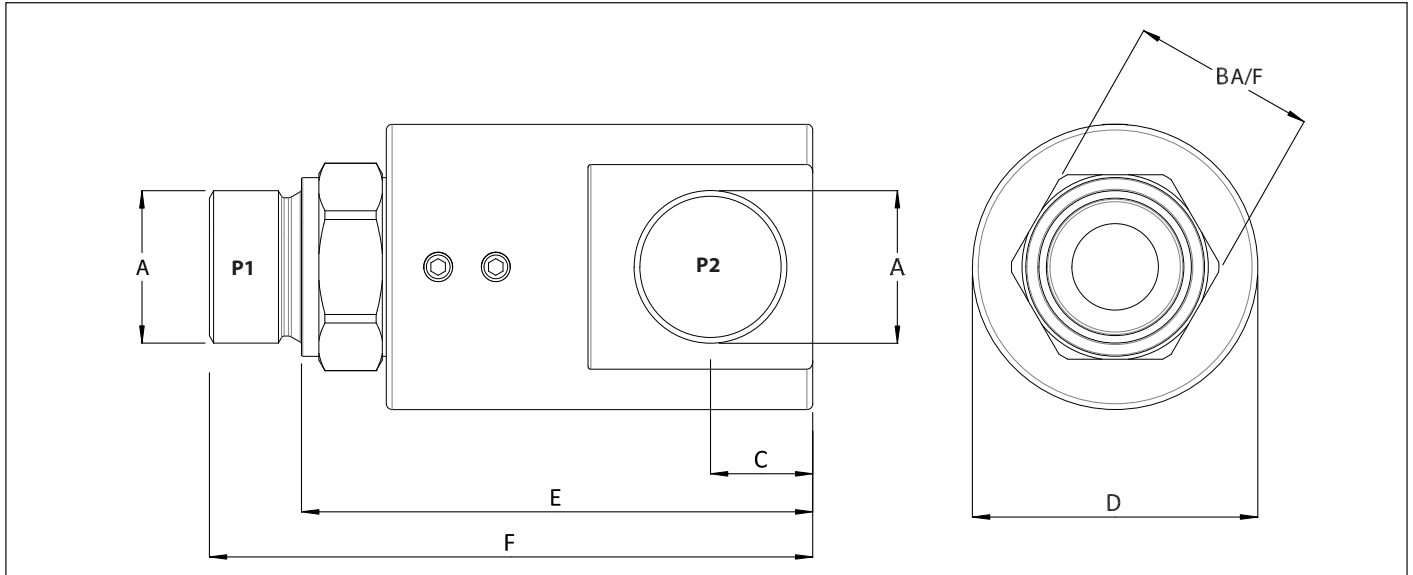
### ORDER CODES

**GG90 - 19 - 12 G M - 12 G**

<b>Series</b> GG90		<b>Thread Type (Female Only)</b> G = BSPP N = NPT S = SAE
<b>Body Size</b>		<b>Thread Size (P2)</b>
06 - 1/4"    25 - 1"		04 - 1/4"    16 - 1"
10 - 3/8"    32 - 1 1/4"		06 - 3/8"    20 - 1 1/4"
12 - 1/2"    40 - 1 1/2"		08 - 1/2"    24 - 1 1/2"
19 - 3/4"    50 - 2"		12 - 3/4"    32 - 2"
<b>Thread Size (P1)</b>	<b>Thread Type</b>	
04 - 1/4"    16 - 1"	G = BSPP	
06 - 3/8"    20 - 1 1/4"	N = NPT	
08 - 1/2"    24 - 1 1/2"	S = SAE	
12 - 3/4"    32 - 2"		



## DRAWING



## DIMENSIONS

Size	Thread Size (A)	B	C	D	E	F	Maximum Working Pressure	Maximum Flow Rate
		Dimensions in mm					Bar	L/Min
		Dimensions in Inches					Psi	
GG90-06	1/4"	19	11.3	33	57.5	71	400	25
		0.7	0.4	1.3	2.3	2.8	5800	
GG90-10	3/8"	24	13.5	37.7	65.7	77.5	400	45
		0.9	0.5	1.5	2.6	3.1	5800	
GG90-12	1/2"	27	16.3	39.5	77.5	91.4	360	80
		1.1	0.6	1.6	3.1	3.6	5220	
GG90-19	3/4"	34	19	55.9	81	100	310	120
		1.3	0.7	2.2	3.2	3.9	4495	
GG90-25	1"	41.2	22.8	59.5	101	120	280	150
		1.6	0.9	2.3	4.0	4.7	4060	
GG90-32	1 1/4"	50	32	64.5	84.1	120	250	200
		2.0	1.3	2.5	3.3	4.7	3625	
GG90-40	1 1/2"	55	39	76	114.5	137.5	210	250
		2.2	1.5	3.0	4.5	5.4	3045	
GG90-50	2"	70	43.5	86	123.4	149	180	300
		2.8	1.7	3.4	4.9	5.9	2610	

PSI= Bar x14.5 Inches= mm/25.4