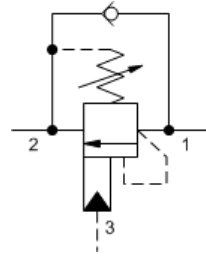


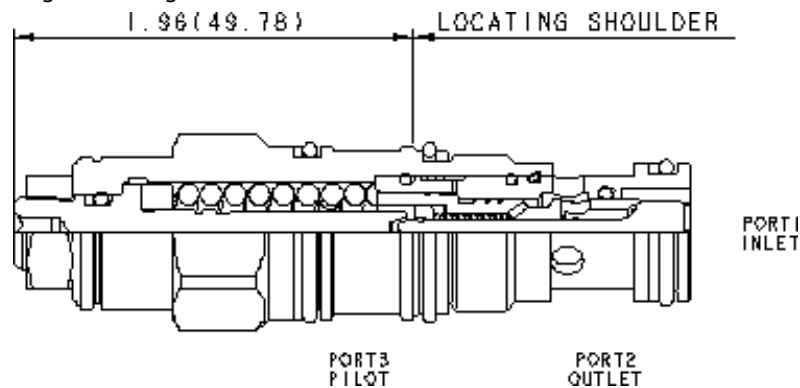


## 3:1 pilot ratio, standard capacity counterbalance valve – CBCA-LHN Model



### Technical Features

- Counterbalance valves should be set at least 1.3 times the maximum load induced pressure.
- Turn adjustment clockwise to decrease setting and release load.
- Full clockwise setting is less than 200 psi (14 bar).  
All 3-port counterbalance, load control, and pilot-to-open check cartridges are physically interchangeable (i.e. same flow path, same cavity for a given frame size).
- Sun counterbalance cartridges can be installed directly into a cavity machined in an actuator housing for added protection and improved stiffness in the circuit.
- Two check valve cracking pressures are available. Use the 25 psi (1,7 bar) check unless actuator cavitation is a concern.
- This valve does not have positive seals on the pilot section and will pass up to 2 in<sup>3</sup>/min.@1000 psi (32 cc/min.@70 bar) between port 2 and port 3. This is a consideration in master-slave circuits and in the leak testing of valve-cylinder assemblies.
- Backpressure at port 2 adds to the effective relief setting at a ratio of 1 plus the pilot ratio times the backpressure.
- Reseat exceeds 85% of set pressure when the valve is standard set. Settings lower than the standard set pressure may result in lower reseal percentages.
- Corrosion resistant cartridge valves are intended for use in corrosive environments and are identified by the model code suffix /AP (see Option Selection below). External parts are made from stainless steel with titanium or brass components, where applicable. Internal parts are made from carbon steel leaded alloy, the same as standard valves. For further details, please see the Materials of Construction page.
- Incorporates the Sun floating style construction to minimize the possibility of internal parts binding due to excessive installation torque and/or cavity/cartridge machining variations.





# HYDRAULIC MEGASTORE

Serving the Hydraulics Industry Worldwide

	U.S Units	Metric Units
<b>Cavity</b>	T-11A	
<b>Capacity</b>	15 gpm	60 L/min.
<b>Pilot Ratio</b>	3:1	
<b>Maximum Recommended Load Pressure at Maximum Settings</b>	3075 psi	215 bar
<b>Maximum Setting</b>	4000 psi	280 bar
<b>Adjustment – Number of Counter clockwise Turns to Increase Setting</b>	3.75	
<b>Factory Pressure Settings Established at</b>	2 in <sup>3</sup> /min	30 cc/min.
<b>Maximum Valve Leakage at Reseat</b>	5 drops/min.	0,3 cc/min.
<b>Operating Characteristics</b>	Standard	
<b>Series (from Cavity)</b>	Series 1	
<b>Reseat</b>	>85% of setting	
<b>Valve Hex Size</b>	7/8 in.	22,2 mm
<b>Valve Installation Torque</b>	30 – 35 lbf ft	41 – 47 Nm
<b>Adjustment Screw Internal Hex Size</b>	5/32 in.	4mm
<b>Adjustment Locknut/Cap Hex Size</b>	9/16 in.	15mm
<b>Adjustment Nut Torque</b>	80 – 90 lbf in.	9 – 10 Nm
<b>Seal Kits – Cartridge</b>	Buna 990-011-007	
<b>Seal Kits – Cartridge</b>	Polyurethane 990-011-002	
<b>Seal Kits – Cartridge</b>	Viton 990-011-006	
<b>Model Weight</b>	0.36 lb.	0.16 kg.

