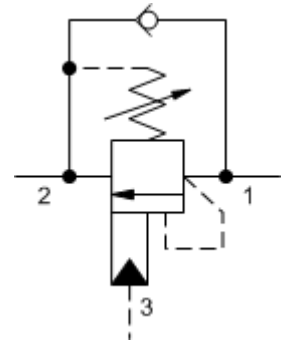


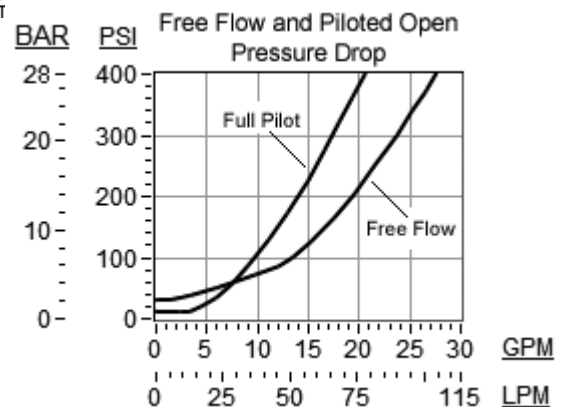
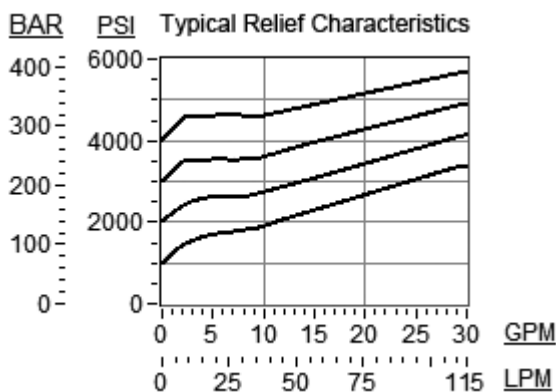
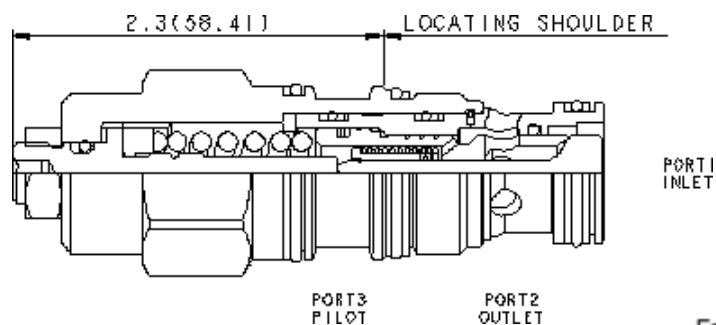


3:1 pilot ratio, standard capacity counterbalance valve – CBEA-LAN

Model



- Counterbalance valves should be set at least 1.3 times the maximum load induced pressure.
- Turn adjustment clockwise to decrease setting and release load.
- Full clockwise setting is less than 200 psi (14 bar).
- All 3-port counterbalance, load control, and pilot-to-open check cartridges are physically interchangeable (i.e. same flow path, same cavity for a given frame size).
- Sun counterbalance cartridges can be installed directly into a cavity machined in an actuator housing for added protection and improved stiffness in the circuit.
- Two check valve cracking pressures are available. Use the 25 psi (1,7 bar) check unless actuator cavitation is a concern.
- This valve does not have positive seals on the pilot section and will pass up to 2 in³/min. @ 1000 psi (32 cc/min. @ 70 bar) between port 2 and port 3. This is a consideration in master-slave circuits and in the leak testing of valve-cylinder assemblies.
- Backpressure at port 2 adds to the effective relief setting at a ratio of 1 plus the pilot ratio times the backpressure.
- Reseat exceeds 85% of set pressure when the valve is standard set. Settings lower than the standard set pressure may result in lower reseal percentages.
- Incorporates the Sun floating style construction to minimize the possibility of internal parts binding due to excessive installation torque and/or cavity/cartridge machining variations.





HYDRAULIC MEGASTORE

Serving the Hydraulics Industry Worldwide

	U.S Units	Metric Units
Cavity	T-2A	
Capacity	30gpm	120 L/min.
Pilot Ratio	3:1	
Maximum Recommended Load Pressure at Maximum Setting	3075 psi	215 bar
Maximum Setting	4000 psi	280 bar
Adjustment – Number of Counter Clockwise Turns to Increase Setting	3.75	
Factory Pressure Settings Established at	2 in ³ /min.	30 cc/min.
Maximum Valve Leakage at Reseat	5 drops/min.	0.3 cc/min.
Operating Characteristics	Standard	
Series (From Cavity)	Series 2	
Reseat	>85% of setting	
Valve Hex Size	1 1/8 in.	28,6 mm
Valve Installation Torque	45 – 50 lbf ft	61 – 68 Nm
Adjustment Screw Internal Hex Size	5/32 in.	4 mm
Adjustment Locknut/Cap Hex Size	9/16 in.	15 mm
Adjustment Nut Torque	80 – 90 lbf in.	9 – 10 Nm
Seal Kits - Cartridge	Buna: 990-202-007	
Seal Kits - Cartridge	Polyurethane: 990-002-002	
Seal Kits - Cartridge	Buna: 990-202-006	
Model Weight	0.63 lb.	0.29 kg.