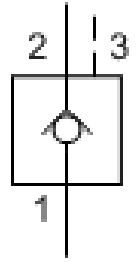


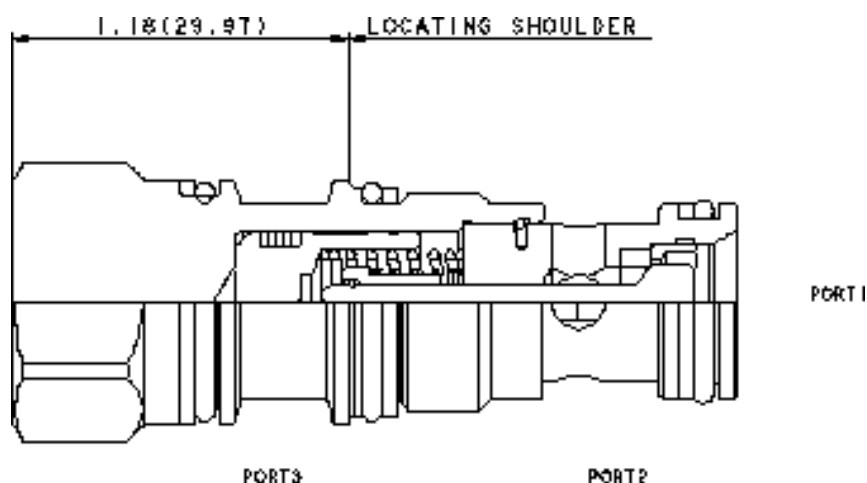


CKCA-XAN - Pilot-to-open check valve with standard pilot and Delrin seat



Technical Features

- This 3 port pilot-to-open check valve and 3 port counterbalance valves are physically interchangeable (i.e. same cavities, same flow path for a given frame size). However, cartridge extension dimensions from the mounting surface may vary.
- Provides hose break protection, prevents loads from drifting and positively locks pressurized loads.
- Standard unsealed pilot allows air trapped in the pilot line to be purged from the circuit.
- Optional external porting out of the hex end of the cartridge is available for external piloting. In this configuration, port 3 is blocked. See Control options E, and P.
- Pilot-to-open check cartridges are locking valves, not motion control valves. For motion control applications, use counterbalance valves.
- The Delrin seat is suitable for dirty, medium pressure systems that are not subjected to high flows or temperatures.
- Extremely low leakage. If the load drifts due to the valve, the seat has probably been damaged by contamination and the valve should be replaced.
- For models with manual load release control option, turn load release clockwise to release load.
- Incorporates the Sun floating style construction to minimize the possibility of internal parts binding due to excessive installation torque and/or cavity/cartridge machining variations.





HYDRAULIC MEGASTORE

Serving the Hydraulics Industry Worldwide

	U.S. Units	Metric Units
Cavity	T-11A	
Capacity	15 gpm	260 L/min.
Pilot Ratio	3:1	
Maximum Operating Pressure	2500 psi	175 bar
Maximum Valve Leakage at Reseat	1 drops/min.	0,07 cc/min
Series (from Cavity)	Series 1	
Valve Hex Size	7/8 in.	22,2 mm
Valve Installation Torque	30 – 35 lbf ft	41 - 47 Nm
Seal Kits – Cartridge	Buna: 990-011-007	
Seal Kits – Cartridge	Polyurethane: 990-011-002	
Seal Kits – Cartridge	Viton: 990-011-006	
Model Weight	0.28 lb.	0.13 kg.

