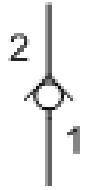


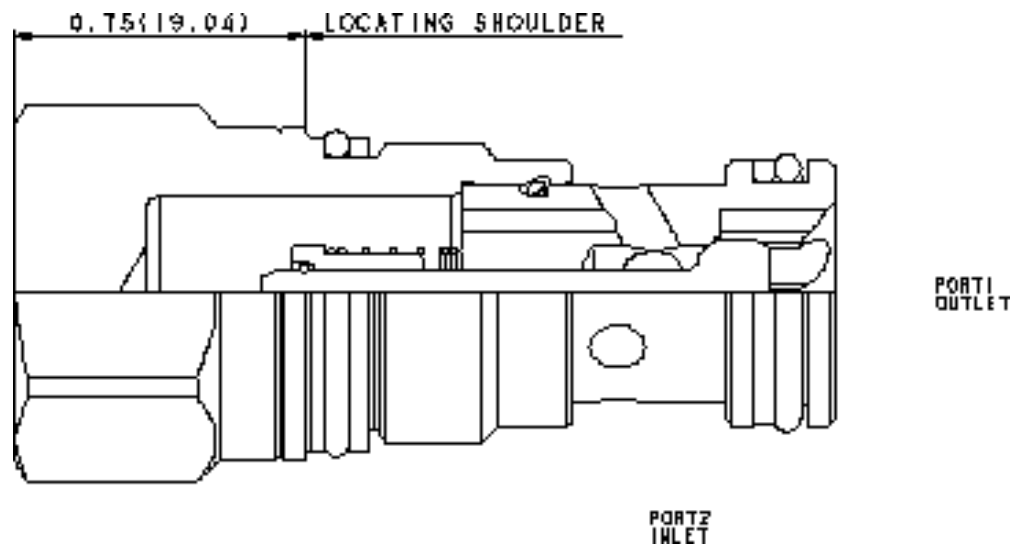


CXCD-XAN -Check : 2-Port : Free Flow Side to Nose



Technical Features

- Two-port check valves share the same cavity for a given frame size, however, pay close attention as flow paths may be in opposite directions.
- These check valves are considered circuit savers for existing circuits where manifold drillings are incorrect. The capacity of side-to-nose (port 2 to port 1) 2-port check valves is approximately 30% less than preferred models with a nose-to-side (port 1 to port 2) flow path.
- Check valves offer extremely low leakage rates with a maximum leakage of less than 1 drop per minute (0,07 cc/min).
- Will accept 5000 psi (350 bar) at ports 1 and 2.
- Incorporates the Sun floating style construction to minimize the possibility of internal parts binding due to excessive installation torque and/or cavity/cartridge machining variations.





HYDRAULIC MEGASTORE

Serving the Hydraulics Industry Worldwide

	U.S. Units	Metric Units
Cavity	T-13A	
Capacity	15 gpm	60 L/min.
Maximum Operating Pressure	5000 psi	350 bar
Maximum Valve Leakage at 110 SUS (24 cSt)	1 drops/min.	0,07 cc/min.
Series (Cavity)	Series 1	
Valve Hex Size	7/8 in.	22,2 mm
Valve Installation Torque	30 – 35 lbf ft	41 -47 Nm
Seal Kits – Cartridge	Buna: 990-010-007	
Seal Kits – Cartridge	Polyurethane: 990-010-002	
Seal Kits – Cartridge	Viton: 990-010-006	
Model Weight	0.21 lb.	0.10 kg.

