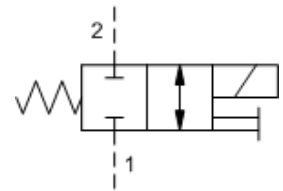


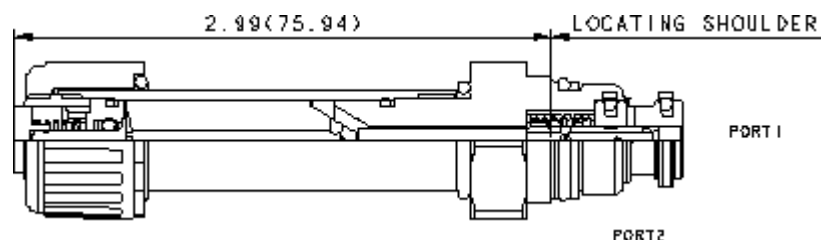


## DAAA-MCN 2-way, solenoid-operated directional spool valve - pilot capacity



### Technical Features

- The solenoid tube assembly is fatigue rated for 5000 psi (350 bar) service.
- This valve is direct actuated and requires no minimum hydraulic pressure for operation.
- A manual push-type override is a standard feature.
- Cartridge can be installed directly into a cavity in some Sun pilot operated and ventable cartridges to provide electrically operated pilot control functions. Separate pilot lines are eliminated and only one cavity needs to be machined to accommodate both the control and primary function.
- Highly efficient tube design requires only 12 Watts to shift the valve.
- Valves exhibit extremely low leakage rates; less than 10 drops/min. @ 5000 psi (0,7 cc/min @ 350 bar).
- This valve utilizes a wet armature design. This means that the working fluid surrounds the armature and is exposed to the heat generated by the coil. This can be a factor if the coil is energized for long periods of time. Some fluids, notably water/glycol mixtures, break down at these temperatures over time and form varnishes that will affect the function of the cartridge.
- A wide variety of coil termination and voltage options are available, with and without surge protection.
- Coils are interchangeable with other Sun Series P pilot solenoid products and can be mounted on the tube in either direction.
- Incorporates the Sun floating style construction to minimize the possibility of internal parts binding due to excessive installation torque and/or cavity/cartridge machining variations.





# HYDRAULIC MEGASTORE

Serving the Hydraulics Industry Worldwide

|   | U.S. Units               | Metric Units          |
|---|--------------------------|-----------------------|
| Cavity                                    | T-8A                     |                       |
| Capacity                                  | .25 gpm                  | 1 L/min.              |
| Manual Override Force Requirement         | 10 lbs/1000 psi @ Port 1 | 66 N/100 bar @ Port 1 |
| Maximum Valve Leakage at 110 SUS (24 cSt) | 10 drops/min. @5000 psi  | 0,7 cc/min. @350 bar  |
| Response Time – Typical                   | 30ms                     |                       |
| Series (from Cavity)                      | Series P                 |                       |
| Switching Frequency                       | 15000 cycles/hr          |                       |
| Solenoid Tube Diameter                    | .56 in.                  | 14, 2 mm              |
| Valve Hex Size                            | 7/8 in.                  | 22,2 mm               |
| Valve Installation Torque                 | 20-25 lbf ft             | 27 – 34 Nm            |
| Seal Kits – Cartridge                     | Buna 990-008-007         |                       |
| Seal Kits – Cartridge                     | Polyurethane 990-008-002 |                       |
| Seal Kits – Cartridge                     | Viton: 990-008-006       |                       |
| Seal Kits – Coil                          | Viton: 990-760-006       |                       |
| Model Weights                             | 0.32 lb.                 | 0.15 kg.              |

