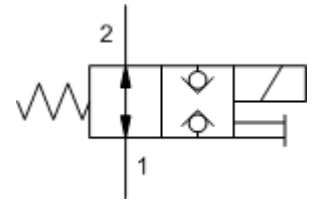


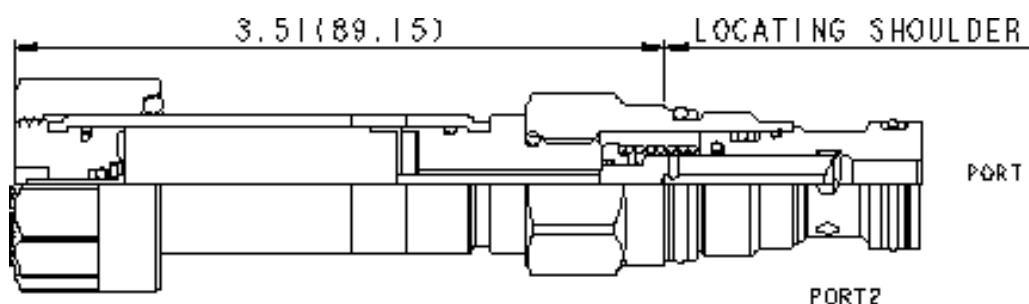


DTDA-MHN 2-way, direct-acting, solenoid-operated directional poppet valve



Technical Features

- The solenoid tube assembly is fatigue rated for 5000 psi (350 bar) service.
- This valve is direct actuated and requires no minimum hydraulic pressure for operation.
- This cartridge has several manual override choices, including no manual override. See Option Selection below. Please note: Manual override functionality is not compatible with weatherized coils.
- Valves exhibit extremely low leakage rates; less than 10 drops/min. @ 5000 psi (0,7 cc/min @ 350 bar).
- This valve is suitable for load holding applications when using the Normally Closed option. In the event of power failure, the valve will spring closed.
- On models equipped with the D or L control, the detent mechanism in the manual override is meant for temporary actuation. The D, L and T manual control assembly has a mechanical life expectancy of approximately 7,000 cycles.
- This valve utilizes a wet armature design. This means that the working fluid surrounds the armature and is exposed to the heat generated by the coil. This can be a factor if the coil is energized for long periods of time. Some fluids, notably water/glycol mixtures, break down at these temperatures over time and form varnishes that will affect the function of the cartridge.
- A wide variety of coil termination and voltage options are available, with and without surge protection.
- The solenoid's unique magnetic design results in a high efficiency solenoid, yielding high spool actuating force per Watt expended, leading to reliable valve shifting.
- Coils are interchangeable with other Sun Series 1 solenoid products and can be mounted on the tube in either direction.
- Coil connector options offer ratings up to IP69K. See individual coil product pages for details. Additional weatherized coils and kits are available for more complete environmental protection.
- Incorporates the Sun floating style construction to minimize the possibility of internal parts binding due to excessive installation torque and/or cavity/cartridge machining variations.





HYDRAULIC MEGASTORE

Serving the Hydraulics Industry Worldwide

	U.S Units.	Metric Units
Cavity	T-13A	
Capacity	10 gpm	40 L/min.
Manual Override Force Requirement	5 lbs/1000 psi	33 N/100 bar @ Port 1
Manual Override Stroke	.10 in.	2,5 mm
Maximum Operating Pressure	5000 psi	350 bar
Maximum Valve Leakage at 110 SUS (cSt)	10 drops/min. @5000 psi	0,7 cc/min. @350 bar
Response Time - Typical	50ms	
Series (from cavity)	Series 1	
Switching Frequency	15000 cycles/hr	
Solenoid Tube Diameter	.75 in	19 mm
Valve Hex Size	7/8 in.	22,2 mm
Valve Installation Torque	30 – 35 lbf ft	41 – 47 Nm
Seal Kits – Cartridge	Buna: 990-413-007	
Seal Kits – Cartridge	Polyurethane: 990-413-006	
Seal Kits – Cartridge	Viton: 990-413-006	
Seal Kits – Coil	Viton: 990-770-006	
Model Weights	0.66 lb	0.30 kg

