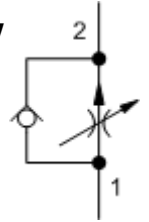




FDCB-KAN - Fully adjustable pressure compensated flow control valve with reverse flow check

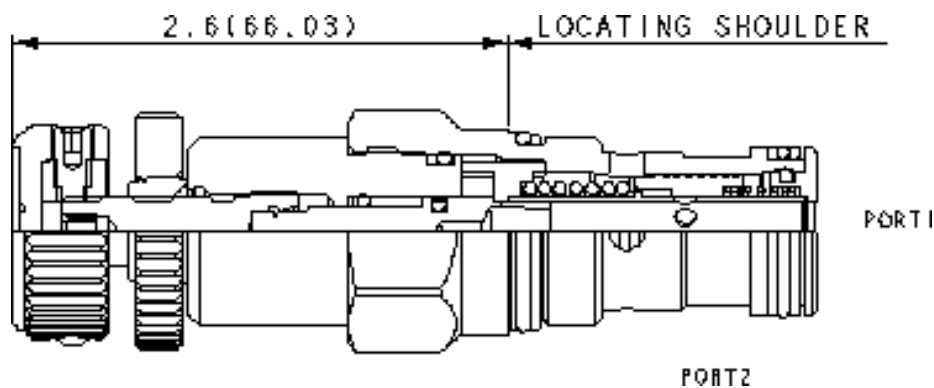


Technical Features

- All 2-port flow control cartridges are physically and functionally interchangeable (i.e. same flow path, same cavity for a given frame size). However, cartridge extension dimensions from the mounting surface may vary.
- A balanced adjustment mechanism allows for easy adjustment even at high pressures.
- The sharp-edged orifice design minimizes flow variations due to viscosity changes.
- Minimum leakage is .2 gpm (0,8 L/min) when the adjustment mechanism is turned to the shut-off position.

Special Notes

- For cartridges configured with an O control (panel mount handknob), a .75 in. (19 mm) diameter hole is required in the panel.





HYDRAULIC MEGASTORE

Serving the Hydraulics Industry Worldwide

	U.S. Units	Metric Units
Cavity	T-5A	
Capacity	12gpm	45 L/min.
Adjustment –Number of Counterclockwise Turns – Fully Closed to Fully Open	5	
Maximum Operating Pressure	5000 psi	350 bar
Series (from Cavity)	Series 2	
Valve Hex Size	1 1/8 in.	28,6 mm
Valve Installation Torque	45 – 50 lbf ft	61 – 68 Nm
Adjustment Screw Internal Hex Size	5/32 in.	4mm
Adjustment Locknut/Cap Hex Size	9/16 in.	15 mm
Adjustment Nut Torque	80 – 90 lbf in.	9 – 10 Nm
Seal Kits – Cartridge	Buna: 990-203-007	
Seal Kits – Cartridge	Viton: 990-203-006	
Model Weight	0.69 lb.	0.31 kg.

