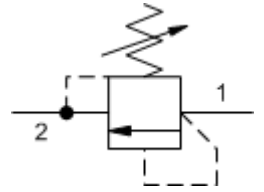


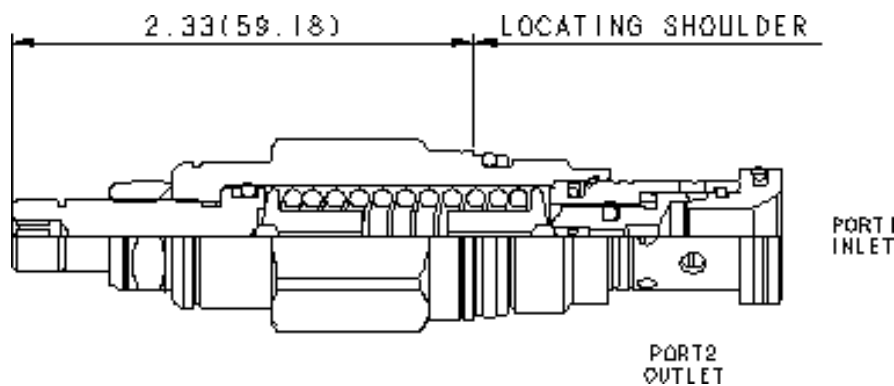


RDDA-LWN - Relief: 2 Port: Direct Acting



Technical Features

- All 2-port relief cartridges (except pilot reliefs) are physically and functionally interchangeable (same flow path, same cavity for a given frame size).
- Will accept maximum pressure at port 2; suitable for use in cross port relief circuits.
- The seals on the adjust screw are exposed to system pressure which means this valve can only be adjusted when the pressure is removed. The setting procedure is; check the setting, remove the pressure, adjust the valve, check the new setting.
- Valve is relatively insensitive to varying oil temperatures and oil borne contamination.
- Select a spring range where the desired relief setting is approximately mid-range to high between the minimum and maximum pressure to ensure maximum valve repeatability.
- Suitable for use in load holding applications.
- Back pressure on the tank port (port 2) is directly additive to the valve setting at a 1:1 ratio.
- Incorporates the Sun floating style construction to minimize the possibility of internal parts binding due to excessive installation torque and/or cavity/cartridge machining variations.





HYDRAULIC MEGASTORE

Serving the Hydraulics Industry Worldwide

	U.S. Units	Metric Units
Cavity	T-10A	
Capacity	25 gpm	95 L/min.
Factory Pressure Settings Established at	4 gpm	15 L/min
Maximum Operating Pressure	5000 psi	350 bar
Maximum Valve Leakage at Reseat	10 drops/min	0,7 cc/min.
Response Time – Typical	2ms	
Series (from cavity)	Series 1	
Reseat	>90% of setting	
Adjustment – Number of Clockwise Turns to Increase Setting	6	
Valve Hex Size	7/8 in.	22.2 mm
Valve Installation Torque	30 – 35 lbf ft	41 – 47 Nm
Adjustment Screw Internal Hex Size	5/32 in.	4 mm
Adjustment Locknut/Cap Hex Size	9/16 in.	15 mm
Adjustment Nut Torque	80 – 90 lbf in.	9 – 10 Nm
Seal Kits – Cartridge	Buna: 990-310-007	
Seal Kits – Cartridge	Viton: 990-310-006	
Model Weight	0.37 lb.	0.17 kg.

