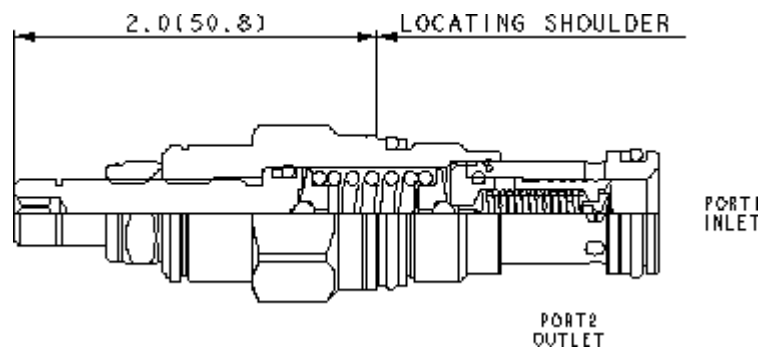
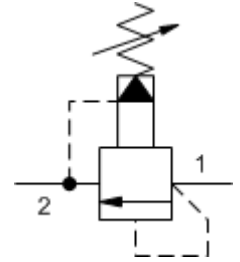




RPEC-LCN - Cartridges: Relief: 2 Port: Pilot Operated, Balanced Piston

Technical Features

- All 2-port relief cartridges (except pilot reliefs) are physically and functionally interchangeable (same flow path, same cavity for a given frame size)
- Will accept maximum pressure at port 2; suitable for use in cross port relief circuits. If used in cross port relief circuits, consider spool leakage.
- Main stage orifice is protected by a 150 micron stainless steel screen.
- Not suitable for use in load holding applications due to spool leakage.
- Back pressure on the tank port (port 2) is directly additive to the valve setting at a 1:1 ratio.
- W and Y controls (where applicable) can be specified with or without a special setting. When no special setting is specified, the valve is adjustable throughout its full range using the W or Y control. When a special setting is specified, this setting represents the maximum setting of the valve.
- Corrosion resistant cartridge valves are intended for use in corrosive environments and are identified by the model code suffix /AP (see Option Selection below). External parts are made from stainless steel with titanium or brass components, where applicable. Internal parts are made from carbon steel leaded alloy, the same as standard valves. For further details, please see the Materials of Construction page.
- Incorporates the Sun floating style construction to minimize the possibility of internal parts binding due to excessive installation torque and/or cavity/cartridge machining variations.





HYDRAULIC MEGASTORE

Serving the Hydraulics Industry Worldwide

	U.S. Units	Metric Units
Cavity	T-10A	
Capacity	25 gpm	95 L/min.
Factory Pressure Settings Established at	4 gpm	15 L/min.
Maximum Operating Pressure	5000 psi	350 bar
Maximum Valve Leakage at 100 SUS (24 cSt)	2 in ³ /min.@1000 psi	30 cc/in.@70 bar
Response Time – Typical	10 ms	
Series (from Cavity)	Series 1	
Adjustment – Number of Clockwise Turns to Increase Setting	5	
Valve Hex Size	7/8 in.	22,2 mm
Valve Installation Torque	30 -35 lbf ft.	41 – 47 Nm
Adjustment Screw Internal Hex Size	5/32 in.	4 mm
Adjustment Locknut/Cap Hex Size	9/16 in.	15 mm
Adjustment Nut Torque	80 - 90 lbf ft.	9 – 10 Nm
Seal Kits – Cartridge	Buna: 990-010-007	
Seal Kits – Cartridge	Polyurethane: 990-010-002	
Seal Kits – Cartridge	Viton: 990-010-006	
Model Weight	0.32 lb.	0.15 kg.

