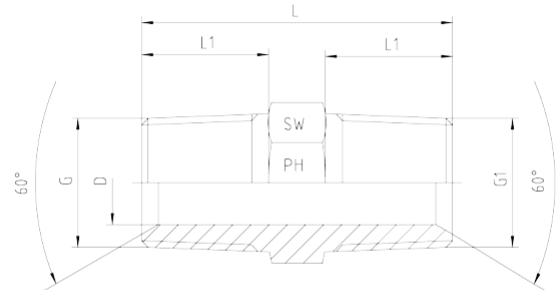
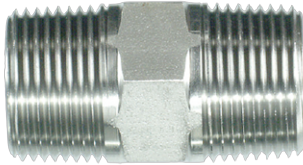


**Rubrik 5.15
BSP - Taper - BSP - Taper**


BSP - Taper
BSP - Taper

Pressure	Thread		Approx. Dimensions				Order-Code	
	PN	G = BSPT	G1 = BSPT	L	L1	D		SW
400		1/8"-28	1/8"-28	22,0	8	4,0	12	1070710-02-02
400		1/4"-19	1/4"-19	30,0	12	5,0	14	1070710-04-04
400		3/8"-19	3/8"-19	31,0	12	8,0	19	1070710-06-06
400		1/2"-14	1/2"-14	38,0	14	13,5	22	1070710-08-08
400		3/4"-14	3/4"-14	43,0	16	18,0	27	1070710-12-12
400		1"-11	1"-11	47,0	18	22,5	36	1070710-16-16
200		1 1/4"-11	1 1/4"-11	52,0	20	29,0	46	1070710-20-20
200		1 1/2"-11	1 1/2"-11	58,0	22	33,5	50	1070710-24-24
100		2"-11	2"-11	68,0	26	46,0	65	1070710-32-32