

HCFE.

ELESA original design

Oil circulation sights



• Material

Transparent polyamide based (PA-T) technopolymer. Resistant to solvents, oils with additives, greases, acids and alkali. Avoid contact with alcohol or detergents containing alcohol.

• Packing ring

NBR synthetic rubber.

• Maximum continuous working temperature

100°C.

Technical data

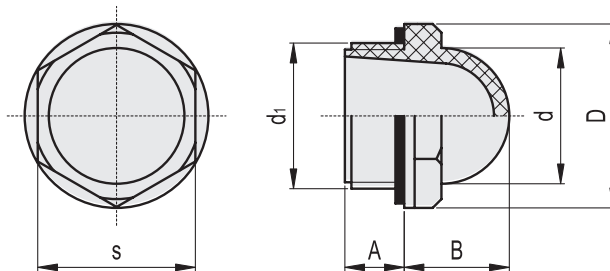
The tightening torque indicated in the table guarantees an optimal tightness, keeping the packing ring in the correct position.

Note

For use with other fluids with special additives, please contact ELESA Sales Department.

Accessories on request

Brass nut type GH. for fitting to reservoirs with wall thickness smaller than 5 mm.



Code	Description	d ₁	A	B	D	d	s	Tightening torque [Nm]	⚖️
10851	HCFE.12-3/8	G 3/8	7.5	13	22.5	15	19	3÷5	4
10901	HCFE.15-1/2	G 1/2	10.5	16	26	19	22	4÷6	5
11001	HCFE.20-3/4	G 3/4	10.5	19.5	31.5	25	27	6÷8	8
11101	HCFE.24-1	G 1	11	24	42	31	36	8÷10	18
11111	HCFE.30-1½	G1 1/4	11.5	26.5	46.5	38	40.5	12÷15	22