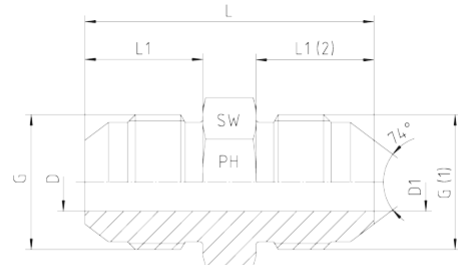
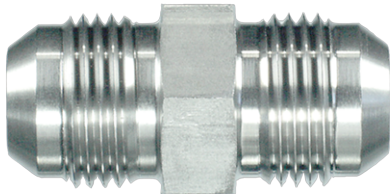


**Rubrik 6.9  
JIC-37° - Adaptors - Straight Unions**

**Straight Unions**
**Male - Male**
**Reducers on request!**
**For Example: Tube 20 to 16 = Oder-Code: 1252510-12-10**

Pressure PN	Tube O.D.		Thread		Approx. Dimensions						Order-Code
	mm	in.	G	G1	L	L1	L2	D	D1	SW	
350	6	1/4"	7/16"-20 UNF		35,0	14,0		4,5		12	1252510-04-04
350	8	5/16"	1/2"-20 UNF		35,0	14,0		5,0		14	1252510-05-05
350			9/16"-18 UNF	7/16"-20 UNF	35,0	14,1	14,0	7,5	4,0	17	1252510-06-04
350	10	3/8"	9/16"-18 UNF		36,0	14,1		7,5		17	1252510-06-06
350			3/4"-16 UNF	9/16"-18 UNF	38,1	16,7	14,1	9,5	7,5	22	1252510-08-06
350	12	1/2"	3/4"-16 UNF		41,0	16,7		9,5		22	1252510-08-08
350			7/8"-14 UNF	3/4"-16 UNF	45,0	19,3	16,7	12,5	9,5	24	1252510-10-08
350	14, 15, 16	5/8"	7/8"-14 UNF		48,0	19,3		12,5		24	1252510-10-10
350			1 1/16"-12 UN	3/4"-16 UNF	48,0	21,9	16,7	15,0	9,5	27	1252510-12-08
350			1 1/16"-12 UN	7/8"-14 UNF	51,0	21,9	19,3	15,0	12,5	27	1252510-12-10
350	18, 20	3/4"	1 1/16"-12 UN		55,0	21,9		15,0		27	1252510-12-12
280			1 5/16"-12 UN	1 1/16"-12 UN	56,0	23,1	21,9	21,5	15,0	36	1252510-16-12
280	25	1"	1 5/16"-12 UN		57,0	23,1		21,5		36	1252510-16-16
210			1 5/8"-12 UN	1 1/16"-12 UN	56,0	24,3	21,9	27,5	15,0	46	1252510-20-12
210			1 5/8"-12 UN	1 5/16"-12 UN	57,0	24,3	23,1	27,5	21,5	46	1252510-20-16
210	28, 30, 32	1 1/4"	1 5/8"-12 UN		61,5	24,3		27,5		46	1252510-20-20
210			1 7/8"-12 UN	1 5/8"-12 UN	65,0	27,5	24,3	33,0	27,5	50	1252510-24-20
150	35, 38	1 1/2"	1 7/8"-12 UN		70,0	27,5		33,0		50	1252510-24-24
360	50	2"	2 1/2"-12 UN		80,0	33,9		45,0		65	1252510-32-32