

SR90 SERIES

Stainless steel 90 degree rotary couplings

INTRODUCTION

Holmbury's SR90 Series stainless steel 90 degree rotary couplings are designed for use on hydraulics lines that may be subject to torsional stress to allow rotation of hydraulic pipes and hoses. Using a rotary coupling in the hydraulic line stops the hose twisting, limiting stress and increasing hose lifespan.

CONSTRUCTION

- AISI 316 stainless steel
- Fitted with Viton seals
- Also available in carbon steel (See GG90 Series)

FEATURES

- Reduces torsional forces
- Spindle is carried on a roller bearing and has a low friction shaft seal that can rotate at maximum pressure with low torque
- For rotational torque graph please see GG90 Series



SPECIFICATIONS

- Operating temperatures (With Viton seals): -20°C (-4°F) to 200°C (392°F)

APPLICATIONS

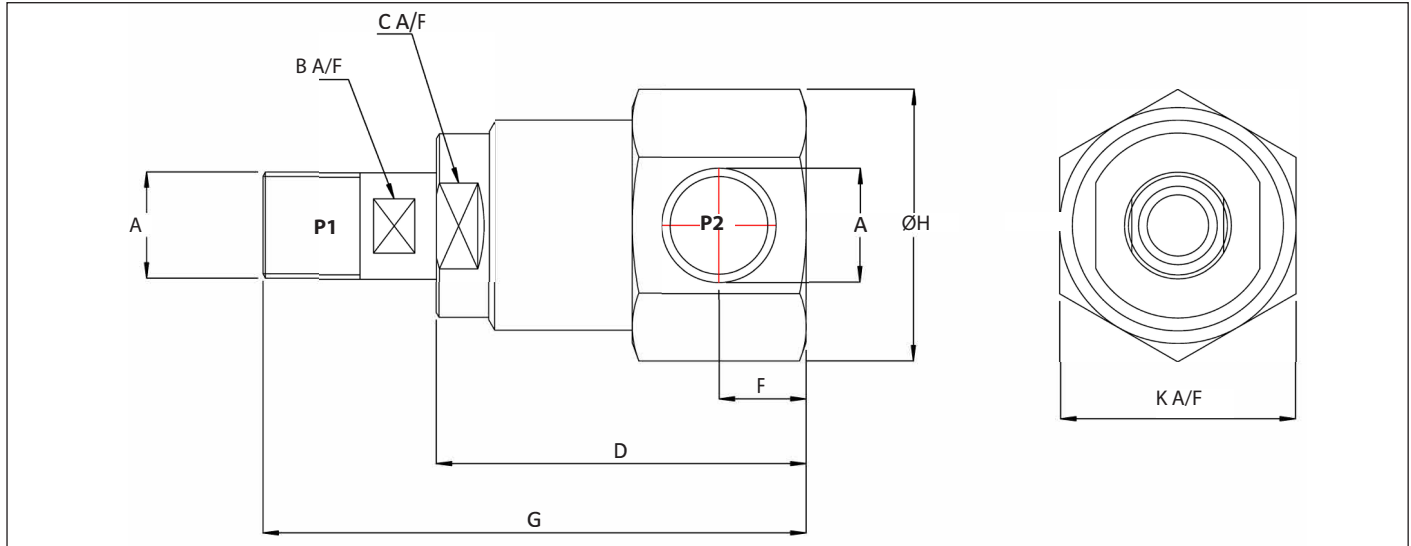
- Designed for usage in general hydraulic systems, machine tools, test equipment, agricultural, and mobile hydraulics

ORDER CODES

		SR90 - 19 - 12		G	M - 12	G		
Series							Thread Type (Female Only)	
SR90							G = BSPP N = NPT S = SAE	
Body Size							Thread Size (P2)	
06 - 1/4"	25 - 1"						04 - 1/4"	16 - 1"
10 - 3/8"	32 - 1 1/4"						06 - 3/8"	20 - 1 1/4"
12 - 1/2"	40 - 1 1/2"						08 - 1/2"	24 - 1 1/2"
19 - 3/4"	50 - 2"						12 - 3/4"	32 - 2"
		Thread Size (P1)		Thread Type		Thread Type (Male Only)		
		04 - 1/4"	16 - 1"	G = BSPP				
		06 - 3/8"	20 - 1 1/4"	N = NPT				
		08 - 1/2"	24 - 1 1/2"	S = SAE				
		12 - 3/4"	32 - 2"					



DRAWING



DIMENSIONS

Size	Thread Size (A)	B	C	K	D	F	G	ØH	Maximum Working Pressure	Maximum Flow Rate
Dimensions in mm									Bar	L/Min
Dimensions in Inches									Psi	
SR90-06	1/4"	11.0	21.0	32.0	52.0	12.5	78.0	35.0	350	25
		0.4	0.8	1.3	2.0	0.5	3.1	1.4	5075	
SR90-10	3/8"	14.0	27.0	36.0	68.0	15.0	98.0	42.0	300	45
		0.6	1.1	1.4	2.7	0.6	3.9	1.7	4350	
SR90-12	1/2"	18.0	32.0	46.0	72.0	16.0	106.0	48.0	300	80
		0.7	1.3	1.8	2.8	0.6	4.2	1.9	4350	
SR90-19	3/4"	24.0	37.0	50.0	80.5	19.0	118.0	57.0	250	120
		0.9	1.5	2.0	3.2	0.7	4.6	2.2	3625	
SR90-25	1"	30.0	46.0	60.0	99.0	22.5	142.0	68.0	250	150
		1.2	1.8	2.4	3.9	0.9	5.6	2.7	3625	
SR90-32	1 1/4"	38.0	55.0	60.0	111.0	29.5	155.0	---	200	200
		1.5	2.2	2.4	4.4	1.2	6.1	---	2900	
SR90-40	1 1/2"	41.0	70.0	75.0	121.0	37.0	170.0	---	150	250
		1.6	2.8	3.0	4.8	1.5	6.7	---	2175	
SR90-50	2"	55.0	80.0	90.0	142.0	44.5	190.0	---	150	300
		2.2	3.1	3.5	5.6	1.8	7.5	---	2175	

PSI= Bar x14.5 Inches= mm/25.4