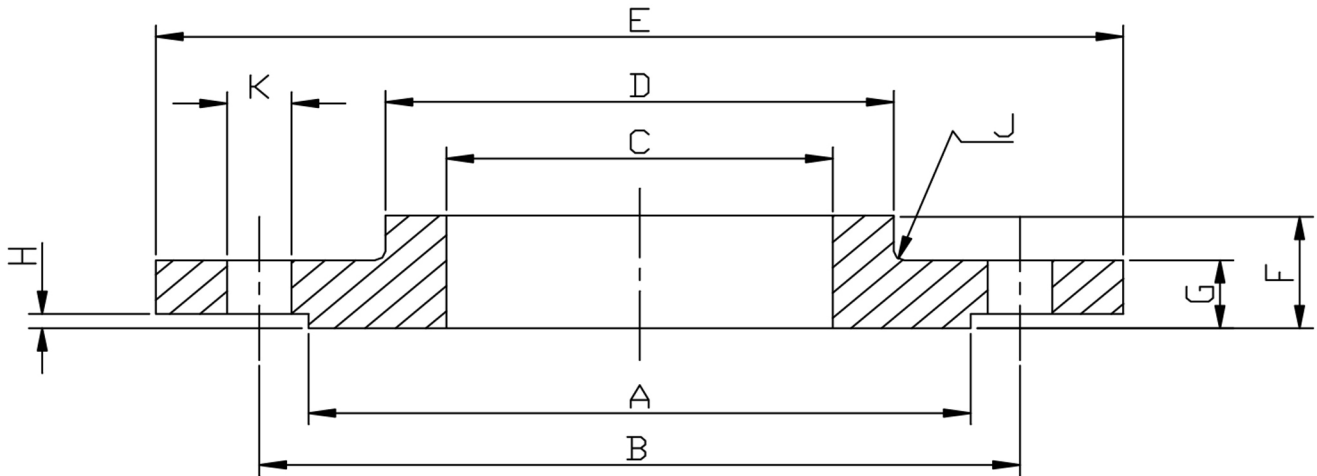




**HYDRAULIC
MEGASTORE**



PIPE SIZE	DN	PART No 316/L	PART No 304/L	A	B	C	D	E	F	G	H	J	K	Kg EACH
1/2	15	F150S0.5	F150S0.5-304	34.9	60.3	22.3	30.2	88.9	15.9	11.1	1.6	3	4X15.9	0.4
3/4	20	F150S0.75	F150S0.75-304	42.9	69.8	27.7	38.1	98.4	15.9	12.7	1.6	3	4X15.9	0.7
1	25	F150S1.0	F150S1.0-304	50.8	79.4	34.5	49.2	107.9	17.5	14.3	1.6	3	4X15.9	0.8
1 1/4	32	F150S1.25	F150S1.25-304	63.5	88.9	43.2	58.7	117.5	20.6	15.9	1.6	3	4X15.9	1.1
1 1/2	40	F150S1.5	F150S1.5-304	73.0	98.4	49.5	65.1	127.0	22.2	17.5	1.6	3	4X15.9	1.4
2	50	F150S2.0	F150S2.0-304	92.1	120.6	62.0	77.8	152.4	25.4	19.0	1.6	3	4X19.0	2.2
2 1/2	65	F150S2.5	F150S2.5-304	104.8	139.7	74.7	90.5	177.8	28.6	22.2	1.6	3	4X19.0	3.6
3	80	F150S3.0	F150S3.0-304	127.0	152.4	90.7	107.9	190.5	30.2	23.8	1.6	3	4X19.0	4.1
4	100	F150S4.0	F150S4.0-304	157.2	190.5	116.1	134.9	228.6	33.3	23.8	1.6	3	8X19.0	5.6
5	125	F150S5.0	F150S5.0-304	185.7	215.9	143.8	163.5	254.0	36.5	23.8	1.6	6.5	8X22.2	6.3
6	150	F150S6.0	F150S6.0-304	215.9	241.3	170.7	192.1	279.4	39.7	25.4	1.6	6.5	8X22.2	7.5
8	200	F150S8.0	F150S8.0-304	269.9	298.4	221.5	246.0	343.0	44.5	28.6	1.6	6.5	8X22.2	12.6
10	250	F150S10.0	F150S10.0-304	323.8	362.0	276.4	305.0	406.0	49.2	31.8	1.6	6.5	12X25.4	18.5

*ASTM A182 316/L AND 304/L
 * TO ANSI/ASME B16.5
 *DIMENSIONS IN MM
 *WEIGHTS IN Kg EACH

DIMENSIONS SUBJECT TO CHANGE, PLEASE CONTACT US IF CRITICAL