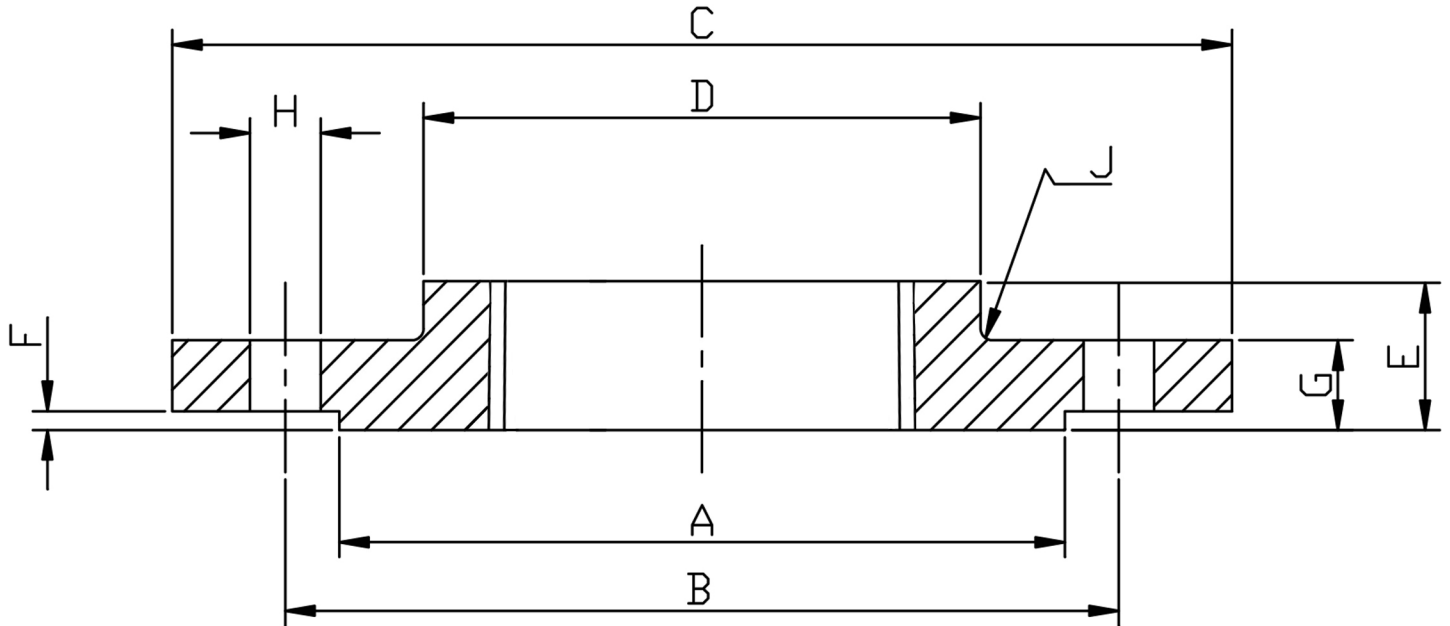


150 LB THREADED 316/L



PIPE SIZE	DN	PART No	A	B	C	D	E	F	G	H	J	Kg EACH
1/2	15	F150SP0.5	34.9	60.3	88.9	30.2	15.9	1.6	11.1	4X15.9	3	0.4
3/4	20	F150SP0.75	42.9	69.8	98.4	38.1	15.9	1.6	12.7	4X15.9	3	0.7
1	25	F150SP1.0	50.8	79.4	107.9	49.2	17.5	1.6	14.3	4X15.9	3	0.9
1 1/4	32	F150SP1.25	63.5	88.9	117.5	58.7	20.6	1.6	15.9	4X15.9	3	1.2
1 1/2	40	F150SP1.5	73.0	98.4	127.0	65.1	22.2	1.6	17.5	4X15.9	3	1.5
2	50	F150SP2.0	92.1	120.6	152.4	77.8	25.4	1.6	19.0	4X19.0	3	2.3
2 1/2	65	F150SP2.5	104.8	139.7	177.8	90.5	28.6	1.6	22.2	4X19.0	3	3.7
3	80	F150SP3.0	127.0	152.4	190.5	107.9	30.2	1.6	23.8	4X19.0	3	4.2
4	100	F150SP4.0	157.2	190.5	228.6	134.9	33.3	1.6	23.8	8X19.0	3	5.9

BSPP THREADED AS STANDARD, BSPT OR NPT AVAILABLE

\*ASTM A182 316/L STAINLESS STEEL  
 \* TO ANSI/ASME B16.5  
 \*DIMENSIONS IN MM  
 \*WEIGHTS IN Kg EACH  
 \*THREADED BSPP TO ISO 228-1

\*\*DIMENSIONS SUBJECT TO CHANGE, PLEASE CONTACT US IF CRITICAL\*\*