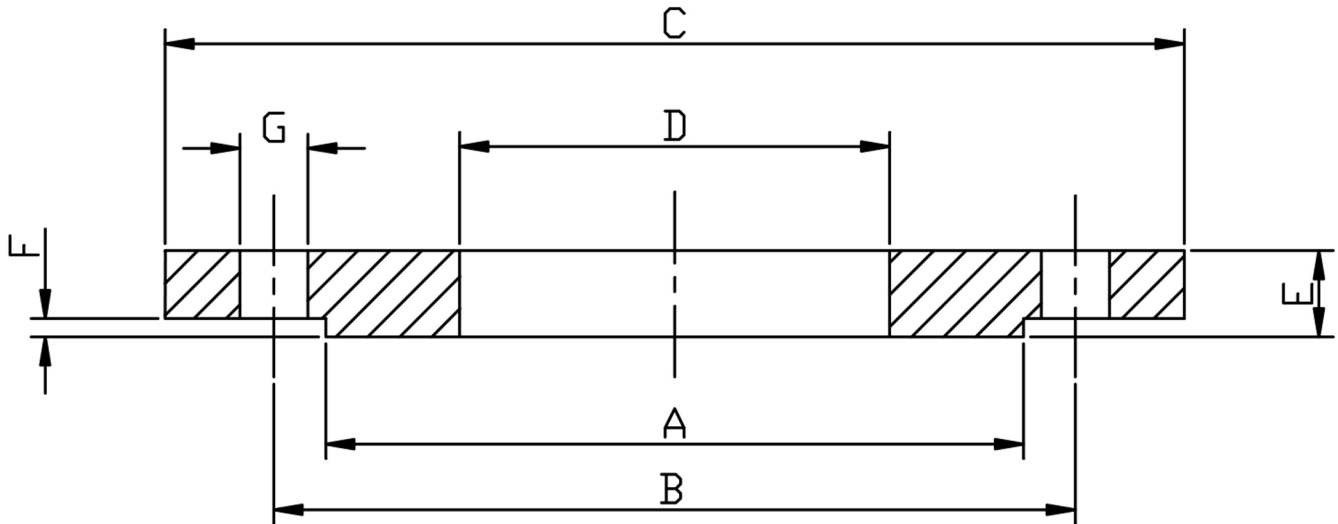


### PN16/3 SLIP-ON TYPE 01B, 316/L AND 304/L



PIPE SIZE	DN	PART No 316/L	PART No 304/L	A	B	C	D	E	F	G	BOLT SIZES	Kg EACH
1/2	15	F1630.5	F1630.5-304	45	65	95	22.0	14	3	14	4XM12	0.68
3/4	20	F1630.75	F1630.75-304	58	75	105	27.5	16	3	14	4XM12	0.94
1	25	F1631.0	F1631.0-304	68	85	115	34.5	16	3	14	4XM12	1.11
1 1/4	32	F1631.25	F1631.25-304	78	100	140	43.5	16	3	18	4XM16	1.62
1 1/2	40	F1631.5	F1631.5-304	88	110	150	49.5	16	3	18	4XM16	1.86
2	50	F1632.0	F1632.0-304	102	125	165	61.5	18	3	18	4XM16	2.47
2 1/2	65	F1632.5	F1632.5-304	122	145	185	74.7	18	3	18	4XM16	3.00
3	80	F1633.0	F1633.0-304	138	160	200	90.5	20	3	18	8XM16	3.79
4	100	F1634.0	F1634.0-304	158	180	220	116.0	20	3	18	8XM16	4.03
5	125	F1635.0	F1635.0-304	188	210	250	143.8	22	3	18	8XM16	5.46
6	150	F1636.0	F1636.0-304	212	240	285	170.5	24	3	22	8XM20	6.57
8	200	F1638.0	F1638.0-304	268	295	340	221.5	26	3	22	12XM20	9.70
10	250	F16310.0	F16310.0-304	320	355	405	276.4	29	3	26	12XM24	14.3

\*ASTM A182 316/L AND 304/L  
 \*TO EN1092-1 (WAS BS4504)  
 \*DIMENSIONS IN MM  
 \*WEIGHTS IN Kg EACH

\*\*DIMENSIONS SUBJECT TO CHANGE, PLEASE CONTACT US IF CRITICAL\*\*