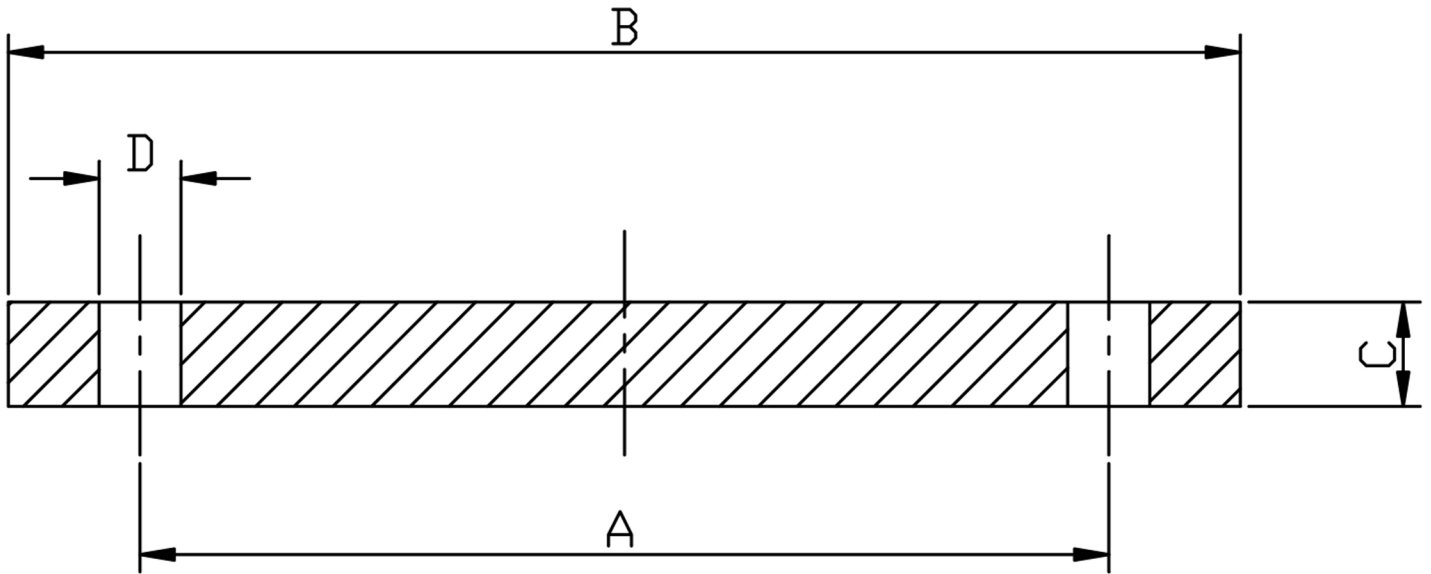


TABLE E BLIND 316/L



PIPE SIZE	DN	PART No 316/L	A	B	C	D	BOLT SIZES	Kg EACH
1/2	15	FEB0.5	66.68	95.25	6.35	14.29	4XM12	0.62
3/4	20	FEB0.75	73.03	101.60	6.35	14.29	4XM12	0.98
1	25	FEB1.0	82.55	114.30	7.14	14.29	4XM12	1.07
1 1/4	32	FEB1.25	87.31	120.65	7.94	14.29	4XM12	1.52
1 1/2	40	FEB1.5	98.43	133.35	8.73	14.29	4XM12	1.79
2	50	FEB2.0	114.30	152.40	9.53	17.46	4XM16	2.31
2 1/2	65	FEB2.5	127.00	165.10	10.32	17.46	4XM16	3.03
3	80	FEB3.0	146.05	184.15	11.11	17.46	4XM16	3.60
4	100	FEB4.0	177.80	215.90	12.70	17.46	8XM16	3.83
5	125	FEB5.0	209.55	254.00	14.29	17.46	8XM16	4.50
6	150	FEB6.0	234.95	279.40	17.46	22.23	8XM20	5.50
8	200	FEB8.0	292.10	336.55	19.05	22.23	8XM20	6.84

*ASTM A182 316/L STAINLESS STEEL
 * TO BS10
 *DIMENSIONS IN MM
 *WEIGHTS IN Kg EACH

DIMENSIONS SUBJECT TO CHANGE, PLEASE CONTACT US IF CRITICAL