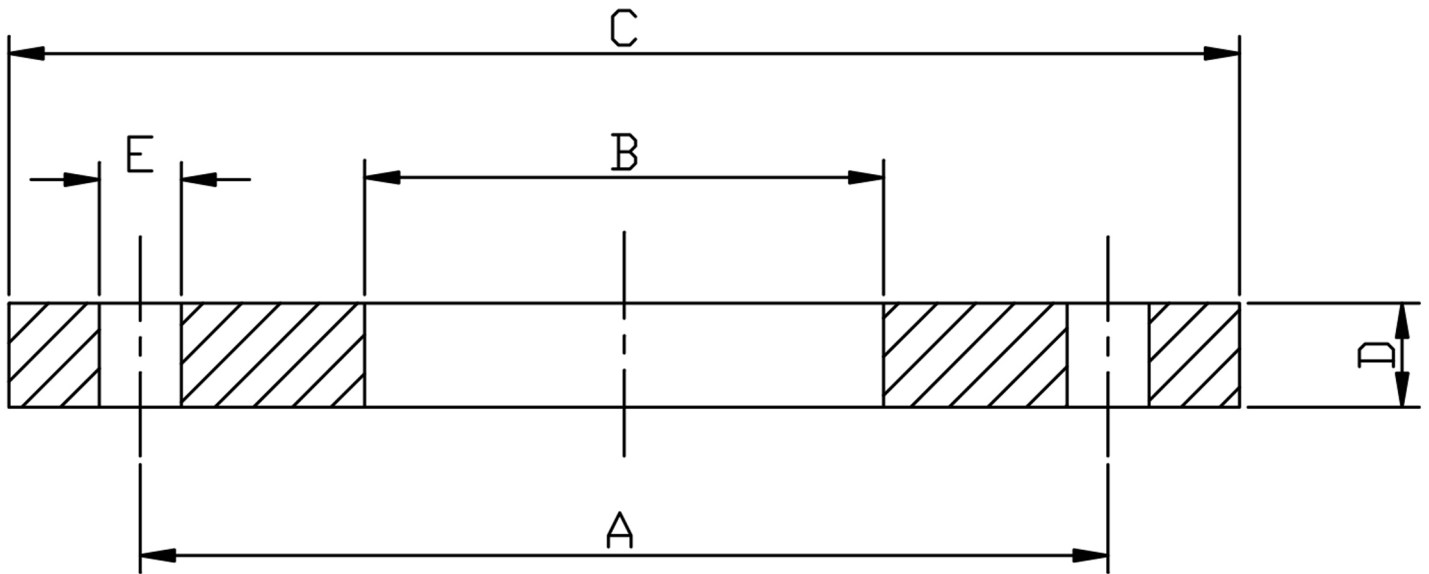


TABLE E SLIP-ON 316/L



PIPE SIZE	DN	PART No 316/L	A	B	C	D	E	BOLT SIZES	Kg EACH
1/2	15	FES0.5	66.68	22.35	95.25	6.35	14.29	4XM12	0.34
3/4	20	FES0.75	73.03	27.69	101.60	6.35	14.29	4XM12	0.36
1	25	FES1.0	82.55	34.54	114.30	7.14	14.29	4XM12	0.50
1 1/4	32	FES1.25	87.31	43.18	120.65	7.94	14.29	4XM12	0.64
1 1/2	40	FES1.5	98.43	49.53	133.35	8.73	14.29	4XM12	1.00
2	50	FES2.0	114.30	61.98	152.40	9.53	17.46	4XM16	1.14
2 1/2	65	FES2.5	127.00	74.68	165.10	10.32	17.46	4XM16	1.44
3	80	FES3.0	146.05	90.68	184.15	11.11	17.46	4XM16	1.84
4	100	FES4.0	177.80	116.08	215.90	12.70	17.46	8XM16	2.53
5	125	FES5.0	209.55	143.76	254.00	14.29	17.46	8XM16	3.00
6	150	FES6.0	234.95	170.69	279.40	17.46	22.23	8XM20	4.00
8	200	FES8.0	292.10	221.48	336.55	19.05	22.23	8XM20	4.87

*ASTM A182 316/L STAINLESS STEEL
 * TO BS10
 *DIMENSIONS IN MM
 *WEIGHTS IN Kg EACH

DIMENSIONS SUBJECT TO CHANGE, PLEASE CONTACT US IF CRITICAL