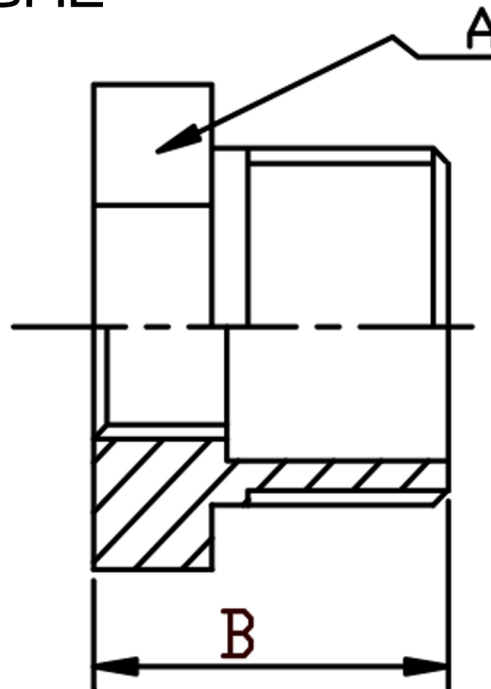




# HYDRAULIC MEGASTORE



SIZE	PART No	A	B	Kg/100
1/4 x 1/8	RB0402N	14.5	14.5	1.21
3/8 X 1/8	RB0602N	18	16	1.93
3/8 X 1/4	RB0604N	18	16	1.86
1/2 X 1/8	RB0802N	21.4	19.5	3.31
1/2 X 1/4	RB0804N	21.4	19.5	3.25
1/2 X 3/8	RB0806N	21.4	19.5	2.94
3/4 X 1/4	RB1204N	27	21	5.74
3/4 X 3/8	RB1206N	27	21	5.25
3/4 X 1/2	RB1208N	27	21	5.13
1 X 1/2	RB1608N	33.9	24	9.44
1X 3/4	RB1612N	33.9	24	8.52
1-1/4 X 3/4	RB2012N	42.7	27	15.43
1-1/4 X 1	RB2016N	42.7	27	12.09
1-1/2 X 3/4	RB2412N	48.6	27	20.55
1-1/2 X 1	RB2416N	48.6	27	18.84
1-1/2 X 1-1/4	RB2420N	48.6	27	13.84
2 X 3/4	RB3212N	60.5	31	26.84
2 X 1	RB3216N	60.5	31	30.3
2 X 1-1/4	RB3220N	60.5	31	31.46
2 X 1-1/2	RB3224N	60.5	31	30.68
2-1/2 X 1-1/2	RB4024N	78	34	56.63
2-1/2 X 2	RB4032N	78	34	46.3
3 X 2	RB4832N	91	38	79.25
3 X 2-1/2	RB4840N	91	38	57.78
4 X 2	RB6432N	116	44	125.34
4 X 2-1/2	RB6440N	116	44	142.04
4 X 3	RB6448N	116	44	129.06

\*Pressure rating up to 20 BAR (300 PSI)

\*Threads are NPT to ANSI B2.1

\*316 CF8M stainless steel

\*Investment castings

\*Sizes 1/8" to 4"