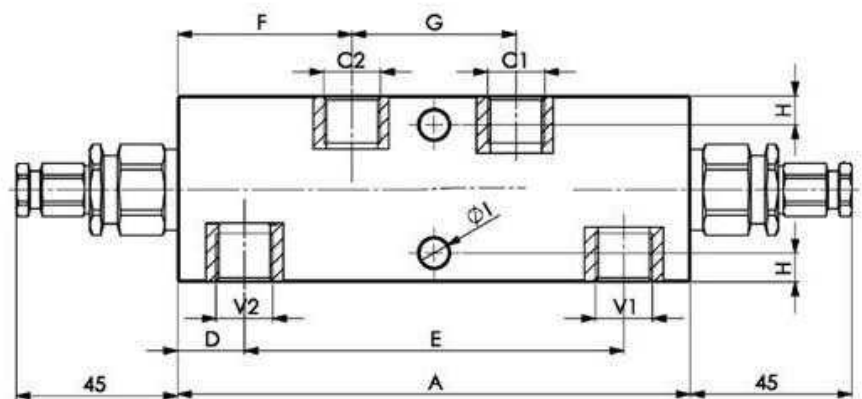
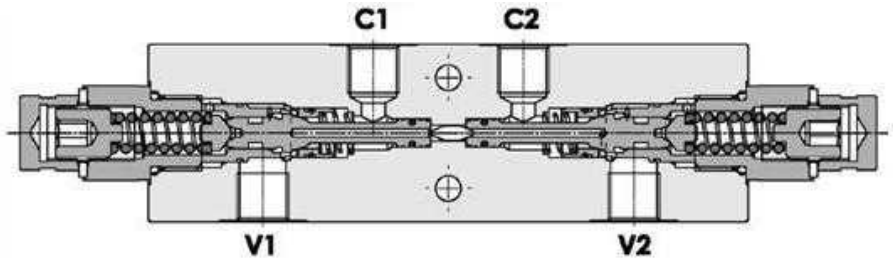
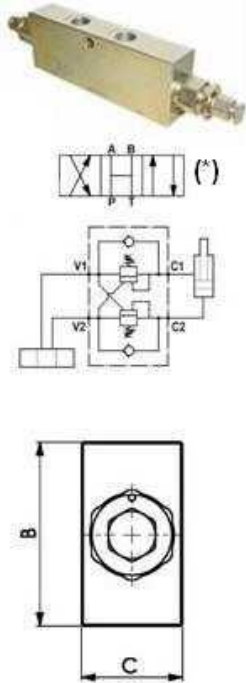


Hydraulic valves

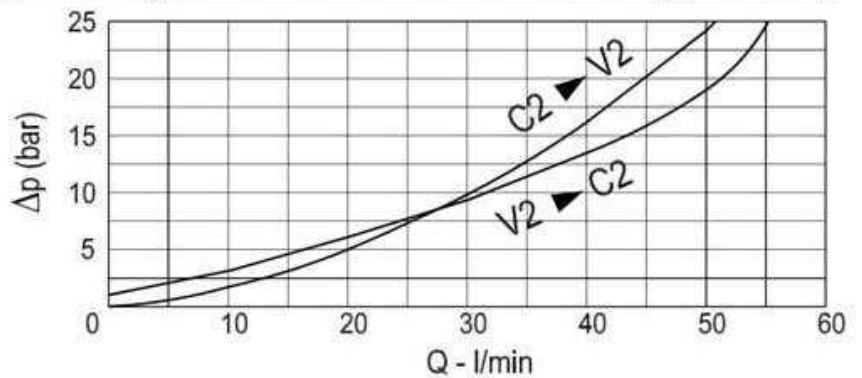
Overcenter valves

Double acting overcenter (in line)

Page: 1/1



Pressure drop curves Diagrama de pérdida de presión



R1=C1, C2, V1, V2

Pilot ratio: 1: 4,25 (1 : 8 and 1 : 11 on request)

Material: Body is steel made zinc plated.

Max. flow: 50 l/min.

Max.press: 350 bar

Adjustement means: Leakproof screw adjustement

Assembly: with control valve with this spool (*)

Part nº	R1	Max. flow (l/min)	Max. Press. (bar)	Setting (bar)	Reg. rate (bar)	Press. increase (bar/turn)	ØI	A	B	C	D	E	F	G	H
VT0120063535	3/8" BSP	35	350	280	80 - 350	120	8,5	150	55	30	19	112	51	48	8,5
VT0120085035	1/2" BSP	50	350	280	80 - 350	120	8,5	150	65	35	19	112	51	48	11