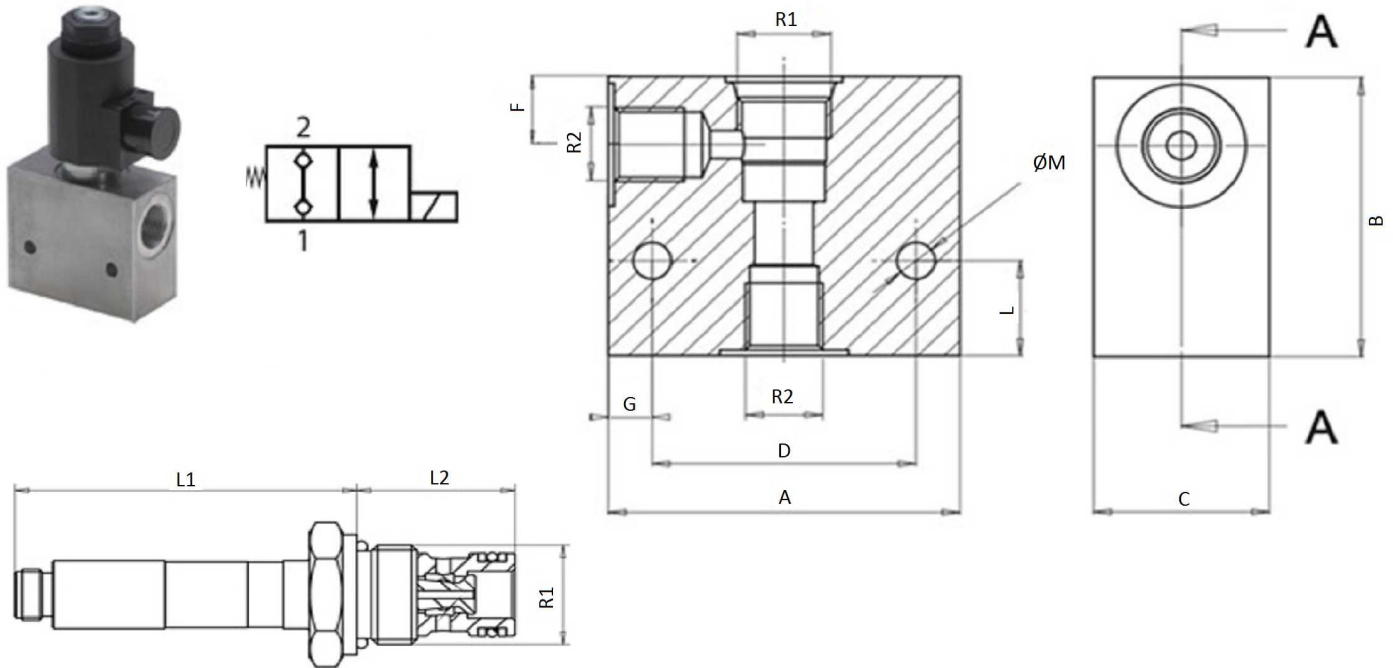


Hydraulic valves

Hydraulic valves with electric drive

Normally closed 2 ways valve with double check valve

Page: 1/1



Materials: body in aluminium

Part n°	R1	R2	Voltage (V)	Max. flow (l/min)	Max. Press. (bar)	L1	L2	ØM	A	B	C	D	F	G	L
VCFDA3812NC	3/4"-16UNF-2A	3/8" BSP	12CC	20	250	59,4	21,6	6,5	60	50	30	45	14	7,5	15
VCFDA3824NC	3/4"-16UNF-2A	3/8" BSP	24CC	20	250	59,4	21,6	6,5	60	50	30	45	14	7,5	15
VCFDA38220NC	3/4"-16UNF-2A	3/8" BSP	220VDC	20	250	59,4	21,6	6,5	60	50	30	45	14	7,5	15
VCFDA1212NC	7/8"-14 UNF-2A	1/2" BSP	12CC	30	220	72,9	32	6,5	60	50	30	45	17,5	7,5	15
VCFDA1224NC	7/8"-14UNF-2A	1/2" BSP	24CC	30	220	72,9	32	6,5	60	50	30	45	17,5	7,5	15
VCFDA12220NC	7/8"-14UNF-2A	1/2" BSP	220VDC	30	220	72,9	32	6,5	60	50	30	45	17,5	7,5	15