

# HM HYDRAULIC CYLINDERS

DOUBLE / SINGLE\* ACTING HYDRAULIC CYLINDER (\*=S/A WITH USE OF A BREATHER)

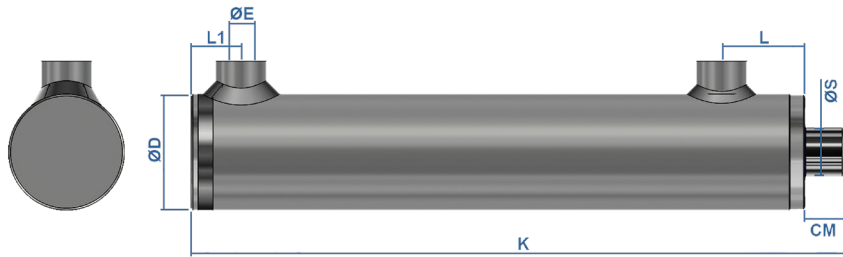
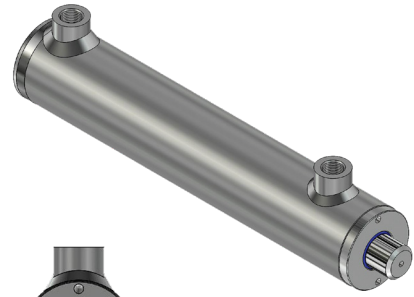
MAX PRESSURE = 210 BAR (CONTINUOUS) ► 250 BAR (INTERMITTENT)

MAX SPEED = 0.5 M/S

OPERATING TEMPERATURE (°C) = +80°C TO -25°C

TUBE MATERIAL = STEEL - ST52.3 - DIN2393 - ISO H9

ROD MATERIAL = STEEL - UNI C45 (SAE 1045) - 25 MICRON (±5) - EN8 GRADE

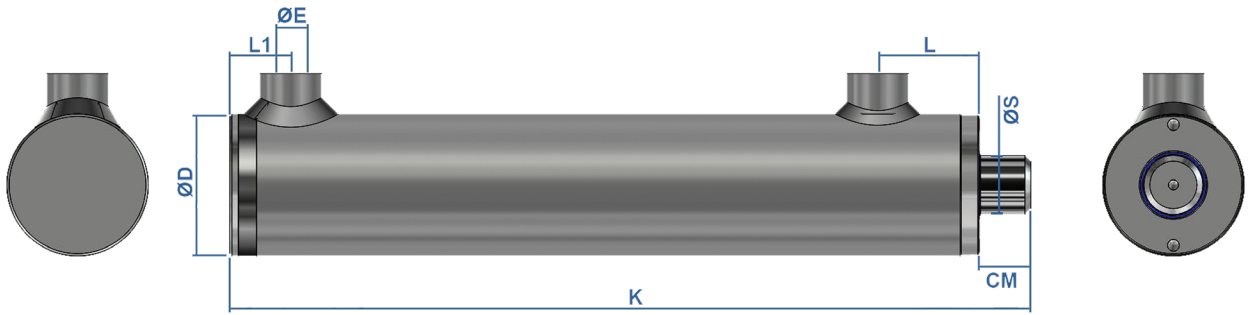


ORDER CODE	BORE Ø(mm)	D Ø(mm)	S Ø(mm)	K (mm)	STROKE (mm)	E Ø(bsp)	L (mm)	L1 (mm)	CM (mm)	WEIGHT (kgs)
HM0025160050	25	35	16	135	50	1/4"	33	15	17	0.7
HM0025160100				185	100					1.0
HM0025160150				235	150					1.3
HM0025160200				285	200					1.5
HM0032200050	32	42	20	155	50	1/4"	33	20	16	1.3
HM0032200100				205	100					1.6
HM0032200150				255	150					2.0
HM0032200200				305	200					2.3
HM0032200250				355	250					2.7
HM0032200300				405	300					3.0
HM0032200400				505	400					3.7
HM0032200500				605	500					4.4
HM01200100	40	50	20	230	100	1/4"	40	23	22	2.3
HM01200150				280	150					2.7
HM01200200				330	200					3.1
HM01200250				380	250					6.5
HM01200300				430	300					6.9
HM01200350				480	350					4.3
HM01200400				530	400					4.7
HM01200450				580	450					5.1
HM01200500				630	500					5.5
HM01250100				40	50					25
HM01250150	280	150	3.0							
HM01250200	330	200	3.4							
HM01250250	380	250	3.9							
HM01250300	430	300	4.3							
HM01250350	480	350	4.8							
HM01250400	530	400	5.3							
HM01250450	580	450	5.8							
HM01250500	630	500	6.2							
HM01250550	680	550	6.6							
HM01250600	730	600	7.2							
HM02250100	50	60	25	240	100	3/8"	43	26	22	3.3
HM02250150				290	150					3.8
HM02250200				340	200					4.4
HM02250250				390	250					4.9
HM02250300				440	300					5.4
HM02250350				490	350					6.0
HM02250400				540	400					6.4

# HM HYDRAULIC CYLINDERS

ORDER CODE	BORE Ø(mm)	D Ø(mm)	S Ø(mm)	K (mm)	STROKE (mm)	E Ø(bsp)	L (mm)	L1 (mm)	CM (mm)	WEIGHT (kgs)
HM02250450	50	60	25	590	450	3/8"	43	26	22	7.3
HM02250500				640	500					7.4
HM02250550				690	550					8.1
HM02250600				740	600					8.5
<b>NEW!</b> HM02250700				840	700					9.7
HM02250800				940	800					10.7
HM02251000				1140	1000					12.9
<b>NEW!</b> HM02300100	50	60	30	240	100	3/8"	43	26	22	3.6
HM02300150				290	150					4.1
HM02300200				340	200					4.8
HM02300250				390	250					5.4
HM02300300				440	300					6.0
HM02300350				490	350					6.6
HM02300400				540	400					7.2
HM02300450				590	450					7.8
HM02300500				640	500					8.5
HM02300550				690	550					9.1
HM02300600				740	600					9.7
HM02300700				840	700					10.8
HM02300800				940	800					12.1
HM02301000				1140	1000					14.6
HM03300100	60	70	30	260	100	3/8"	50	30	23	4.8
HM03300150				310	150					5.6
HM03300200				360	200					6.1
HM03300250				410	250					6.9
HM03300300				460	300					7.6
HM03300350				510	350					8.2
HM03300400				560	400					8.9
HM03300450				610	450					9.6
HM03300500				660	500					10.3
HM03300550				710	550					10.9
HM03300600				760	600					11.6
<b>NEW!</b> HM03300700				860	700					13.0
HM03300800				960	800					14.3
HM03301000				1160	1000					17.0
HM03350100	60	70	35	260	100	3/8"	50	30	23	5.1
HM03350150				310	150					5.9
HM03350200				360	200					6.6
HM03350250				410	250					7.4
HM03350300				460	300					8.2
HM03350350				510	350					9.0
HM03350400				560	400					9.8
HM03350450				610	450					10.5
HM03350500				660	500					11.3
HM03350550				710	550					12.0
HM03350600				760	600					12.8
<b>NEW!</b> HM03350700				860	700					14.5
HM03350800				960	800					15.8
HM03351000				1160	1000					18.9
HM03400200	60	70	40	360	200	3/8"	50	30	23	7.3
HM03400250				410	250					8.2
HM03400300				460	300					9.1

# HM HYDRAULIC CYLINDERS



ORDER CODE	BORE Ø(mm)	D Ø(mm)	S Ø(mm)	K (mm)	STROKE (mm)	E Ø(bsp)	L (mm)	L1 (mm)	CM (mm)	WEIGHT (kgs)
HM03400350	60	70	40	510	350	3/8"	50	30	23	9.9
HM03400400				560	400					10.8
HM03400450				610	450					11.7
HM03400500				660	500					12.5
HM03400550				710	550					13.5
HM03400600				760	600					14.3
<b>NEW!</b> HM03400700				860	700					16.2
HM03400800				960	800					17.8
HM03401000				1160	1000					21.4
HM063400200				63	73					40
HM063400250	410	250	8.5							
HM063400300	460	300	9.4							
HM063400350*	510	350	10.3							
HM063400400	560	400	11.2							
HM063400450*	610	450	12.1							
HM063400500	660	500	13.0							
HM063400550*	710	550	13.9							
HM063400600	760	600	14.8							
<b>NEW!</b> HM063400700	860	700	16.7							
HM063400800	960	800	18.5							
HM063401000	1160	1000	22.1							
HM04350100	70	80	35	260	100	3/8"	50	33	23	6.1
HM04350150				310	150					7.0
HM04350200				360	200					7.8
HM04350250				410	250					8.6
HM04350300				460	300					9.4
HM04350350				510	350					10.3
HM04350400				560	400					11.0
HM04350450				610	450					11.9
HM04350500				660	500					12.6
HM04350550				710	550					13.7
HM04350600	760	600	14.2							
<b>NEW!</b> HM04350700	860	700	16.2							
HM04350800	960	800	17.6							
HM04351000	1160	1000	21.3							
<b>NEW!</b> HM04400100	70	80	40	260	100	3/8"	50	33	23	6.5
<b>NEW!</b> HM04400150				310	150					7.4
HM04400200				360	200					8.3
HM04400250				410	250					9.3
HM04400300				460	300					10.3
HM04400350				510	350					11.2
HM04400400				560	400					12.8

# HM HYDRAULIC CYLINDERS

ORDER CODE	BORE Ø(mm)	D Ø(mm)	S Ø(mm)	K (mm)	STROKE (mm)	E Ø(bsp)	L (mm)	L1 (mm)	CM (mm)	WEIGHT (kgs)
HM04400450	70	80	40	610	450	3/8"	50	33	23	13.2
HM04400500				660	500					14.0
HM04400550				710	550					15.1
HM04400600				760	600					16.0
<b>NEW!</b> HM04400700				860	700					17.9
HM04400800				960	800					19.8
HM04401000				1160	1000					23.5
HM05400200	80	92	40	380	200	1/2"	60	35	25	11.1
HM05400250				430	250					12.2
HM05400300				480	300					13.3
HM05400400				580	400					15.6
HM05400500				680	500					17.8
HM05400600				780	600					20.0
<b>NEW!</b> HM05400700				880	700					22.5
HM05400800	980	800	24.5							
HM05401000	1180	1000	29.0							
HM05500200	80	92	50	380	200	1/2"	60	35	25	12.4
HM05500250				430	250					13.8
HM05500300				480	300					15.2
HM05500400				580	400					18.0
HM05500500				680	500					20.8
HM05500600				780	600					24.0
<b>NEW!</b> HM05500700				880	700					26.5
HM05500800	980	800	30.0							
HM05501000	1180	1000	35.0							
HM0090500300	90	105	50	486	300	1/2"	60	40	23	19.3
HM0090500400				586	400					22.7
HM0090500500				686	500					26.0
HM0090500600				786	600					29.3
<b>NEW!</b> HM0090500700				886	700					32.6
HM0090500800				986	800					36.0
HM0090501000				1186	1000					42.7
HM06500200	100	115	50	410	200	1/2"	82	38	25	19.5
HM06500250				460	250					21.5
HM06500300				510	300					23.0
HM06500400				610	400					26.5
HM06500500				710	500					30.0
HM06500600				810	600					33.5
<b>NEW!</b> HM06500700				910	700					37.2
HM06500800	1010	800	40.5							
HM06501000	1210	1000	47.5							
HM06600300	100	115	60	510	300	1/2"	82	38	25	25.5
HM06600400				610	400					29.5
HM06600500				710	500					33.5
HM06600600				810	600					37.5
<b>NEW!</b> HM06600700				910	700					42.1
HM06600800				1010	800					46.0
HM06601000				1210	1000					54.5