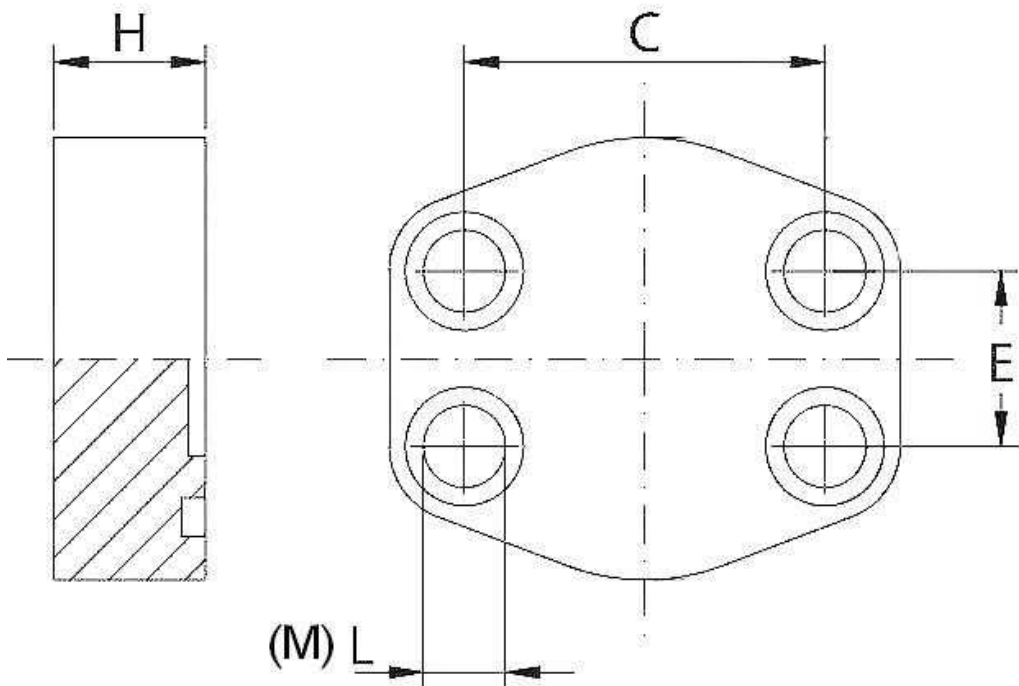


Blind flanges

Stainless Steel AISI 316-L



Part nº	Serie	Size	O'Ring	C	E	H	L	M
ZBBC308	3000 PSI	1/2"	4075	38,1	17,48	16	9	M8x30
ZBBC312	3000 PSI	3/4"	4100	47,63	22,23	18	11	M10x35
ZBBC316	3000 PSI	1"	4131	52,37	26,19	19	11	M10x35
ZBBC320	3000 PSI	1"1/4	4150	58,72	30,18	18	11,5	M10x40
ZBBC324	3000 PSI	1"1/2	4187	69,85	35,71	20	13,5	M12x45
ZBBC332	3000 PSI	2"	4225	77,77	42,88	20	13,5	M12x45
ZBBC340	3000 PSI	2"1/2	4275	88,9	50,8	20	13,5	M12x45
ZBBC348	3000 PSI	3"	4337	106,38	61,93	24	17,5	M16x50
ZBBC356	3000 PSI	3"1/2	4387	120,65	69,85	22	17,5	M16x50
ZBBC364	3000 PSI	4"	4437	130,18	77,77	25	17,5	M16x50
ZBBC608	6000 PSI	1/2"	4075	40,49	18,24	16	9	M8x30
ZBBC612	6000 PSI	3/4"	4100	50,8	23,8	19	11	M10x35
ZBBC616	6000 PSI	1"	4131	57,15	27,76	24	13	M12x45
ZBBC620	6000 PSI	1"1/4	4150	66,68	31,75	27	15 *	M14x45
ZBBC624	6000 PSI	1"1/2	4187	79,38	36,5	30	17	M16x50
ZBBC632	6000 PSI	2"	4225	96,82	44,45	30	21	M20x60