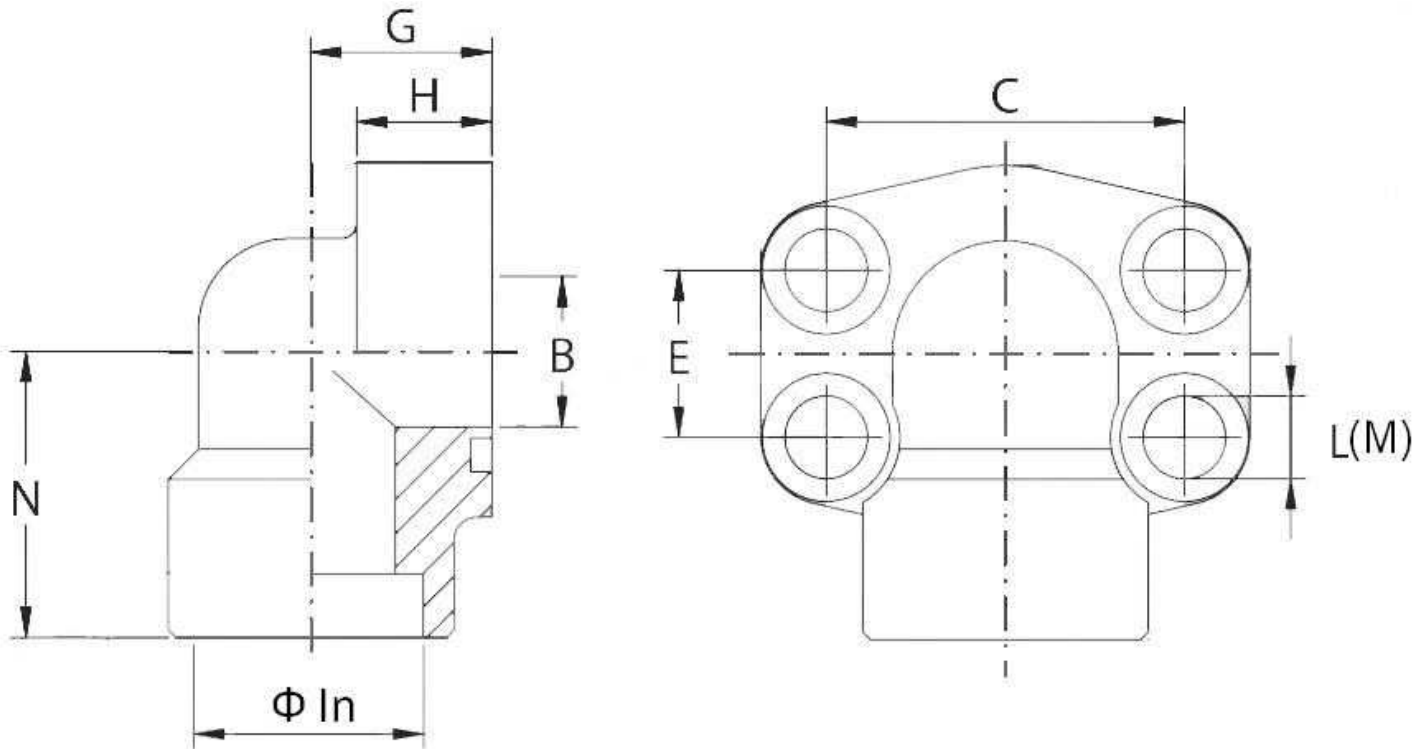


## 90° welding female flange for gas tube

Stainless Steel AISI 316-L



Part nº	Serie	Ø in	Size	O'Ring	B	C	E	G	H	L	M	N
<b>ZB90SG308216</b>	3000 PSI	21.6	1/2"	4075	13	38,1	17,48	20	16	9	M8x30	37
<b>ZB90SG312272</b>	3000 PSI	27.2	3/4"	4100	19	47,63	22,23	24	18	11	M10x35	38
<b>ZB90SG316340</b>	3000 PSI	34.0	1"	4131	25	52,37	26,19	28	19	11	M10x35	43
<b>ZB90SG320428</b>	3000 PSI	42.8	1"1/4	4150	32	58,72	30,18	34	21	11,5	M10x40	51
<b>ZB90SG324486</b>	3000 PSI	48.6	1"1/2	4187	38	69,85	35,71	38	25	13,5	M12x45	56
<b>ZB90SG332610</b>	3000 PSI	61.0	2"	4225	51	77,77	42,88	42	25	13,5	M12x45	65
<b>ZB90SG608216</b>	6000 PSI	21.6	1/2"	4075	13	40,49	18,24	20	16	9	M8x30	37
<b>ZB90SG616340</b>	6000 PSI	34.0	1"	4131	25	57,15	27,76	34	21	13	M12x45	51
<b>ZB90SG620428</b>	6000 PSI	42.8	1"1/4	4150	32	66,68	31,75	38	25	15 *	M14x45	56
<b>ZB90SG624486</b>	6000 PSI	48.6	1"1/2	4187	38	79,38	36,5	42	25	17	M16x50	65