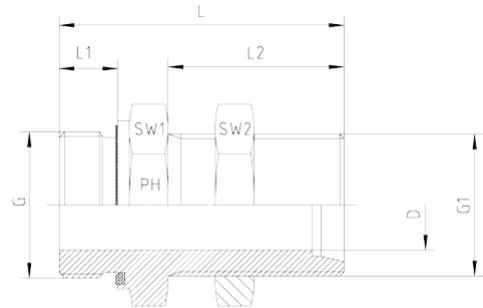
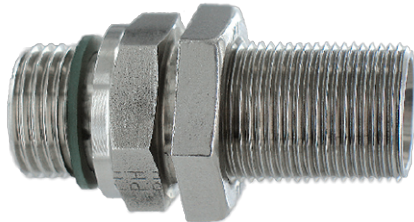


**Rubrik 5.59
Straight Bulkhead Adaptors**


BSP - Metric
 Straight Bulkhead connection for Compression Couplings
 DIN
 2353 / DIN EN ISO 8434-1 with 24°-Cone and backnut
 Male-Stud Thread: BSP - Parallel
 Sealing by an Elastomer Profiled Ring - Viton

Pressure	Tube O.D.	Thread		Approx. Dimensions						Order-Code
		G = BSP	G1 = Metric	L	L1	L2	D	SW1	SW2	
500	6	1/4"-19	M 12 x 1,5	53,0	12	34	4	19	17	1050509-04-06-L
500	8	1/4"-19	M 14 x 1,5	53,0	12	34	6	19	19	1050509-04-08-L
500	10	1/4"-19	M 16 x 1,5	57,0	12	35	7	19	22	1050509-04-10-L
500	8	3/8"-19	M 14 x 1,5	56,0	12	34	6	22	19	1050509-06-08-L
500	10	3/8"-19	M 16 x 1,5	55,5	12	35	8	22	22	1050509-06-10-L
400	12	3/8"-19	M 18 x 1,5	56,5	12	36	10	24	24	1050509-06-12-L
630	12	3/8"-19	M 20 x 1,5	62,0	12	38	8	27	27	1050509-06-12-S
400	15	3/8"-19	M 22 x 1,5	58,0	12	38	10	27	30	1050509-06-15-L
500	10	1/2"-14	M 16 x 1,5	58,0	14	35	8	27	22	1050509-08-10-L
400	12	1/2"-14	M 18 x 1,5	60,0	14	36	10	27	24	1050509-08-12-L
630	12	1/2"-14	M 20 x 1,5	63,0	14	38	8	27	27	1050509-08-12-S
400	15	1/2"-14	M 22 x 1,5	62,0	14	38	12	27	30	1050509-08-15-L
630	16	1/2"-14	M 24 x 1,5	64,0	14	39	12	27	32	1050509-08-16-S
400	18	1/2"-14	M 26 x 1,5	63,0	14	40	15	32	36	1050509-08-18-L
400	15	3/4"-14	M 22 x 1,5	64,0	16	38	12	32	30	1050509-12-15-L
630	16	3/4"-14	M 24 x 1,5	69,0	16	40	12	32	32	1050509-12-16-S
400	18	3/4"-14	M 26 x 1,5	66,0	16	40	15	32	36	1050509-12-18-L
250	22	3/4"-14	M 30 x 2	68,0	16	42	18	36	41	1050509-12-22-L
400	18	1"-11	M 26 x 1,5	69,0	18	40	15	41	36	1050509-16-18-L
420	20	1"-11	M 30 x 2	73,0	18	44	16	41	41	1050509-16-20-S
250	22	1"-11	M 30 x 2	73,0	18	42	19	41	41	1050509-16-22-L
420	25	1"-11	M 36 x 2	81,5	18	47	19	46	46	1050509-16-25-S
250	28	1"-11	M 36 x 2	72,0	18	43	24	41	46	1050509-16-28-L
420	30	1 1/4"-11	M 42 x 2	88,0	20	51	25	50	50	1050509-20-30-S
250	42	1 1/2"-11	M 52 x 2	86,0	22	47	36	60	65	1050509-24-42-L