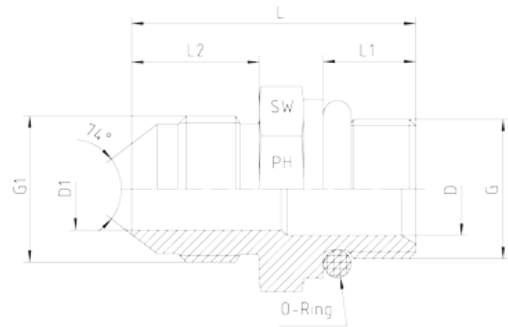
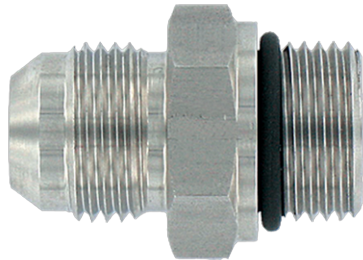




**Rubrik 6.14
JIC - Male - SAE J 514**



JIC - Male
 Thread: UNF (ASA B 1.1 - 1960)
 Sealing by O-ring in Thread Undercut - SAE J 514
 Note: A special part shape must be machined.

Pressure PN	Tube O.D.		Thread		Approx. Dimensions						Order-Code
	mm	in.	G1 = UNF/UN	G = UNF/UN	L	L1	L2	D	D1	SW	
350	6	1/4"	7/16"-20	7/16"-20	31,0	9,2	14,0	4,5	4,5	17	1052511-04-04
350	8	5/16"	1/2"-20	1/2"-20	31,0	9,2	14,0	6,0	6,0	17	1052511-05-05
350	8	5/16"	1/2"-20	9/16"-18	33,0	10,0	14,0	5,0	5,0	19	1052511-05-06
350	10	3/8"	9/16"-18	9/16"-18	33,0	10,0	14,0	7,5	7,5	19	1052511-06-06
350	10	3/8"	9/16"-18	3/4"-16	35,5	11,0	14,0	9,5	7,5	24	1052511-06-08
350	12	1/2"	3/4"-16	3/4"-16	38,0	11,0	17,0	9,5	9,5	24	1052511-08-08
350	12	1/2"	3/4"-16	7/8"-14	40,0	12,7	17,0	12,0	9,5	27	1052511-08-10
350	14, 15, 16	5/8"	7/8"-14	3/4"-16	42,0	11,0	19,5	9,5	12,5	27	1052511-10-08
350	14, 15, 16	5/8"	7/8"-14	7/8"-14	43,0	12,7	19,5	12,0	12,0	27	1052511-10-10
350	14, 15, 16	5/8"	7/8"-14	1 1/16"-12	47,0	15,0	19,5	15,0	12,0	32	1052511-10-12
350	18, 20	3/4"	1 1/16"-12	1 1/16"-12	50,0	15,0	22,0	15,0	15,0	32	1052511-12-12
350	18, 20	3/4"	1 1/16"-12	1 5/16"-12	51,0	15,0	22,0	21,5	15,0	41	1052511-12-16
280	25	1"	1 5/16"-12	1 5/16"-12	52,0	15,0	23,0	21,5	21,5	41	1052511-16-16
210	28, 30, 32	1 1/4"	1 5/8"-12	1 5/8"-12	53,0	15,0	24,3	27,5	27,5	50	1052511-20-20
210	35, 38	1 1/2"	1 7/8"-12	1 7/8"-12	56,5	15,0	27,5	33,0	33,0	55	1052511-24-24