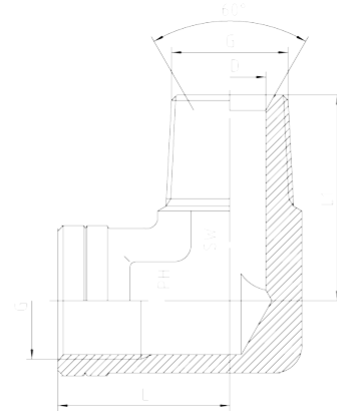


Rubrik 5.38


Male - NPT with 60°-Cone - Female - NPT

Pressure	Thread		Approx. Dimensions				Order-Code
	PN	G = NPT	L	L1	D	SW	
420		1/8"-27	20,0	22,0	5,0	17	1350512-02
420		1/4"-18	22,5	30,0	7,0	19	1350512-04
420		3/8"-18	26,3	32,0	10,0	24	1350512-06
420		1/2"-14	31,0	37,0	14,0	27	1350512-08
420		3/4"-14	33,5	43,0	18,0	36	1350512-12
420		1"-11,5	43,0	50,0	24,0	41	1350512-16
315		1 1/4"-11,5	51,0	56,0	30,0	50	1350512-20
315		1 1/2"-11,5	53,0	67,0	36,0	65	1350512-24