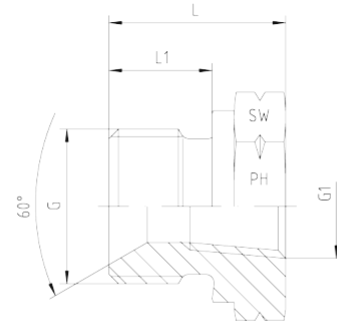
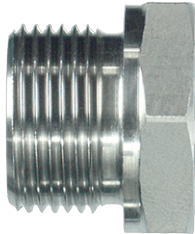


**Rubrik 5.49
BSP - Male - NPT - Female - Form A**


BSP - Male with 60°-Cone
NPT - Female

Pressure	Thread		Approx. Dimensions				Form	Order-Code	
	PN	G = BSP	G1 = NPT	L	L1	D			SW
400		1/2"-14	1/4"-18	24,0	14	11,5	27	A	1050518-08-04
400		1/2"-14	3/8"-18	32,5	14	12,0	27	A	1050518-08-06
400		3/4"-14	3/8"-18	30,0	16	14,5	32	A	1050518-12-06
400		1"-11	1/2"-14	31,0	18	18,0	41	A	1050518-16-08
400		1"-11	3/4"-14	32,0	18	23,0	41	A	1050518-16-12
200		1 1/4"-11	3/4"-14	37,0	20	22,5	50	A	1050518-20-12
200		1 1/4"-11	1"-11,5	37,0	20	33,0	50	A	1050518-20-16
200		1 1/2"-11	1"-11,5	39,0	22	28,5	55	A	1050518-24-16
200		1 1/2"-11	1 1/4"-11,5	39,0	22	37,0	55	A	1050518-24-20