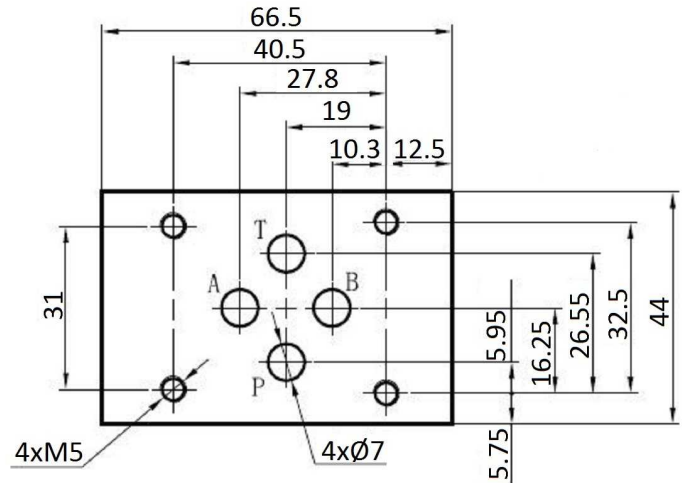
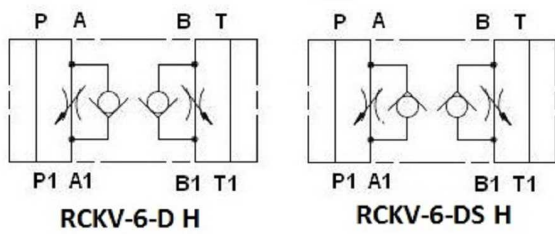


Solenoid valves

Modular blocks for NG6

NG6 Flow control valve



Operating Pressure 315 bar

Flow Rate 80 l/min

4 Screw Set Included M5x85

Length=142 mm, Height=28,6 mm

Cast iron body

Part n°	Size	Details
RCKV-6-D H	NG-6	Flow controlled at the entrance
RCKV-6-DS H	NG-6	Flow controlled in exit