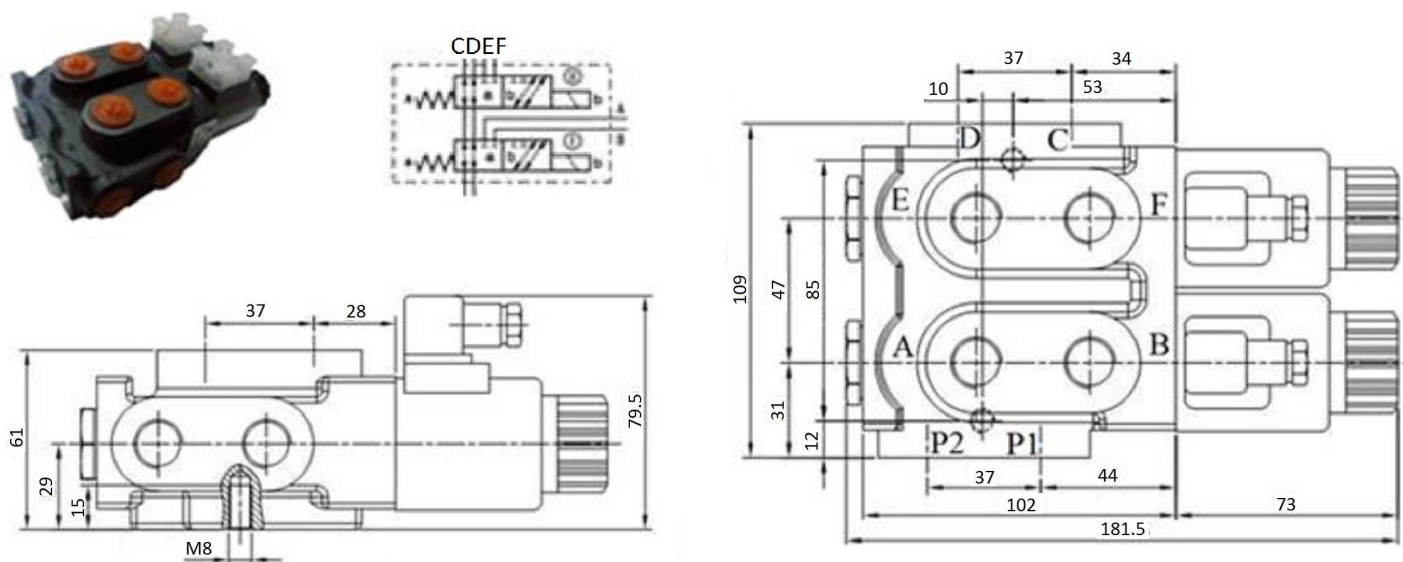


Diverter valves

Monoblock diverter valve, 8 ways 3/8 DC

Page: 1/1



Material: Body is molten made

Part nº	R1	Nº ways	Voltage (V)	Max. flow (l/min)	Max. Press. (bar)
SM8V3812CC	3/8" BSP	8	12 VDC	50	250
SM8V3824CC	3/8" BSP	8	24 VDC	50	250