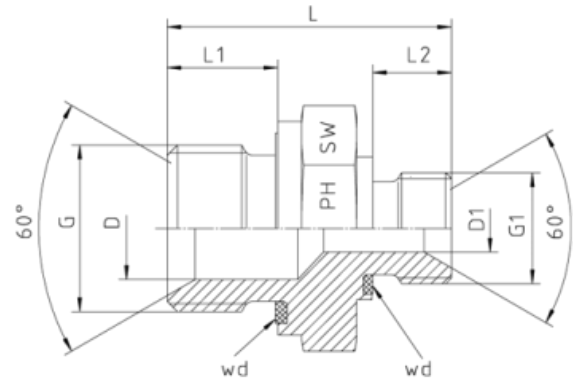
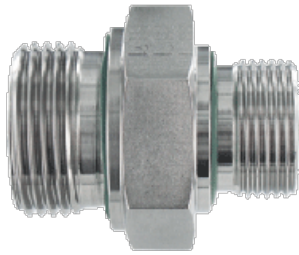


Rubrik 5.11

BSP - Parallel - Reduced - 60°-Cone with Soft Sealing



BSP - BSP

With 60°-Cone

wd = Sealing by an Elastomer Profiled Ring - Viton

Male - Male - Parallel

Pressure	Thread		Approx. Dimensions						Order-Code	Gross- Price (€)
	G = BSP	G1 = BSP	L	L1	L2	D	D1	SW		
400	1/4"-19	1/8"-28	28,0	12,0	8	6,0	4,5	19	1050508-04-02	8,75
400	3/8"-19	1/8"-28	30,5	12,0	8	9,0	4,5	22	1050508-06-02	12,10
400	3/8"-19	1/4"-19	33,0	12,0	10	9,0	6,0	22	1050508-06-04	10,90
400	1/2"-14	1/4"-19	38,0	14,0	11	12,5	7,0	27	1050508-08-04	14,85
400	1/2"-14	3/8"-19	40,0	14,0	12	13,0	9,0	27	1050508-08-06	14,85
400	3/4"-14	1/4"-19	39,5	16,0	10	18,0	6,0	32	1050508-12-04	29,70
400	3/4"-14	3/8"-19	41,0	16,0	12	18,0	9,0	32	1050508-12-06	25,30
400	3/4"-14	1/2"-14	45,0	16,0	14	18,0	13,0	32	1050508-12-08	23,30
400	1"-11	3/8"-19	47,0	18,0	12	23,0	9,0	41	1050508-16-06	41,80
400	1"-11	1/2"-14	48,0	18,0	14	23,5	13,0	41	1050508-16-08	40,70
400	1"-11	3/4"-14	53,0	18,0	16	23,5	17,0	41	1050508-16-12	39,60
200	1 1/4"-11	1/2"-14	51,0	20,0	14	30,0	13,0	50	1050508-20-08	62,70
200	1 1/4"-11	3/4"-14	53,5	20,0	16	30,5	18,0	50	1050508-20-12	61,60
200	1 1/4"-11	1"-11	58,0	20,0	18	30,5	23,0	50	1050508-20-16	60,50
200	1 1/2"-11	3/4"-14	55,0	22,0	16	37,0	17,0	55	1050508-24-12	97,90

200	1 1/2"-11	1"-11	57,0	22,0	18	37,0	23,5	55	1050508-24-16	95,70
200	1 1/2"-11	1 1/4"-11	61,0	22,0	20	37,0	30,0	55	1050508-24-20	94,60
100	2"-11	1"-11	62,0	25,0	18	43,0	23,5	70	1050508-32-16	176,00
100	2"-11	1 1/4"-11	62,0	25,0	20	45,0	30,0	70	1050508-32-20	176,00
100	2"-11	1 1/2"-11	64,0	25,0	22	45,0	37,0	70	1050508-32-24	176,00