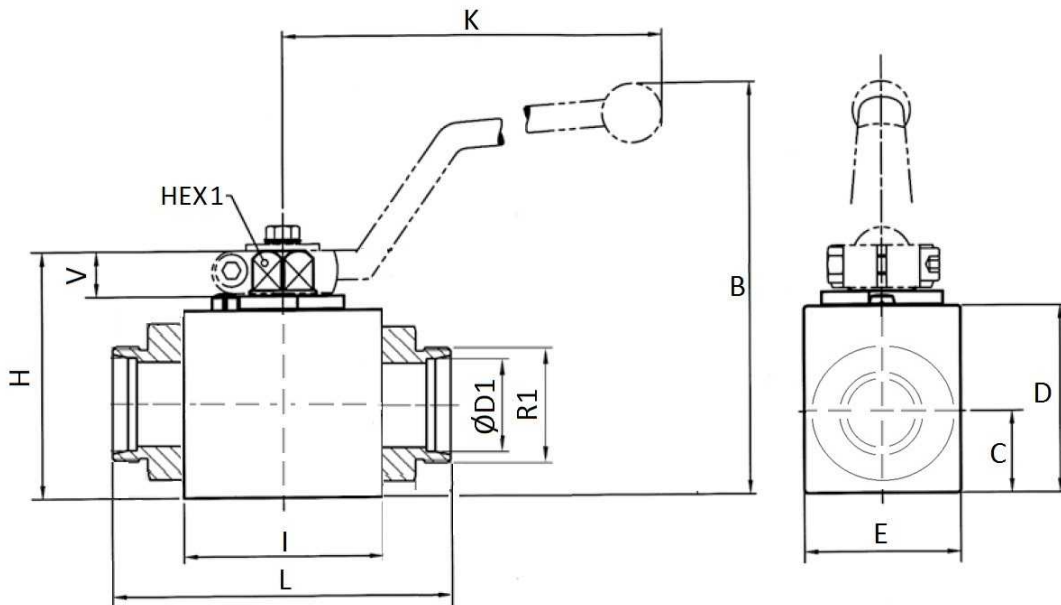


2 Ways ball valve: tube connection Heavy Serie



Standard o-ring: NBR

Ball seat: POM
(polyoxymethylene)

Part n°	DN	ØD1	R1	MAX. PRESSURE (bar)	HEX 1	A	B	C	D	E	H	I	K	L	V
GB2V 8 S	4	8S	M16x1.5	500	9	-	82	13,5	33	26	47	40	115	73	11
GB2V 10 S	6	10S	M18x1.5	500	9	-	82	13,5	33	26	47	40	115	73	11
GB2V 12 S	8	12S	M20x1.5	500	9	-	82	13,5	33	26	47	40	115	76	11
GB2V 16 S	13	16S	M24x1.5	500	9	-	89	19	40	35	54	48	115	86	11
GB2V 20 S	16	20S	M30x2	400	9	-	89	19	40	35	54	48	115	90	11
GB2V 25 S	20	25S	M36x2	315	14	79	-	24,5	57	49	75	62	200	109	14
GB2V 30 S	25	30S	M42x2	315	14	87	-	29,5	65	58	83	66	200	120	14