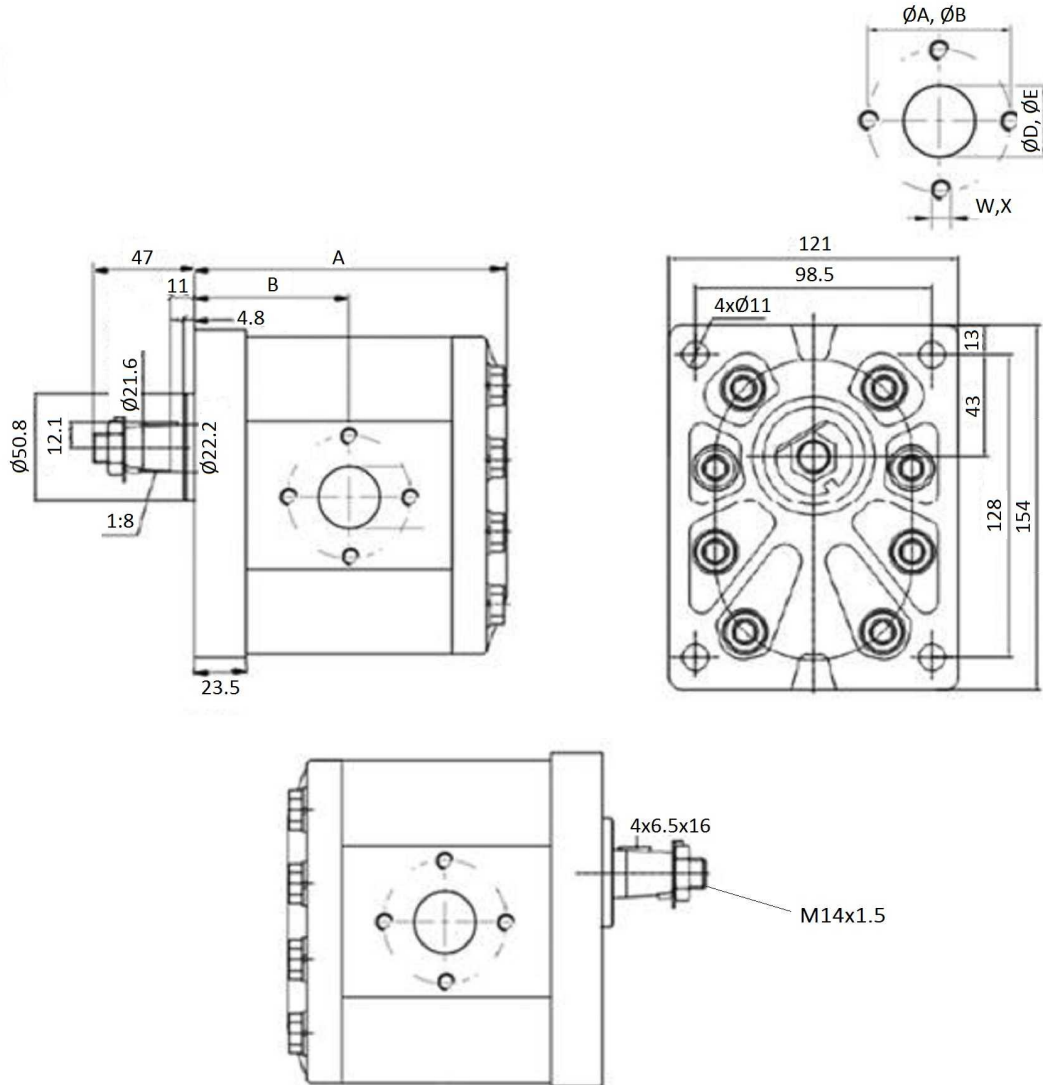


Gear pumps

Gear pumps Group III Right

## Gr.III Gear pump/Eur.flange/Tapered shaft 1:8 /Side ports type Eur.

Page: 1/2



**Air intake and pressure:** - From 22 to 28 cm<sup>3</sup>: W = M8; X = M8. - From 34 to 55 cm<sup>3</sup>: W = M10; X = M8

**Rotation reference:** BTD...I = Left; BTD...D = Right

Min 400 rpm

**Flange and cover:** Cast iron

Part n°	Ø ASPIRATION (mm)	Ø PRESSURE (mm)	Max. Press. (bar)	Max. Peak press.	R.P.M.	cm <sup>3</sup> / rev	ØA	ØB	ØD	ØE	A	B
BTD3220D02	40	40	200	250	3000	22 CC	40	40	27	19	128,5	65,5
BTD3260D02	40	40	200	250	3000	26 CC	40	40	27	19	131,5	67
BTD3280D02	40	40	200	250	3000	28 CC	40	40	27	19	134	68,5
BTD3340D02	50	40	200	250	3000	34 CC	50	40	27	19	137	69,8
BTD3390D02	50	40	200	250	3000	39 CC	50	40	27	19	141	71,8
BTD3430D02	50	40	200	250	2800	43 CC	50	40	27	27	143,5	73
BTD3460D02	50	40	200	250	2400	46 CC	50	40	27	27	146,5	74

Gear pumps

Gear pumps Group III Right

## Gr.III Gear pump/Eur.flange/Tapered shaft 1:8 /Side ports type Eur.

Page: 2/2

Part n°	Ø ASPIRATION (mm)	Ø PRESSURE (mm)	Max. Press. (bar)	Max. Peak press.	R.P.M.	cm <sup>3</sup> /rev	ØA	ØB	ØD	ØE	A	B
<b>BTD3510D02</b>	50	40	200	250	2400	51 CC	50	40	27	27	149,5	76
<b>BTD3550D02</b>	50	40	200	250	2400	55 CC	50	40	27	27	152	78

ØA, ØD, W = Inlet  
ØB, ØE, X = Outlet