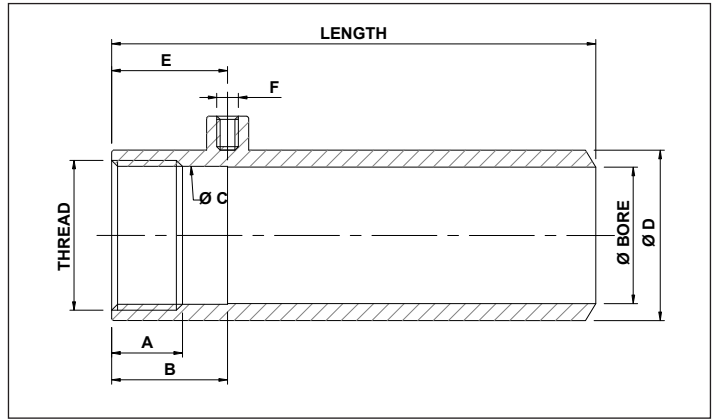


STANDARD THREADED CYLINDER TUBES



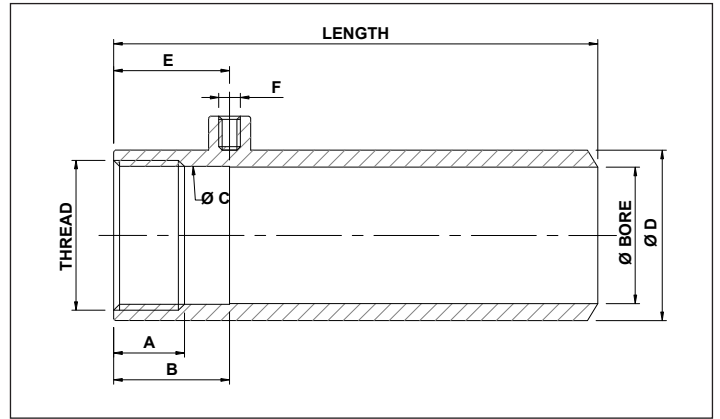
STANDARD TUBE	CYLINDER BORE	STROKE
ST	50	200

PART NUMBER	CYLINDER BORE	STROKE	LENGTH	A	B	Ø C	Ø D	E	F	THREAD
ST50200	50	200	302	24	37	50.6	60	37	3/8"BSP	54 x 1.5
ST50250	50	250	352	24	37	50.6	60	37	3/8"BSP	54 x 1.5
ST50300	50	300	402	24	37	50.6	60	37	3/8"BSP	54 x 1.5
ST50400	50	400	502	24	37	50.6	60	37	3/8"BSP	54 x 1.5
ST50500	50	500	602	24	37	50.6	60	37	3/8"BSP	54 x 1.5
ST50600	50	600	702	24	37	50.6	60	37	3/8"BSP	54 x 1.5
ST50800	50	800	902	24	37	50.6	60	37	3/8"BSP	54 x 1.5
ST501000	50	1000	1102	24	37	50.6	60	37	3/8"BSP	54 x 1.5
ST501500	50	1500	1602	24	37	50.6	60	37	3/8"BSP	54 x 1.5
ST55250	55	250	362	24	37	55.6	65	37	3/8"BSP	60 x 1.5
ST55300	55	300	412	24	37	55.6	65	37	3/8"BSP	60 x 1.5
ST55500	55	500	612	24	37	55.6	65	37	3/8"BSP	60 x 1.5
ST55600	55	600	712	24	37	55.6	65	37	3/8"BSP	60 x 1.5
ST55800	55	800	912	24	37	55.6	65	37	3/8"BSP	60 x 1.5
ST60100	60	100	217	29	42	60.6	70	45	3/8"BSP	64 x 1.5
ST60150	60	150	267	29	42	60.6	70	45	3/8"BSP	64 x 1.5
ST60200	60	200	317	29	42	60.6	70	45	3/8"BSP	64 x 1.5
ST60250	60	250	367	29	42	60.6	70	45	3/8"BSP	64 x 1.5
ST60300	60	300	417	29	42	60.6	70	45	3/8"BSP	64 x 1.5
ST60400	60	400	517	29	42	60.6	70	45	3/8"BSP	64 x 1.5
ST60500	60	500	617	29	42	60.6	70	45	3/8"BSP	64 x 1.5
ST60600	60	600	717	29	42	60.6	70	45	3/8"BSP	64 x 1.5
ST60800	60	800	917	29	42	60.6	70	45	3/8"BSP	64 x 1.5
ST601000	60	1000	1117	29	42	60.6	70	45	3/8"BSP	64 x 1.5
ST601500	60	1500	1617	29	42	60.6	70	45	3/8"BSP	64 x 1.5
ST63200	63	200	317	29	42	63.6	73	45	3/8"BSP	68 x 1.5
ST63250	63	250	367	29	42	63.6	73	45	3/8"BSP	68 x 1.5
ST63300	63	300	417	29	42	63.6	73	45	3/8"BSP	68 x 1.5
ST63300-HD	63	300	417	29	42	63.6	78	45	3/8"BSP	68 x 1.5
ST63400	63	400	517	29	42	63.6	73	45	3/8"BSP	68 x 1.5

SMOOTH/HONED TUBE AVAILABLE IN UNMACHINED LENGTHS, CUT TO YOUR REQUIREMENTS

MATERIAL: STEEL E3555 (EN10305-2/ DIN 2393-St52.3)-ISO H8-H9 DOM & COLD DRAWN SEAMLESS TUBE
 MAXIMUM WORKING PRESSURE 250 BAR
 HD : DENOTES. THICKER WALL TUBE

STANDARD THREADED CYLINDER TUBES



STANDARD TUBE CYLINDER BORE STROKE
ST 63 500

PART NUMBER	CYLINDER BORE	STROKE	LENGTH	A	B	Ø C	Ø D	E	F	THREAD
ST63500	63	500	617	29	42	63.6	73	45	3/8"BSP	68 x 1.5
ST63500-HD	63	500	617	29	42	63.6	78	45	3/8"BSP	68 x 1.5
ST63600	63	600	717	29	42	63.6	73	45	3/8"BSP	68 x 1.5
ST63800	63	800	917	29	42	63.6	73	45	3/8"BSP	68 x 1.5
ST631000	63	1000	1117	29	42	63.6	73	45	3/8"BSP	68 x 1.5
ST631500	63	1500	1617	29	42	63.6	73	45	3/8"BSP	68 x 1.5
ST70200	70	200	317	29	42	70.6	80	45	3/8"BSP	74 x 1.5
ST70250	70	250	367	29	42	70.6	80	45	3/8"BSP	74 x 1.5
ST70300	70	300	417	29	42	70.6	80	45	3/8"BSP	74 x 1.5
ST70400	70	400	517	29	42	70.6	80	45	3/8"BSP	74 x 1.5
ST70500	70	500	617	29	42	70.6	80	45	3/8"BSP	74 x 1.5
ST70600	70	600	717	29	42	70.6	80	45	3/8"BSP	74 x 1.5
ST70800	70	800	917	29	42	70.6	80	45	3/8"BSP	74 x 1.5
ST701000	70	1000	1117	29	42	70.6	80	45	3/8"BSP	74 x 1.5
ST701500	70	1500	1617	29	42	70.6	80	45	3/8"BSP	74 x 1.5
ST75200-037 PORT	75	200	335	35	54	75.6	90	56	3/8" BSP	80 x 2
ST75300	75	300	435	35	54	75.6	90	56	1/2"BSP	80 x 2
ST75500-037 PORT	75	500	635	35	54	75.6	90	56	3/8"BSP	80 x 2
ST75500	75	500	635	35	54	75.6	90	56	1/2"BSP	80 x 2
ST75800	75	800	935	35	54	75.6	90	56	1/2"BSP	80 x 2
ST751000	75	1000	1135	35	54	75.6	90	56	1/2"BSP	80 x 2
ST751500	75	1500	1635	35	54	75.6	90	56	1/2"BSP	80 x 2
ST80200	80	200	330	35	52	80.6	95	56	1/2"BSP	85 x 2
ST80250	80	250	380	35	52	80.6	95	56	1/2"BSP	85 x 2
ST80300-037 PORT	80	300	430	35	52	80.6	95	56	3/8"BSP	85 x 2
ST80300	80	300	430	35	52	80.6	95	56	1/2"BSP	85 x 2
ST80400	80	400	530	35	52	80.6	95	56	1/2"BSP	85 x 2
ST80500	80	500	630	35	52	80.6	95	56	1/2"BSP	85 x 2
ST80600	80	600	730	35	52	80.6	95	56	1/2"BSP	85 x 2
ST80800	80	800	930	35	52	80.6	95	56	1/2"BSP	85 x 2
ST801000	80	1000	1130	35	52	80.6	95	56	1/2"BSP	85 x 2

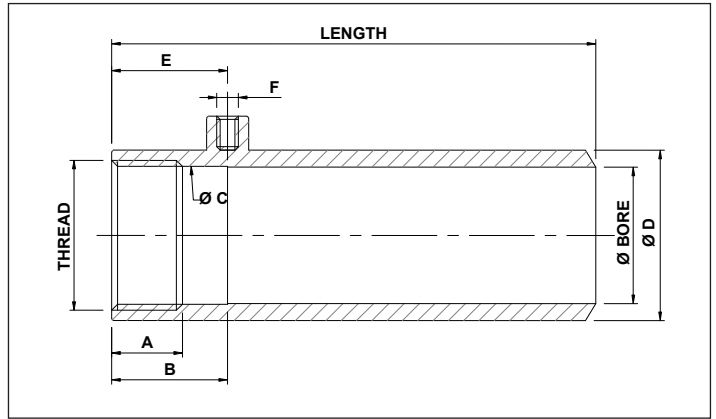
SMOOTH/HONED TUBE AVAILABLE IN UNMACHINED LENGTHS, CUT TO YOUR REQUIREMENTS

MATERIAL: STEEL E3555 (EN10305-2/ DIN 2393-St52.3)-ISO H8-H9 DOM & COLD DRAWN SEAMLESS TUBE

MAXIMUM WORKING PRESSURE 250 BAR

HD : DENOTES THICKER WALL TUBE

STANDARD THREADED CYLINDER TUBES



STANDARD TUBE CYLINDER BORE STROKE
 ST 80 1500

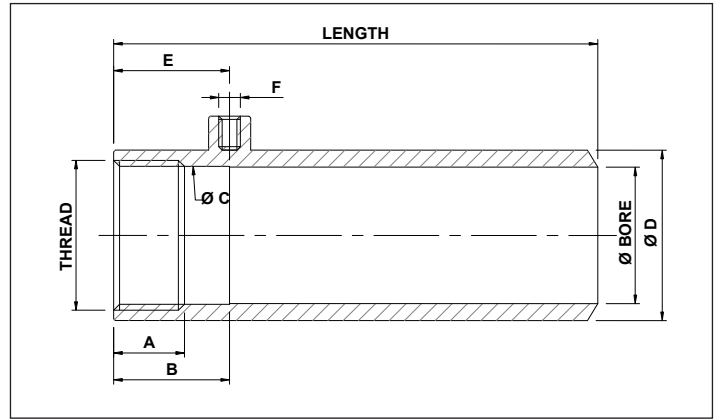
PART NUMBER	CYLINDER BORE	STROKE	LENGTH	A	B	Ø C	Ø D	E	F	THREAD
ST801500	80	1500	1630	35	52	80.6	95	56	1/2"BSP	85 x 2
ST90150	90	150	280	35	52	90.6	105	56	1/2"BSP	95 x 2
ST90200	90	200	330	35	52	90.6	105	56	1/2"BSP	95 x 2
ST90250	90	250	380	35	52	90.6	105	56	1/2"BSP	95 x 2
ST90300-037 PORT	90	300	430	35	52	90.6	105	56	3/8"BSP	95 x 2
ST90300	90	300	430	35	52	90.6	105	56	1/2"BSP	95 x 2
ST90400	90	400	530	35	52	90.6	105	56	1/2"BSP	95 x 2
ST90500	90	500	630	35	52	90.6	105	56	1/2"BSP	95 x 2
ST90600	90	600	730	35	52	90.6	105	56	1/2"BSP	95 x 2
ST90800	90	800	930	35	52	90.6	105	56	1/2"BSP	95 x 2
ST901000	90	1000	1130	35	52	90.6	105	56	1/2"BSP	95 x 2
ST901000L	90	1000	1140	35	52	90.6	105	56	1/2"BSP	95 x 2
ST901500	90	1500	1630	35	52	90.6	105	56	1/2"BSP	95 x 2
ST901500L	90	1500	1640	35	52	90.6	105	56	1/2"BSP	95 x 2
ST100200	100	200	340	35	52	100.6	115	56	1/2"BSP	105 x 2
ST100250	100	250	390	35	52	100.6	115	56	1/2"BSP	105 x 2
ST100300	100	300	440	35	52	100.6	115	56	1/2"BSP	105 x 2
ST100400	100	400	540	35	52	100.6	115	56	1/2"BSP	105 x 2
ST100500	100	500	640	35	52	100.6	115	56	1/2"BSP	105 x 2
ST100600	100	600	740	35	52	100.6	115	56	1/2"BSP	105 x 2
ST100800	100	800	940	35	52	100.6	115	56	1/2"BSP	105 x 2
ST1001000	100	1000	1140	35	52	100.6	115	56	1/2"BSP	105 x 2
ST1001500	100	1500	1640	35	52	100.6	115	56	1/2"BSP	105 x 2
ST100200XL	100	200	360	53	72	100.6	115	76	1/2"BSP	105 x 2
ST100250XL	100	250	410	53	72	100.6	115	76	1/2"BSP	105 x 2
ST100300XL	100	300	460	53	72	100.6	115	76	1/2"BSP	105 x 2
ST100400XL	100	400	560	53	72	100.6	115	76	1/2"BSP	105 x 2
ST100500XL	100	500	660	53	72	100.6	115	76	1/2"BSP	105 x 2
ST100600XL-037 PORT	100	600	760	53	72	100.6	115	76	3/8"BSP	105 x 2
ST100600XL	100	600	760	53	72	100.6	115	76	1/2"BSP	105 x 2
ST100800XL	100	800	960	53	72	100.6	115	76	1/2"BSP	105 x 2

SMOOTH/HONED TUBE AVAILABLE IN UNMACHINED LENGTHS, CUT TO YOUR REQUIREMENTS

MATERIAL: STEEL E3555 (EN10305-2/ DIN 2393-St52.3)-ISO H8-H9 DOM & COLD DRAWN SEAMLESS TUBE
 MAXIMUM WORKING PRESSURE 250 BAR

L : DENOTES LONG
 XL : DENOTES EXTRA LONG

STANDARD THREADED CYLINDER TUBES



STANDARD TUBE	CYLINDER BORE	STROKE	EXTRA LONG
ST	100	1000	XL

PART NUMBER	CYLINDER BORE	STROKE	LENGTH	A	B	Ø C	Ø D	E	F	THREAD
ST1001000XL	100	1000	1160	53	72	100.6	115	76	1/2"BSP	105 x 2
ST1001500XL	100	1500	1660	53	72	100.6	115	76	1/2"BSP	105 x 2
ST125300	125	300	478	58	82	125.6	145	86	1/2"BSP	130 x 2
ST125500	125	500	678	58	82	125.6	145	86	1/2"BSP	130 x 2
ST125800	125	800	978	58	82	125.6	145	86	1/2"BSP	130 x 2
ST1251000	125	1000	1178	58	82	125.6	145	86	1/2"BSP	130 x 2
ST1251500	125	1500	1678	58	82	125.6	145	86	1/2"BSP	130 x 2

SMOOTH/HONED TUBE AVAILABLE IN UNMACHINED LENGTHS, CUT TO YOUR REQUIREMENTS

MATERIAL: STEEL E3555 (EN10305-2/ DIN 2393-St52.3)-ISO H8-H9 DOM & COLD DRAWN SEAMLESS TUBE

MAXIMUM WORKING PRESSURE 250 BAR

L : DENOTES LONG

XL : DENOTES EXTRA LONG