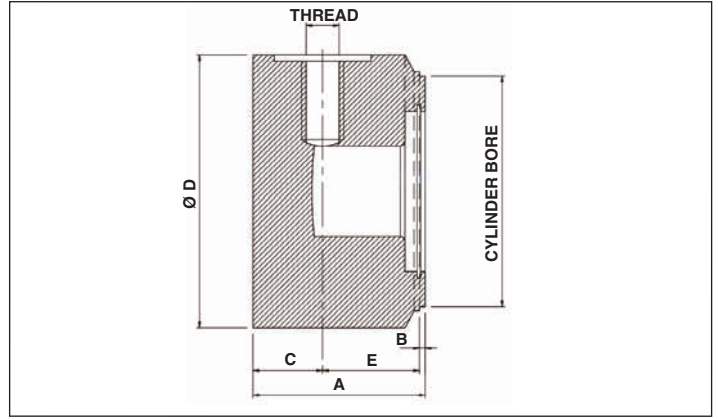


END CAPS FOR CUSHIONING



END CAP
EC

CYLINDER BORE
50

LENGTH A
50

CUSHIONING
CUSH

PART NUMBER	CYLINDER BORE	A	B	C	Ø D	E	BSP THREAD
EC4050-CUSH	40	50	2	20	50	28	1/4"
EC5050-CUSH	50	50	2	20	60	28	3/8"
EC6050-CUSH	60	50	2	20	70	28	3/8"
EC6350-CUSH	63	50	2	20	73	28	3/8"
EC7050-CUSH	70	50	2	20	80	28	3/8"
EC8050-CUSH	80	50	2	20	95	28	1/2"
EC10050-CUSH	100	50	2	20	115	28	1/2"

MATERIAL : STEEL 11SMn30 OR EQUIVALENT