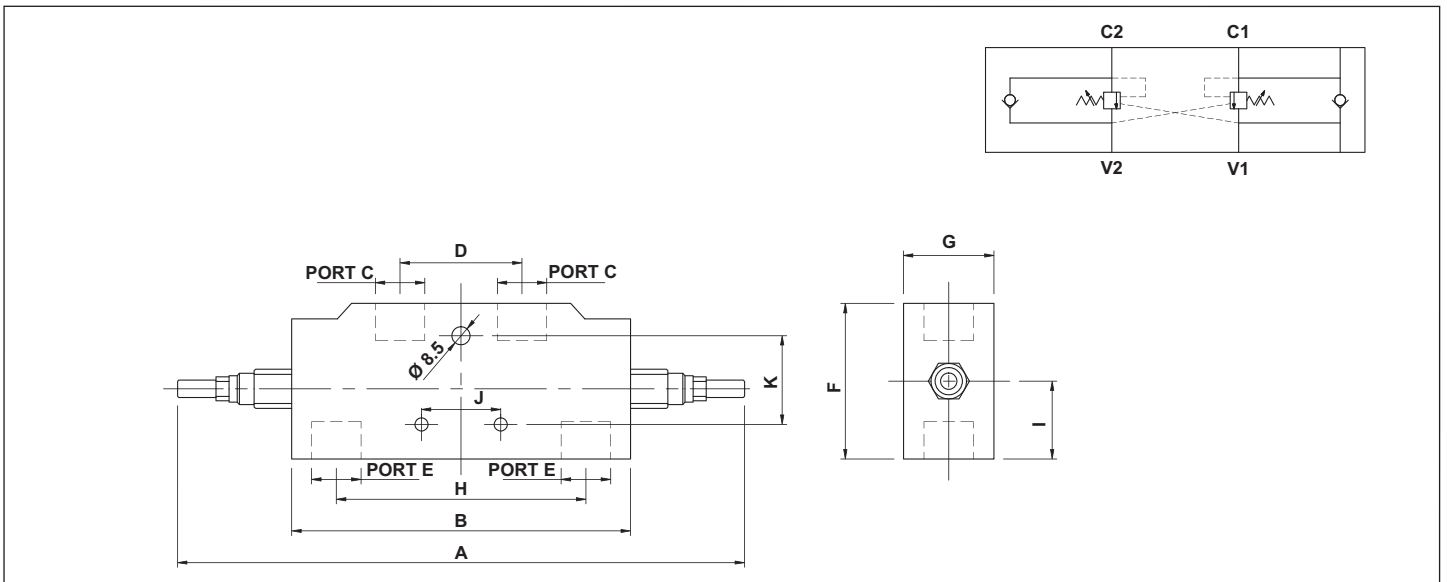
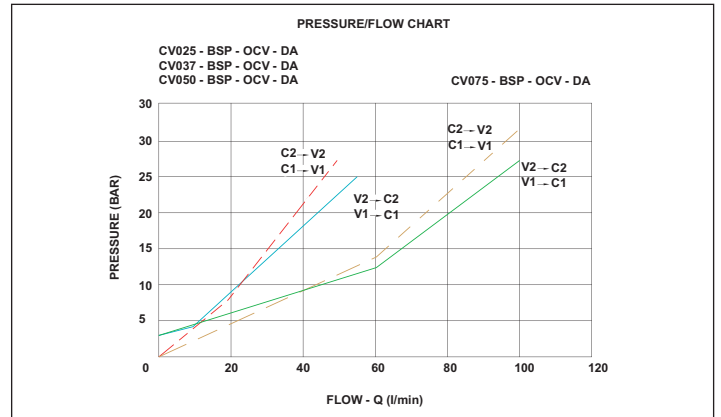
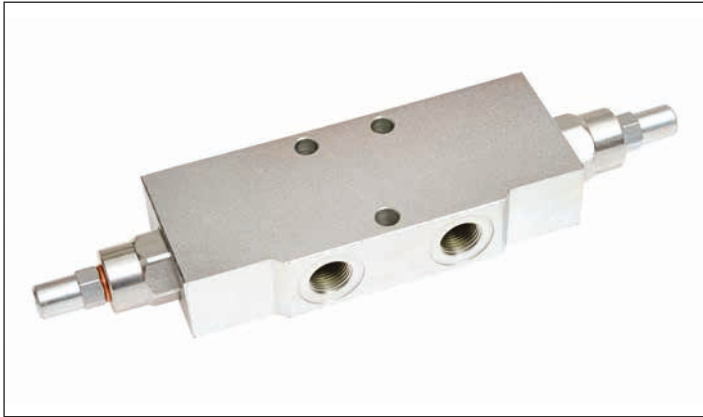


DOUBLE ACTING OVERCENTRE VALVES



CHECK VALVE CV	PORT SIZE 025	THREAD BSP	OVERCENTRE VALVE OCV	DOUBLE ACTING DA
-------------------	------------------	---------------	-------------------------	---------------------

PART NUMBER	L/MIN	MAX PRESSURE BAR	PILOT RATIO	A	B	(BSP) PORT C	D	(BSP) PORT E	F	G	H	I	J	K
CV025-BSP-OCV-DA	20	350	1:4.5	248	150	1/4"	50	1/4"	60	30	110	32	30	44
CV037-BSP-OCV-DA	40	350	1:4.5	248	150	3/8"	50	3/8"	60	30	110	32	30	44
CV050-BSP-OCV-DA	60	350	1:4.5	248	150	1/2"	50	1/2"	60	30	110	32	30	44
CV075-BSP-OCV-DA	95	350	1:5.5	304	190	3/4"	65	3/4"	80	35	143	40	44	64

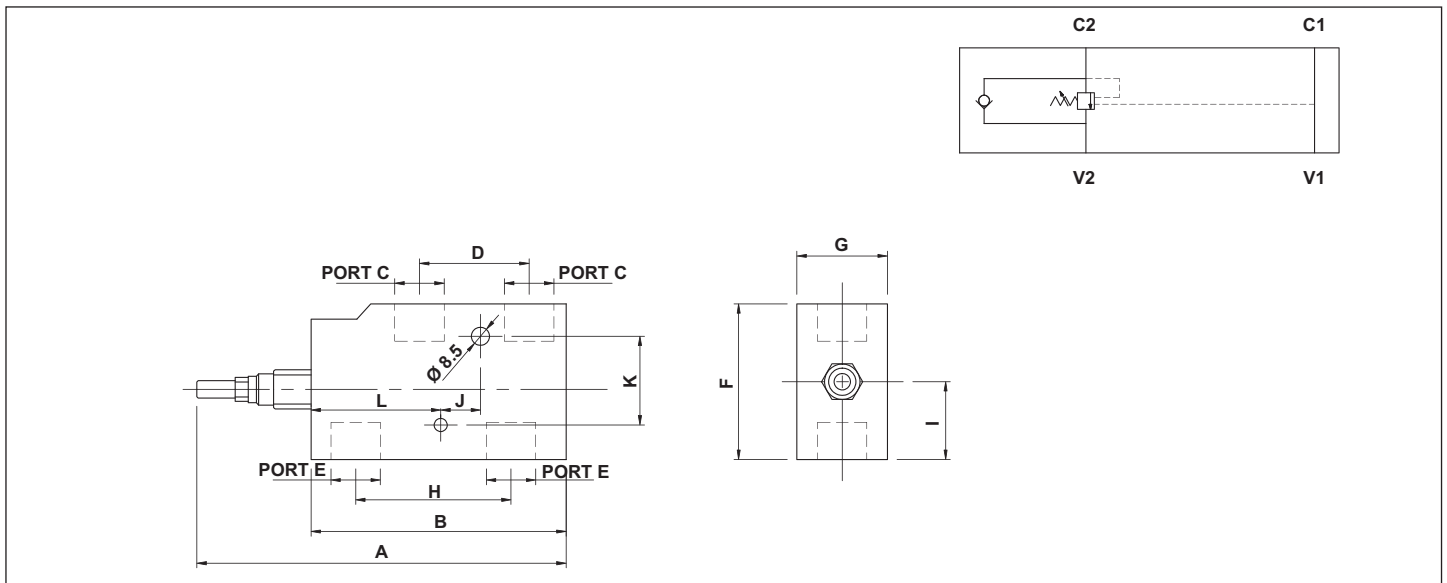
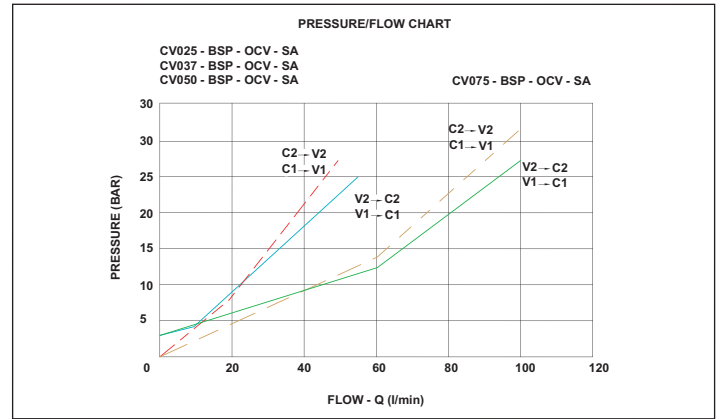
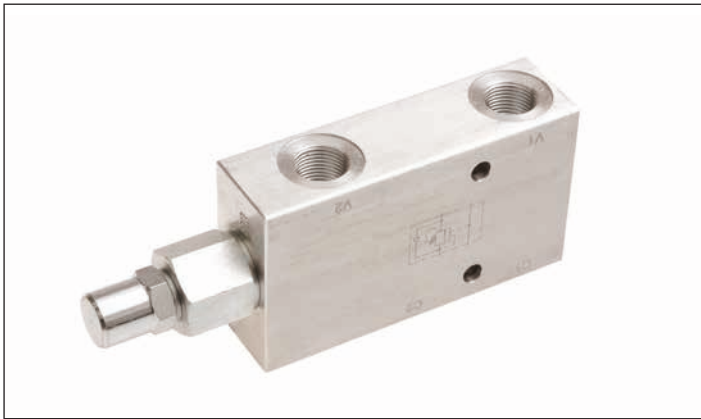
MATERIAL ; STEEL - ZINC PLATED STEEL OR EQUIVALENT

APPLICATION ; THESE VALVES ARE USED TO CONTROL THE ACTUATORS MOVEMENTS AND CONTROL THE DESCENT OF A LOAD

PORTS V1 & V2 ARE CONNECTED TO DIRECTIONAL CONTROL VALVE FEED AND RETURN.

PORTS C1 & C2 CONNECT TO THE CYLINDER PORTS TO BE CONTROLLED.

SINGLE ACTING OVERCENTRE VALVES



CHECK VALVE CV	PORT SIZE 025	THREAD BSP	OVERCENTRE VALVE OCV	SINGLE ACTING SA
-------------------	------------------	---------------	-------------------------	---------------------

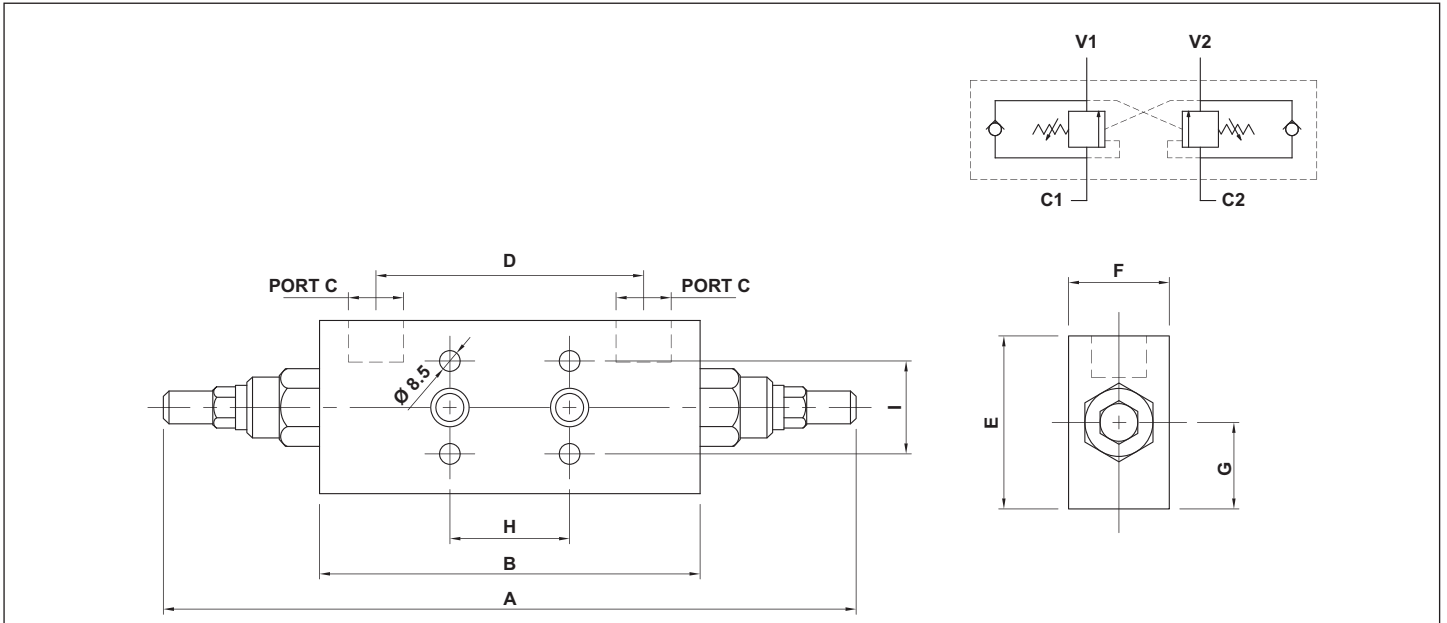
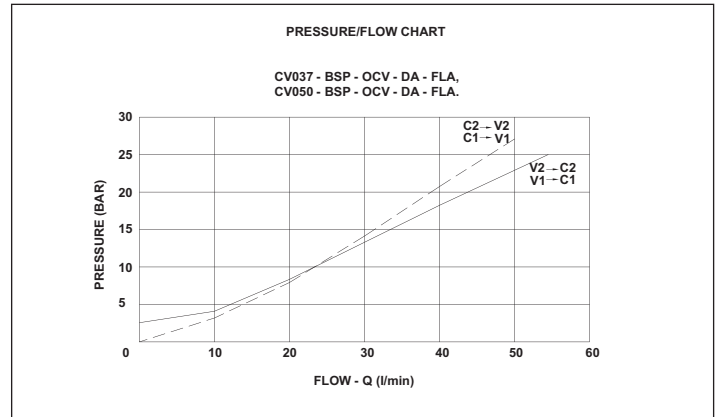
PART NUMBER	L/MIN	MAX PRESSURE BAR	PILOT RATIO	A	B	(BSP) PORT C	D	(BSP) PORT E	F	G	H	I	J	K	L
CV025-BSP-OCV-SA	20	350	1:4.5	149	100	1/4"	30	1/4"	60	30	60	30	10	44	55
CV037-BSP-OCV-SA	40	350	1:4.5	149	100	3/8"	30	3/8"	60	30	60	30	10	44	55
CV050-BSP-OCV-SA	60	350	1:4.5	149	100	1/2"	36	1/2"	60	30	65	30	10	44	57.5
CV075-BSP-OCV-SA	95	350	1:5.5	187	127	3/4"	46	3/4"	80	35	85	40	10	44	75

MATERIAL ; STEEL - ZINC PLATED STEEL OR EQUIVALENT

APPLICATION ; THESE VALVES ARE USED TO CONTROL THE ACTUATORS MOVEMENTS AND CONTROL THE DESCENT OF A LOAD
PORTS V1 & V2 ARE CONNECTED TO DIRECTIONAL CONTROL VALVE FEED AND RETURN.

PORTS C 1 CONNECTS TO THE FREE FLOW SIDE OF THE CYLINDER.
PORT C 2 CONNECTS TO THE SIDE THAT NEEDS TO BE CONTROLLED.

DOUBLE ACTING OVERCENTRE VALVES FLANGE MOUNTED



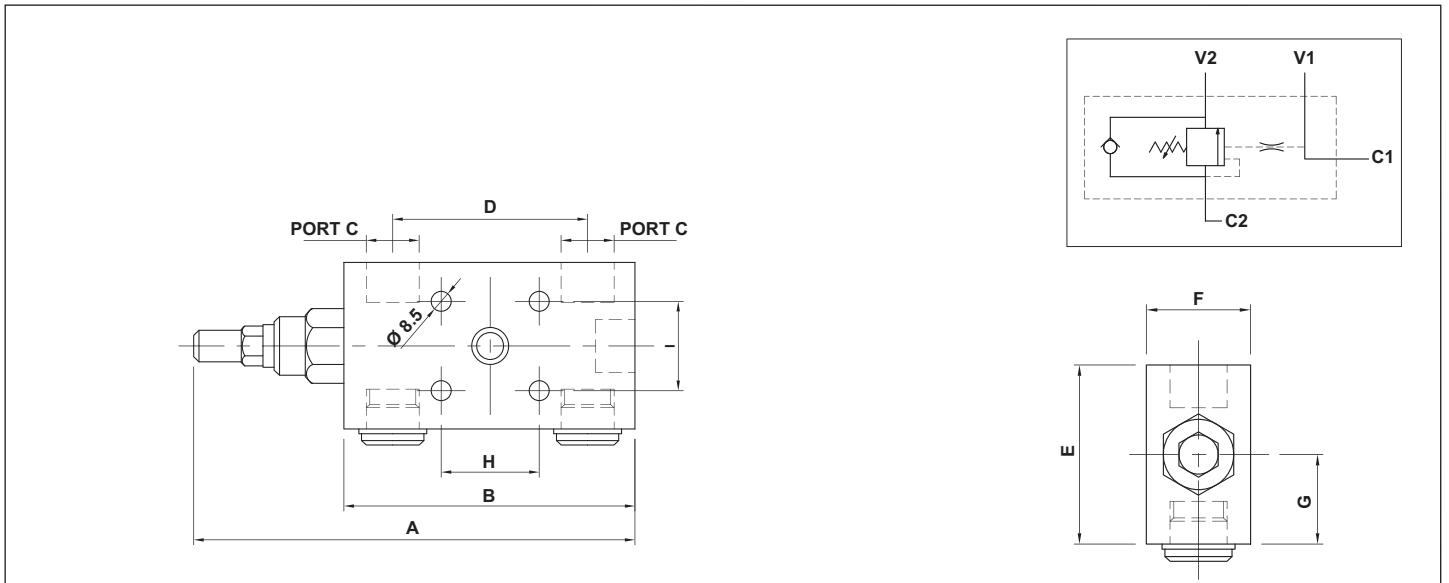
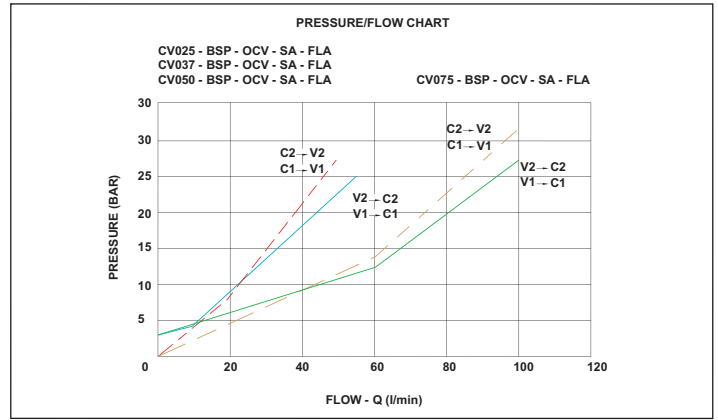
CHECK VALVE CV	PORT SIZE 025	THREAD BSP	OVERCENTRE VALVE OCV	DOUBLE ACTING DA	FLANGE MOUNTED FLA
-------------------	------------------	---------------	-------------------------	---------------------	-----------------------

PART NUMBER	L/MIN	MAX PRESSURE BAR	PILOT RATIO	A	B	(BSP) PORT C	D	E	F	G	H	I
CV037-BSP-OCV-DA-FLA	40	350	1:4.5	248	150	3/8"	110	60	30	30	48	40
CV050-BSP-OCV-DA-FLA	60	350	1:4.5	248	150	1/2"	110	60	30	30	48	40

MATERIAL; STEEL - ZINC PLATED STEEL OR EQUIVALENT

APPLICATION; THESE VALVES ARE USED TO CONTROL THE ACTUATORS MOVEMENTS AND CONTROL THE DESCENT OF A LOAD
PORTS C ARE CONNECTED TO DIRECTIONAL CONTROL VALVE FEED AND RETURN.

SINGLE ACTING OVERCENTRE VALVES FLANGE MOUNTED



CHECK VALVE CV	PORT SIZE 037	THREAD BSP	OVERCENTRE VALVE OCV	SINGLE ACTING SA	FLANGE MOUNTED FLA
-------------------	------------------	---------------	-------------------------	---------------------	-----------------------

PART NUMBER	L/MIN	MAX PRESSURE BAR	PILOT RATIO	A	B	(BSP) PORT C	D	E	F	G	H	I
CV037-BSP-OCV-SA-FLA	40	350	1 : 4.5	149	100	3/8"	60	60	30	30	30	30
CV050-BSP-OCV-SA-FLA	60	350	1 : 4.5	149	100	1/2"	65	60	30	30	30	30

MATERIAL; STEEL - ZINC PLATED STEEL OR EQUIVALENT

APPLICATION; THESE VALVES ARE USED TO CONTROL THE ACTUATORS MOVEMENTS AND CONTROL THE DESCENT OF A LOAD
 PORTS C ARE CONNECTED TO DIRECTIONAL CONTROL VALVE FEED AND RETURN.