

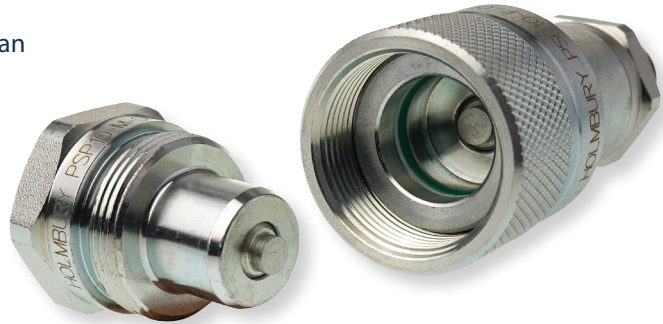
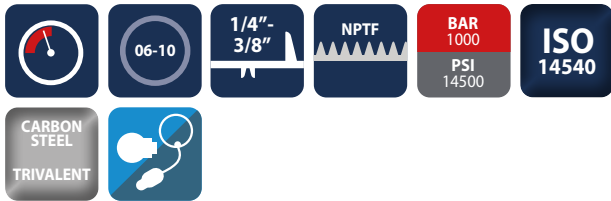


High pressure screw to connect poppet and ball couplings made to the ISO 14540 Standard

PSP, PSB Series

INTRODUCTION

Holmbury's PSP Series screw to connect couplings are designed primarily for high pressure applications. They can be connected under low residual system pressures. The couplings are available with ball or poppet style valves.



CONSTRUCTION

- Carbon steel with trivalent plating
- Fitted with Polyurethane and Nitrile seals

FEATURES

- Screw to connect design eliminates brinelling
- PSP offers poppet style valve
- PSB offers ball style valve
- Can be connected with low residual pressure in the hydraulic circuit
- Bidirectional flow

ACCESSORIES

- Dust caps, plugs, plastic couplings and seal kits are available for the PSP and PSB Series

SPECIFICATIONS

- Operating temperatures (With Nitrile and Polyurethane seals): -30°C (-22°F) to 106°C (223°F)

APPLICATIONS

- High pressure applications (Up to 720 bar (10440 psi) for PSB and 1000 bar (14500 psi) for PSP)
- General industrial, construction plant, mobile equipment, demolition and agricultural industries
- Hydraulic jacks
- Torque wrenches

PSP, PSB PERFORMANCE CHARACTERISTICS

Body Size	PSB06	PSB10	PSP06	PSP10
	Pressure in bar - Flow in LPM			
	Pressure in PSI - Flow in GPM			
Maximum working pressure (Coupled)	720 10440	720 10440	1000 14500	1000 14500
Burst pressure (Coupled)	2160 31320	2160 31320	2160 31320	2160 31320
Burst pressure (Male)	1440 20880	1440 20880	2160 31320	2160 31320
Burst pressure (Female)	1400 20300	1400 20300	2100 30450	2100 30450
Rated flow	3 0.8	23 6.1	3 0.8	23 6.1

CAPS/PLUGS ACCESSORIES

FEMALE PLUGS	MALE CAPS
PS06-F-PLUG	PS06-M-CAP
PS10-F-PLUG	PS10-M-CAP

Standard material is steel

DUAL CAP/PLUG

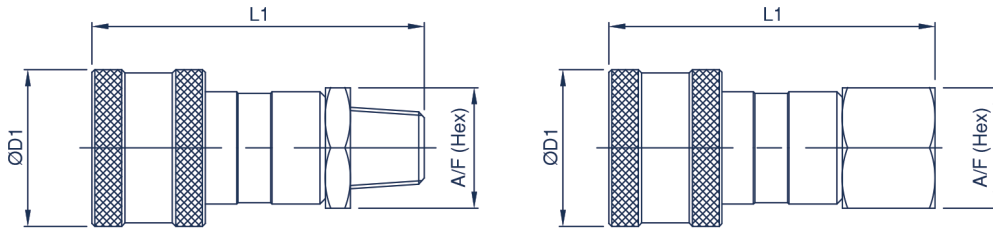
PS06-CAP/PLUG
PS10-CAP/PLUG

Available in red or black, material is PVC

SEAL KITS

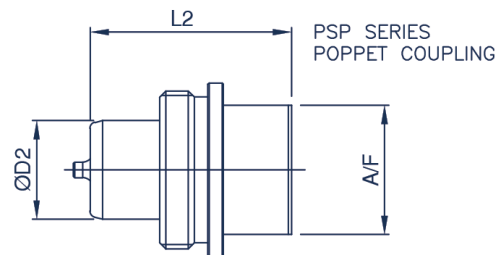
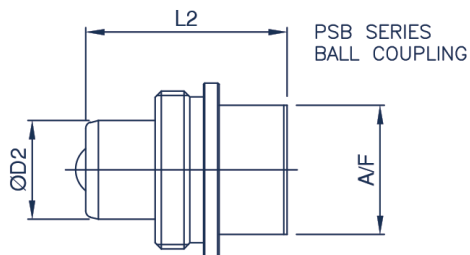
PS06-F-SEAL KIT
PS10-F-SEAL KIT

PSP, PSB Series



PSP, PSB FEMALE COUPLING

Body Size	Part Number	Thread Size	D1		L1		A/F	
			mm	inch	mm	inch	mm	inch
06 (1/4)	PSB06-F-04N	1/4 NPTF	28.6	1.13	59.7	2.35	22.0	0.87
	PSB06-F-04NM	1/4 NPTF	28.6	1.13	60.8	2.39	22.0	0.87
	PSP06-F-04N	1/4 NPTF	28.6	1.13	58.6	2.31	22.0	0.87
	PSP06-F-04NM	1/4 NPTF	28.6	1.13	59.7	2.35	22.0	0.87
10 (3/8)	PSB10-F-06N	3/8 NPTF	35.0	1.38	73.5	2.89	25.0	0.98
	PSB10-F-06NM	3/8 NPTF	35.0	1.38	73.5	2.89	25.0	0.98
	PSP10-F-06N	3/8 NPTF	35.0	1.38	73.5	2.89	25.0	0.98
	PSP10-F-06NM	3/8 NPTF	35.0	1.38	73.5	2.89	25.0	0.98



PSP, PSB MALE COUPLING

Body Size	Part Number	Thread Size	D2		L2		A/F	
			mm	inch	mm	inch	mm	inch
06 (1/4)	PSB06-M-04N	1/4 NPTF	15.8	0.62	32.5	1.28	19.0	0.75
	PSP06-M-04N	1/4 NPTF	15.8	0.62	32.5	1.28	19.0	0.75
10 (3/8)	PSB10-M-06N	3/8 NPTF	19.0	0.75	35.0	1.38	32.0	1.26
	PSP10-M-06N	3/8 NPTF	19.0	0.75	35.0	1.38	32.0	1.26

For all other configurations or thread types please contact the sales office.