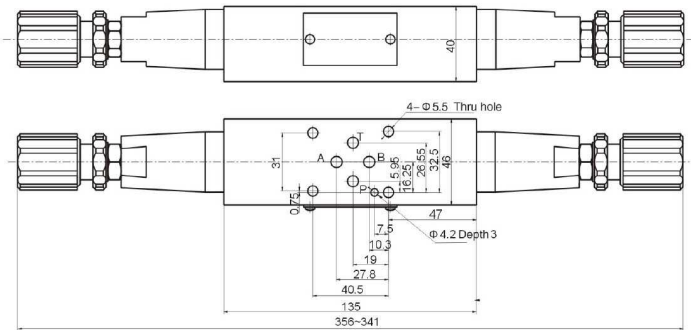
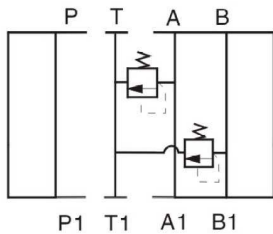


Solenoid valves

Modular blocks for NG6

NG6 Pressure relief valve in A and B

Page: 1/1



Flow Rate 60 l/min
Max Pressure 315 bar
Adjustment knob
Cast iron body

| Part n° | Size | Max. flow (l/min) | Max. Press. (bar) | Reg. rate (bar) |
|----------------|------|-------------------|-------------------|-----------------|
| LPKV-6-D-100 H | NG-6 | 60 | 315 | 0-100 |
| LPKV-6-D-315 H | NG-6 | 60 | 315 | 0-315 |