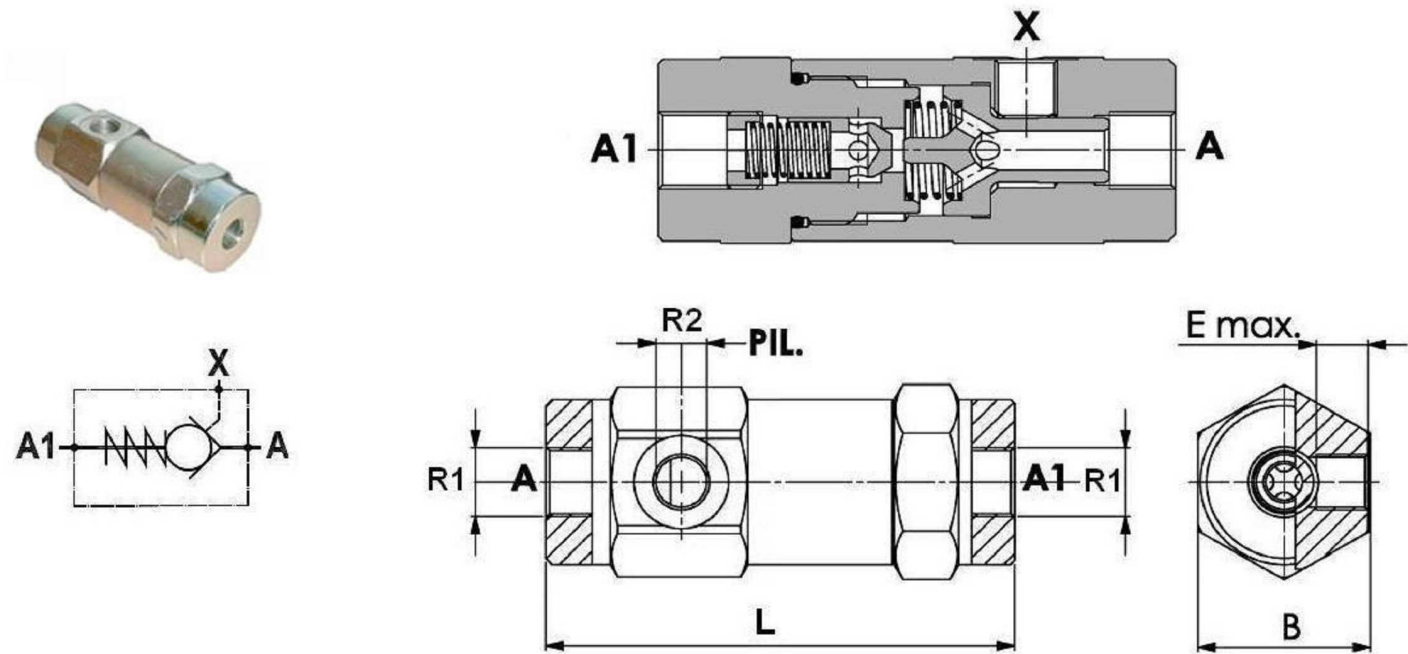


Hydraulic valves
Check valves
Single pilot operated check valve



Material Body in Steel
Cracking Pressure 0,5 bar

Part nº	R1	R2	Max. flow (l/min)	Max. Press. (bar)	Pilot ratio	L	B	E
VT002004	1/4" BSP	1/4" BSP	12	350	1 : 9	103	36	11
VT002006	3/8" BSP	1/4" BSP	30	310	1 : 6	109	40	11,5
VT002008	1/2" BSP	1/4" BSP	45	310	1 : 4.5	120	42	11