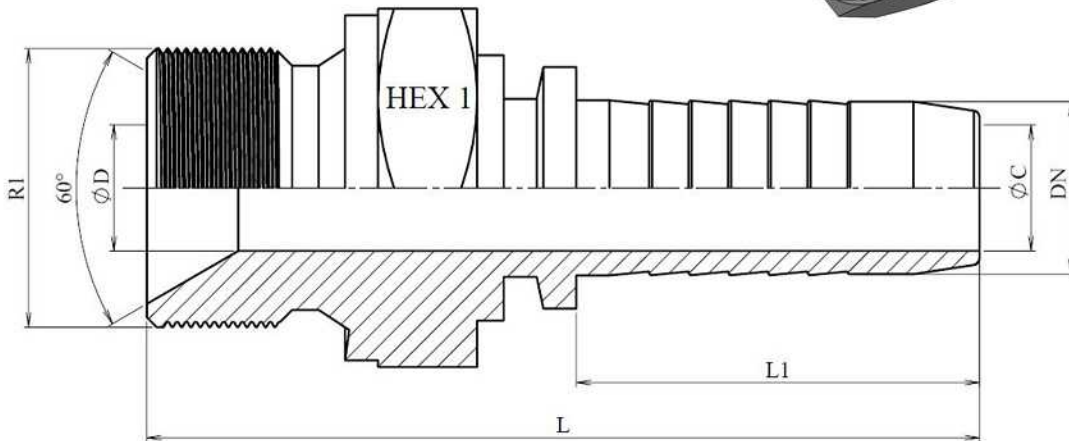
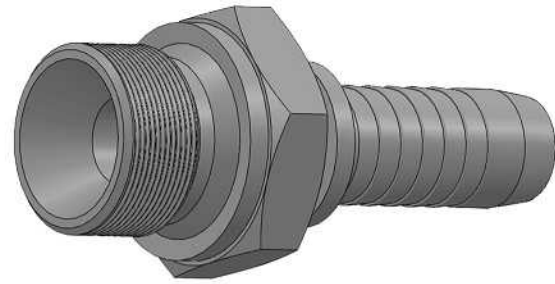


**BSP Male-parallel 60° cone**

Stainless Steel AISI 316-L

**1/1**

Part n°	DN	R1	L	L1	HEX 1	ØC	ØD
<b>841120203</b>	3/16"	1/8" BSP	42,5	24	14	3	2
<b>841120204</b>	1/4"	1/8" BSP	47	28	14	4	4
<b>841120403</b>	3/16"	1/4" BSP	47,5	24	19	3	4
<b>841120404</b>	1/4"	1/4" BSP	52	28	19	4	6
<b>841120405</b>	5/16"	1/4" BSP	53	28	19	5,5	5,5
<b>841120406</b>	3/8"	1/4" BSP	54	29,5	19	7	7
<b>841120604</b>	1/4"	3/8" BSP	55,5	28	22	4	8
<b>841120605</b>	5/16"	3/8" BSP	55,8	28	22	5,5	8
<b>841120606</b>	3/8"	3/8" BSP	57,5	29,5	22	7	7
<b>841120608</b>	1/2"	3/8" BSP	57,5	29,5	22	9,5	9,5
<b>841120806</b>	3/8"	1/2" BSP	61,5	29,5	27	7	9,5
<b>841120808</b>	1/2"	1/2" BSP	63	30,5	27	9,5	9,5
<b>841121010</b>	5/8"	5/8" BSP	68,3	34	30	12	12
<b>841121210</b>	5/8"	3/4" BSP	68,3	34	32	12	15
<b>841121212</b>	3/4"	3/4" BSP	74,5	39	32	15	15
<b>841121612</b>	3/4"	1" BSP	79,5	39	41	15	19
<b>841121616</b>	1"	1" BSP	87,5	47	41	19	22
<b>841122016</b>	1"	1"1/4 BSP	91	47	50	19	26
<b>841121620</b>	1"1/4	1" BSP	97	45,5	41	26	26
<b>841122020</b>	1"1/4	1"1/4 BSP	100	54,5	50	26	26
<b>841122420</b>	1"1/4	1"1/2 BSP	103,5	54,5	55	26	32
<b>841122424</b>	1"1/2	1"1/2 BSP	107,5	58	55	32	32
<b>841122432</b>	2"	1" 1/2 BSP	121	72	60	44	32
<b>841123232</b>	2"	2" BSP	124	72	65	44	44
<b>841124040</b>	2" 1/2	2" 1/2 BSP	135	89	85	55	55