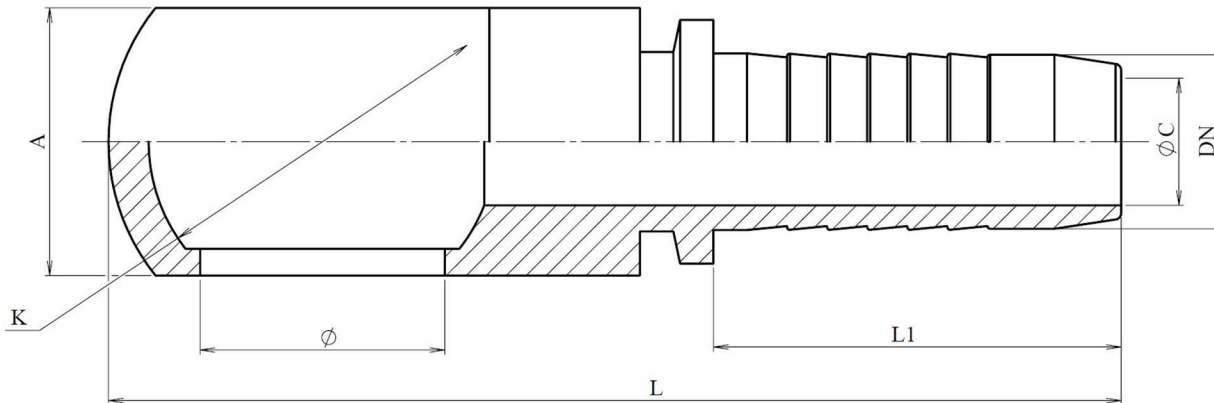
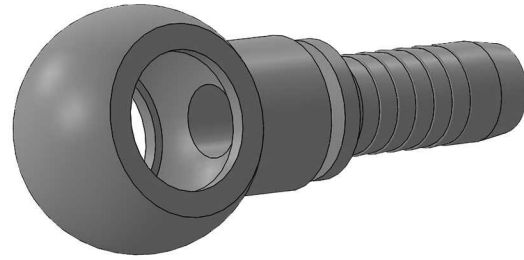


Banjo Metric

Stainless Steel AISI 316-L



Part n°	DN	Ø	L	L1	ØC	A	K
841161003	3/16"	M10x1	53,5	24	3	10	17
841161004	1/4"	M10x1	58,3	28	4	12	17
841161005	5/16"	M10x1	58,6	28	5,5	10	17
841161204	1/4"	M12x1.5	67,2	28	4	12	24
841161404	1/4"	M14x1.5	37,2	28	4	14	24
841161406	3/8"	M14x1.5	68	29,5	7	16	24
841161605	5/16"	M16x1.5	68,1	28	5,5	17	28
841161606	3/8"	M16x1.5	73,8	29,5	7	17	28
841161806	3/8"	M18x1.5	74,1	29,5	7	20	32
841161808	1/2"	M18x1.5	75,8	30,5	9,5	20	32
841162008	1/2"	M20x1.5	83,5	30,5	9,5	23,5	36
841162208	1/2"	M22x1.5	83,5	30,5	9,5	23,5	36
841162612	3/4"	M26x1.5	105,5	39	15	29	45