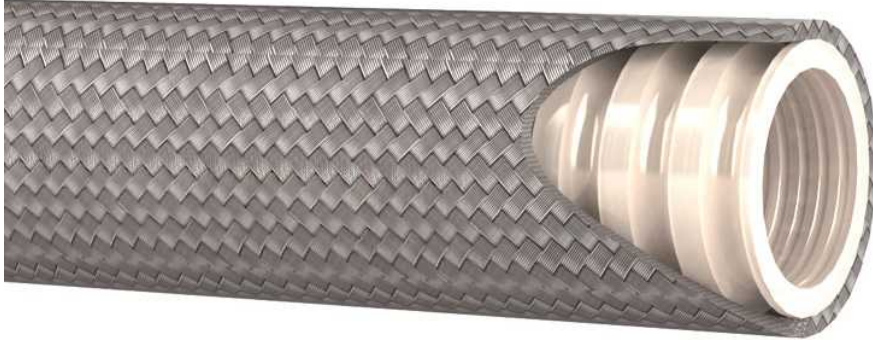


PTFE hoses TrAle
Convuluted PTFE

Convuluted PTFE 1 braid

Page: 1/1

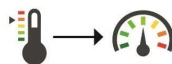


Composition: · Inner tube: convoluted tube in PTFE, resistant to fire, chemically inert. Suitable for food use, according to FDA norm.
· Reinforcement: stainless steel AISI 304 braid.

Working temperature: From -70° C to +260° C.

Part n°	DN	Ø int min.	Ø int max.	Ø Out Min	Ø Out Max	Working Pressure (bar)	Working pressure (psi)	Burst pressure (bar)	Burst pressure (psi)	Bending radius (mm)	Weight (kg/m)
M292006	1/4"	5.95	6.45	9,14	9,65	135	2.494	405	5.874	18	0.15
M292009	3/8"	10	11	14,7	16,2	125	1.740	375	5.436	20	0.21
M292013	1/2"	13	14	18	19,7	110	1.595	330	4.785	25	0.27
M292016	5/8"	16	17	21,5	23	80	1.160	240	3.480	50	0.32
M292020	3/4"	19,5	20,7	25	27,5	70	1.015	210	3.045	65	0.39
M292025	1"	25,4	26,8	32	34,3	50	725	150	2.175	90	0.55
M292032	1" 1/4	31,5	33	38,5	41	48	696	144	2.080	125	0.74
M292038	1" 1/2	38	40	44,5	48	43	623	129	1.864	145	0.86
M292050	2"	50,5	52,7	57	62	34	493	69	1.000	180	1.18

Temperature: 20° C
The acceptable value for use in vacuum -0.95 bar



-60°C	95%
130°C	100%
150°C	80%
180°C	50%
200°C	30%
220°C	10%