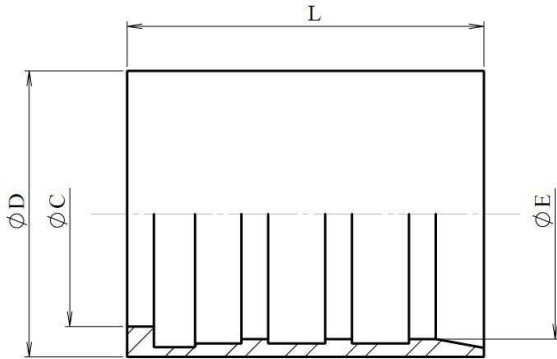


Ferrules for convoluted PTFE

Stainless Steel AISI 316-L



Part n°	DN	L	ØC	ØD	ØE
810410400	1/4"	30	11,2	16	12,5
810410500	5/16"	30	12,8	17	13
810410600	3/8"	30	16	22	18,3
810410800	1/2"	32	18,6	25	21
810411000	5/8"	36	22	29	24,7
810411201	3/4"	40	25,2	32	28
810411600	1"	50	33	40	34,8
810412000	1"1/4	59	39,5	46	42
810412400	1"1/2	63	44,3	55	49
810413200	2"	70	60	69	63
810414000	2"1/2	70	68	80	74