

PTFE hoses TrAle

Smooth PTFE

FHL (light) / Smooth PTFE SAE100 R14

Page: 1/1



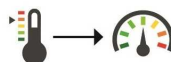
Composition: · Inner tube: smooth tube in PTFE. Fine thickness. Resistant to fire, chemically inert. Suitable for food use according to FDA norm.
· Reinforcement: stainless steel AISI 304L braid.

Working temperature: From -70° C to +260° C.

Part n°	DN	Ø in	Ø out	Working Pressure (bar)	Working pressure (psi)	Burst pressure (bar)	Burst pressure (psi)	Bending radius (mm)	Weight (kg/m)
M290003	1/8"	3,9	5,8	270	3.916	1.080	15.664	25	0,055
M290005	3/16"	5,1	7,4	200	2.900	800	11.600	35	0,070
M290006	1/4"	6,35	9	175	2.537	700	10.150	45	0,090
M290008	5/16"	7.9	10,8	150	2.175	600	8.700	50	0.084
M290009	3/8"	9.5	12,4	135	1.957	540	7.830	55	0.097
M290013	1/2"	12.7	15,7	120	1.740	480	6.960	70	0.014
M290016	5/8"	15,9	19,1	100	1.450	400	5.800	130	0,265
M290020	3/4"	19	22,2	90	1.305	360	5.220	190	0,320
M290025	1"	25,4	29,3	65	942	260	3.770	270	0,460

Temperature: 20° C / SAE 100 R14

Vacuum pressure: 28 inHg (1/4" - 1/2") - 14 inHg (5/8 - 3/4") - 8 inHg (1")



-60°C	95%
130°C	100%
150°C	80%
180°C	50%
200°C	30%
220°C	10%