

PTFE hoses TrAle

Smooth PTFE

## FHM 2 Braids

Page: 1/1

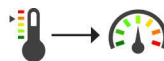


**Composition:** ·Inner tube: smooth tube in PTFE. Normal thickness. Resistant to fire, chemically inert. Suitable for food use according to FDA norm.  
·Reinforcement: two braids of stainless steel AISI 304.

**Working temperature:** From -70° C to +260° C.

Part n°	DN	Ø in	Ø out	Working Pressure (bar)	Working pressure (psi)	Burst pressure (bar)	Burst pressure (psi)	Bending radius (mm)	Weight (kg/m)
<b>M2901206</b>	1/4"	6,35	10,5	365	5.292,5	1.100	15.950	45	0,174
<b>M2901208</b>	5/16"	7,9	12,7	300	4.350	900	13.050	50	0,230
<b>M2901209</b>	3/8"	9,5	14,3	285	4.132,5	850	12.325	55	0,268
<b>M2901213</b>	1/2"	12,7	17,6	280	4.060	750	10.875	70	0,372
<b>M2901216</b>	5/8"	15,9	21	235	3.407,5	700	10.150	130	0,507
<b>M2901219</b>	3/4"	19	24,1	200	2.900	600	8.700	190	0,609
<b>M2901225</b>	1"	25,4	31,5	150	2.175	450	6.525	270	0,813

Temperature: 20° C



-60°C	95%
20°C	100%
100°C	75%
150°C	50%
200°C	25%
250°C	10%