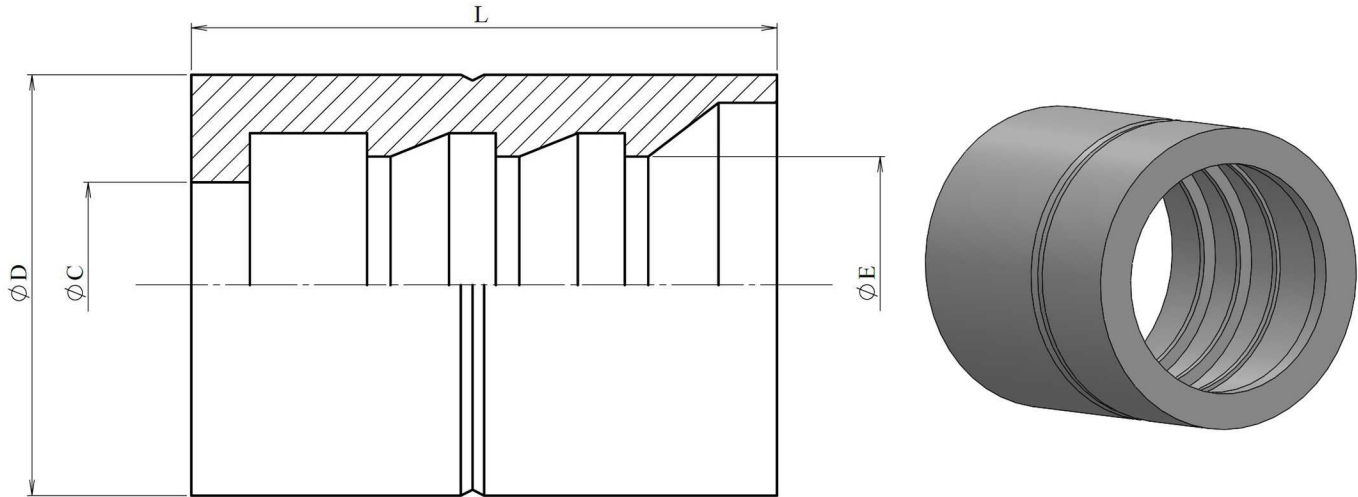


Standard series
Crimping ferrules
Ferrules R1A-1ST



Stainless Steel AISI 316-L

1/1



Part n°	DN	L	ØC	ØD	ØE
820030300	3/16"	25	8,8	18	11
820030400	1/4"	31	11,3	20	12,2
820030500	5/16"	31	13	21	13,5
820030600	3/8"	31	14,3	24	16,1
820030800	1/2"	35,5	19	28	19,5
820031000	5/8"	36	21,7	31	22,5
820031200	3/4"	42,5	25	35	26,3
820031600	1"	50,5	30,5	42	34,4
820032000	1"1/4	59	38	52	42,2
820032400	1"1/2	63	44,3	58	48,4
820033200	2"	70	57,4	71	62