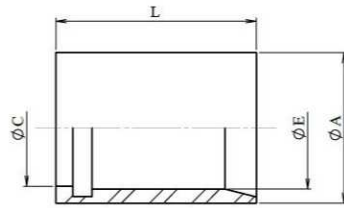


**Ferrules for Smooth PTFE SAE 100 R14 smooth surface**

Mild Steel



Part n°	DN	L	ØA	ØC	ØE
<b>280400400</b>	1/4"	30	15	10,7	11
<b>280400500</b>	5/16"	30	17	12,8	13,2
<b>280400600</b>	3/8"	30	18	14	14
<b>280400800</b>	1/2"	32	24	18,6	19,5
<b>280401000</b>	5/8"	30	28	21,5	22,5